



# Fog and Driving Lamps

Whether in the urban jungle, the early morning mist of a country road, autumn fog or off-road, superior lighting performance significantly enhances your driving safety.



# Contents

## Fog and Driving Lamps

Rallye 4000 LED .....	108
Rallye 4000 .....	109-111
Rallye 4000 Compact .....	112-113
Comet FF 450 .....	114
Comet FF 500 .....	115
Comet FF 550 .....	116
Comet 100 .....	117
Comet 200 .....	118
Comet 300 .....	119
FF 50 .....	120
FF 75 .....	121



# FOG AND DRIVING LAMPS - INNOVATIVE LIGHTING TECHNOLOGY

HELLA Fog and Driving Lamps provide superior performance - both in distance and evenness of illumination, for enhanced On and Off-road safety.

For decades, professional drivers have chosen the superior performance of HELLA driving lights to increase the range and distance of their forward vision at night and in adverse weather conditions.

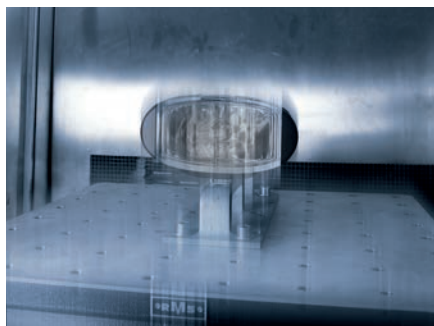
Driving for extended hours at night can be tiring. The use of good forward lighting has long been recognised as an effective approach to reduce driver fatigue and loss of concentration leading to dangerous situations for road users.

HELLA offers driving and fog lamps that suit even the most demanding applications, engineered to Original Equipment Manufacturer (OEM) standards and trusted by millions of motorists around the world.

The superior performance of HELLA auxiliary driving lamps is confirmed time and again in independent tests in major international automotive magazines.

## HELLA Quality Control

Before a new HELLA design is passed for production and sale, it has to pass stringent endurance tests. To ensure HELLA driving lights are fit for their purpose, tests are conducted with simulated real-life environments and driving conditions.



The following criteria must be passed before a new driving light is considered for production:

→ **Reliable performance in adverse conditions and extreme terrains.**

HELLA driving lamps are vigorously tested through mud and water spray tests simulating off-road and cross country driving.

→ **Harsh vibration and shock resistant.**

Vibration testing is performed with random as well as fixed frequencies, known to stress materials. This simulates unforgiving road conditions such as cobblestones and potholes.

→ **Optimal performance in freezing cold and fierce heat.**

The driving lamps are subjected to extreme temperature variations between -40 °C to +80 °C during testing to ensure they are capable in all weather extremes.

→ **Watertight even in extreme weather.**

The driving lamps are subjected to water spray at pressures of 4 bar to simulate driving through torrential rain.

## Tips For Safer Driving

- Ensure you always get a professional alignment after you change a headlamp, driving lamp, or bulb.
- Always use a bulb of the recommended wattage in your driving lamps. Using a higher wattage bulb than recommended will only minimally increase the light performance but will substantially increase the generated heat. This may cause damage to lamp components.
- Lights converted to Xenon discharge systems that are not designed for this technology is not recommended and can be illegal in certain on-road applications.
- If you are 'blowing' bulbs regularly, and/or your lights are not as bright as they used to be, try fitting a relay. A relay will both protect your switch and electrical system, as well as assist in applying the design voltage to the bulb.



## ELIVER The Online Comparison Tool

Eliver - our unique comparison tool helps you find the best possible fog or driving lamp for your application.

With Eliver, you can easily compare our best lamps online and get a realistic idea of performance.

**Get the right lights for your everyday work.**



Scan the QR Code for the Eliver home page. QR Code reader needed.

[www.hella.com/eliver](http://www.hella.com/eliver)



# SAFER DRIVING WITH HELLA'S ADVANCED TECHNOLOGY



“The use of good forward lighting has long been recognised as an effective approach to reduce driver fatigue”

## **Lights with Parabolic Reflector Systems**

These lights are designed with a reflector in the mathematically defined shape of a paraboloid. The reflector captures the luminous flux emitted by the bulb and projects this forward as an almost parallel light beam.

The specific light distribution is produced by optical lenses and prisms in the profiled cover lens which precisely directs the light to the area to be illuminated. Good optic design produces an even illumination whereas a spotty appearance is the result of poorly designed optics.

Efficient headlamps with parabolic reflector systems require a large reflector in order to capture the maximum luminous flux from the bulb.

## **Lights with Free-Form (FF) Reflector Technology**

Lights incorporating Free-Form (FF) technology are based on complex computer simulations. Over 50,000 (individual surfaces of the reflector are calculated and formed to precisely reflect the light to the road in front of the vehicle. The outer cover lens contains minimal optic elements.

A well designed headlight, based on Free-Form (FF) technology, produces an evenly lit area in front of the vehicle which significantly contributes to safer driving.

## **Micro DE**

The functional principle of a DE (Diaxial Ellipsoid) lamp is similar to that of a slide projector. An ellipsoid Free-Form (FF) reflector directs the light to a focused glass lens which bundles and projects it onto the road. A shield positioned between the reflector and the lens provide a very sharp cut-off resulting in a concentrated light beam with defined edges ensuring a smooth light distribution with very little stray light. DE technology allows smaller dimensions with a higher luminance compared to a parabolic lamp.



**Pencil Beam**

The pencil beam driving light is designed for maximum long-range illumination, providing improved visibility of objects and traffic situations at great distance. This beam type is recommended for off-road vehicles where objects at a far distance must be recognised early to give the driver time to decide on a course of action.

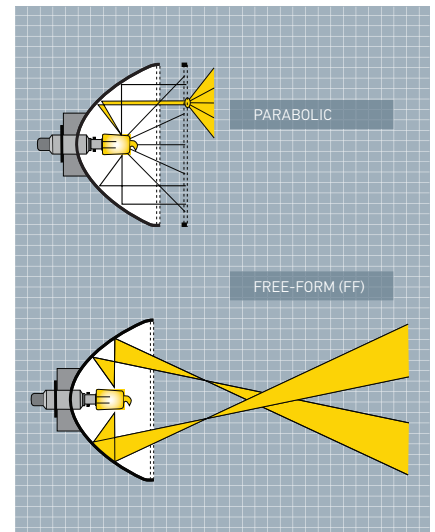
**Spread Beam**

The spread beam driving light provides effective illumination of both the area immediately in front of the vehicle and some distance ahead. This beam type is particularly suitable for road vehicles (e.g. trucks and buses) where fatigue-free driving is more important than recognising objects at a far distance.

**HELLA Fog Lamps**

Fog, rain or snow can reflect the light of standard driving lights into the driver's vision creating a dangerous glare which makes it difficult to recognise hidden hazards.

HELLA Fog Lamps are equipped with specially designed reflectors, which evenly illuminate the width of the road, providing you with a wide path of light for clearer visibility in close range to the vehicle. Particularly suitable for any vehicle driving through humid or moist areas where fog, rain or snow is common.



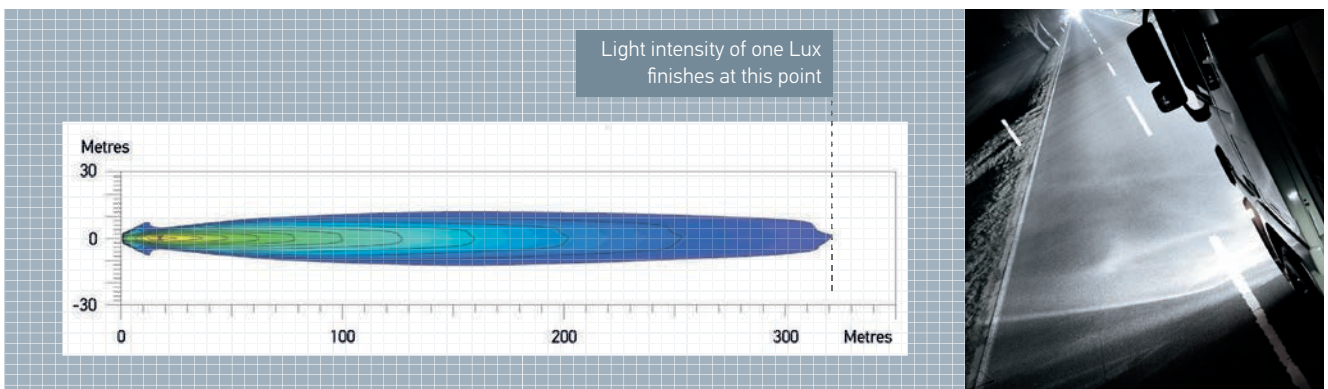
Lighting differences of the Parabolic and Free-Form (FF) lamps

## MEASURING DISTANCE IN LIGHT

Isolux charts represent the beam pattern and the distance illuminated on a flat road surface using a single lamp.

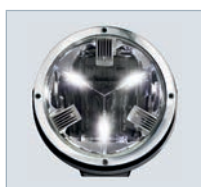
The colour shades represent the distance in metres from the lamp. The dark blue shade indicates an illumination level of one Lux (320 metres in the shown diagram).

One Lux represents the intensity of the light of a full moon (under clear atmospheric conditions) or just sufficient light by which to read a newspaper.

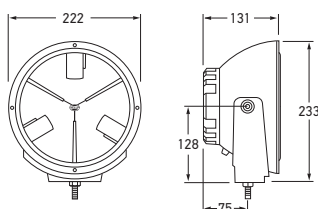


## LED Luminator Spread Beam Driving Lamp

Equipped with innovative triple high-boost reflectors and state-of-the-art LED technology for all lighting functions, Luminator LED driving lamps deliver long lasting and extremely powerful light output, achieving an intense and consistent long-range illumination that is very similar to daylight, without harsh contrasts. Complete with clear cover P/N 8141.

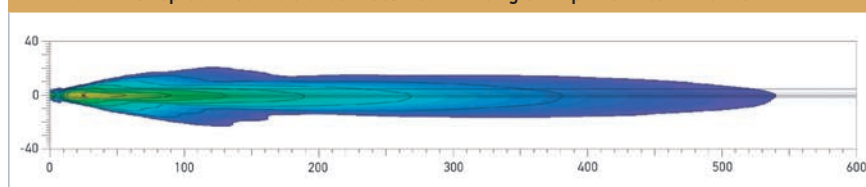


Front view showing position lamp

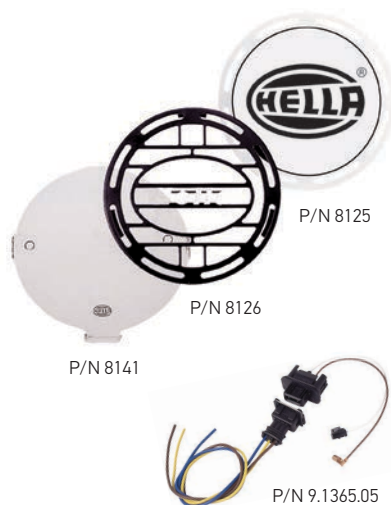


Part Number	1389	SPREAD BEAM
Mounting	Upright or pendant.	
Voltage	Multivolt™ for optimum brightness at input voltages from 9 to 33 volts.	
Power Consumption	Driving lamp: 30W Position lamp: 1W	
Protection	IP 5K9K (Protection against dust and high-pressure water jets). Not suitable for submersion	
Compliance	(E) 3161	
Spare Part	9.1389.01	Driving lamp lens, reflector and LED light source.

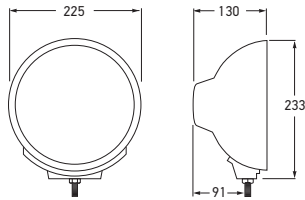
### LED Luminator Spread Beam distance. Recorded with single lamp. Distance in metres.



## Rallye 4000 Accessories



Part Number	8125	PROTECTIVE COVER
	8141	CLEAR PROTECTIVE COVER
	8126	PROTECTIVE GRILLE
Spare Parts	9.1165.01 9.1365.01 9.1366.01 9.1366.02 9.1365.05 9.1366C.01BL 9.1389.01 9.1365.06 9.1365.07 9.1366C.07	Fog lamp insert Pencil beam insert Spread beam insert (optic lens) Spread beam insert (clear lens) Wiring loom Spread beam insert (blue lens) LED lamp lens and reflector Knurled screw set (2) Black lens retaining rim Chrome lens retaining rim

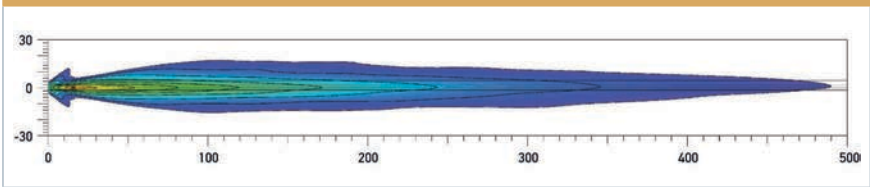


Rallye 4000 Spread Beam Driving Lamp

The Rallye 4000 spread beam features a sturdy zinc die-cast metal body and bracket for excellent strength and vibration resistance. The bracket has a large contact surface making the lamp stable in rough conditions. Suitable for professional, commercial and off-road drivers. Complete with protective cover P/N 8125 and allen keys.

Part Number	1366	SPREAD BEAM
Mounting	Upright or pendant.	
Power Consumption	Driving lamp: 55W Position lamp: 5W	
Bulbs to Suit	Driving lamp: 12V C1255 Position lamp: W125	24V C2470 W245
Spare Part	9.1366.02	Spread beam insert (clear lens)
Compliance	(E) 44484	

Rallye 4000 Spread Beam distance. Recorded with single lamp. Distance in metres.

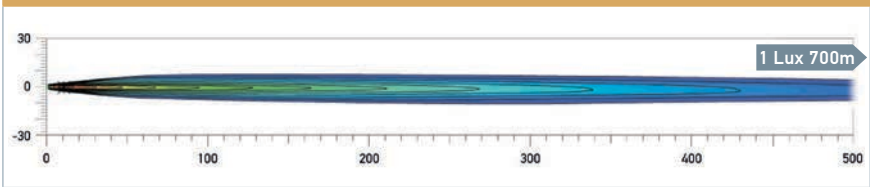


FOG AND DRIVING



Part Number	1365	PENCIL BEAM
Mounting	Upright or pendant.	
Power Consumption	55W	
Bulbs to Suit	12V C1255 24V C2470	
Spare Part	9.1365.01	Pencil beam insert

Rallye 4000 Pencil Beam distance. Recorded with single lamp. Distance in metres. (100W Bulb)



Rallye 4000 Pencil Beam Driving Lamp

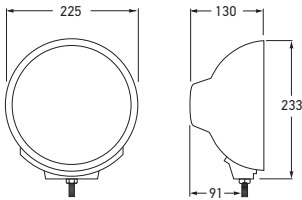
The Rallye 4000 pencil beam features a sturdy zinc die-cast metal body and bracket for excellent strength and vibration resistance. The lamp bracket has a large contact surface making the lamp stable in rough conditions. Suitable for professional, commercial and off-road drivers. Complete with protective cover P/N 8125 and allen keys.





Rallye 4000 Fog Lamp

The Rallye 4000 fog beam features a sturdy zinc die-cast metal body and bracket for excellent strength and vibration resistance. The bracket has a large contact surface making the lamp stable in rough conditions. Suitable for professional, commercial and off-road drivers. Complete with protective cover P/N 8125 and allen keys.



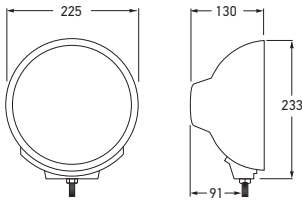
Part Number	1165	FOG BEAM
Mounting	Upright.	
Power Consumption	55W	
Bulbs to Suit	12V 24V	YC1255 YC2470
Spare Part	9.1165.01	Fog lamp insert
Compliance	E1 18245	



P/N 8125  
Protective cover

FOG AND DRIVING





Rallye 4000 Chrome Spread Beam Driving Lamp

The Rallye 4000 spread beam driving lamp features clear glass optics and chrome plated zinc die-cast metal housing. Complete with protective cover P/N 8125 and Allen keys.



Part Number	1366CHROME	SPREAD BEAM
Mounting	Upright.	
Power Consumption	Driving lamp: 55W Position lamp: 5W	
Bulbs to Suit	12V 24V Driving lamp: C1255CB C2470 Position lamp: W125 W245	
Spare Parts	9.1366.02 Spread beam insert 9.1366C.07 Chrome lens retaining rim	
Compliance	(E) 44484	

FOG AND DRIVING

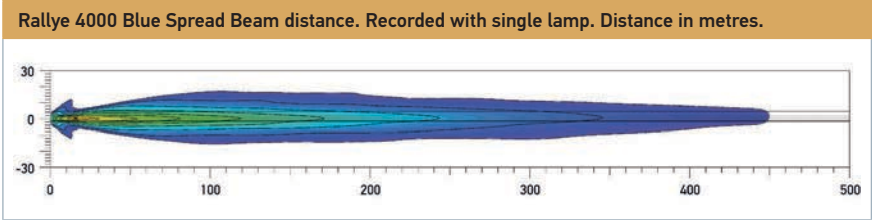


Rallye 4000 Chrome Spread Beam Driving Lamp

The Rallye 4000 spread beam driving lamp features blue clear glass optics and chrome plated zinc die-cast metal housing. Suitable for colourless bulbs only.



Part Number	1366C-BLUE	SPREAD BEAM
Mounting	Upright.	
Power Consumption	Driving lamp: 55W Position lamp: 5W	
Bulbs to Suit	12V 24V Driving lamp: C1255 C2470 Position lamp: W125 W245	
Spare Parts	9.1366C.01BL Spread beam insert with blue lens 9.1366C.07 Chrome lens retaining rim	
Compliance	(E) 44484	

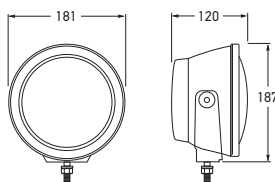


## LED Luminator Compact Spread Beam Driving Lamp

Compact Luminator LED lamp with high performance LEDs for long range illumination.

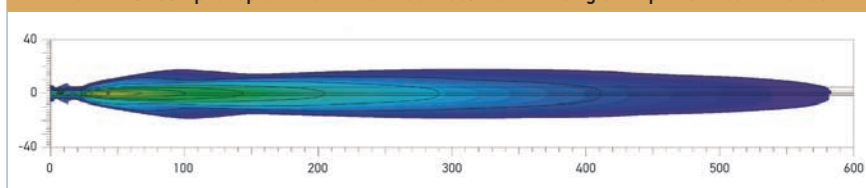


P/N 8120  
Protective cover



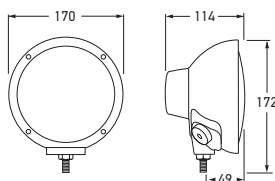
Part Number	1394	SPREAD BEAM
Mounting	Upright.	
Voltage	Multivolt™ for optimum brightness in 12 and 24 volt systems	
Power Consumption	Driving lamp:	11W
Compliance	(E1) 3738	
Spare Part	9.1394.01	Driving lamp lens, reflector and LED light source.

### LED Luminator Compact Spread Beam distance. Recorded with single lamp. Distance in metres.



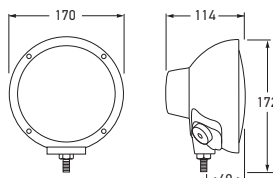
## Rallye 4000 Compact Fog Lamp

170mm compact version of the Rallye 4000 driving lamp, with clear Free-Form (FF) reflector lens design and sturdy zinc die-cast weatherproof black metal housing.



Part Number	1178	FOG BEAM
Mounting	Upright.	
Power Consumption	55W	
Bulbs to Suit	12V 24V	CA1255 CA2470
Spare Part	9.1178.01	Fog lamp insert
Compliance	(E1) 1901	



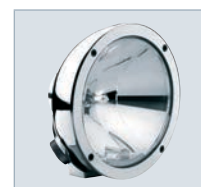
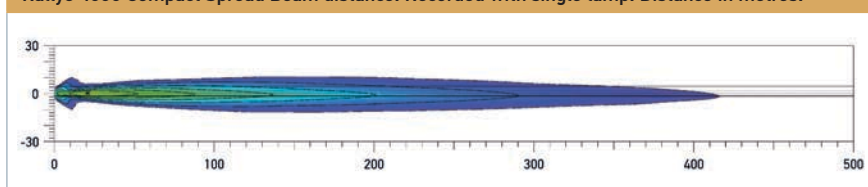


### Rallye 4000 Compact Spread Beam Driving Lamp

170mm compact version of the Rallye 4000 driving lamp, with clear Free-Form (FF) reflector lens design and sturdy zinc die-cast weatherproof metal housing.

Part Number	1378		SPREAD BEAM
	1378CHROME		
Mounting	Upright.		
Power Consumption	55W		
Bulbs to Suit	12V	C1255	
	24V	C2470	
Spare Part	9.1378.01	Spread beam insert	
Compliance	(E) 1901		

Rallye 4000 Compact Spread Beam distance. Recorded with single lamp. Distance in metres.

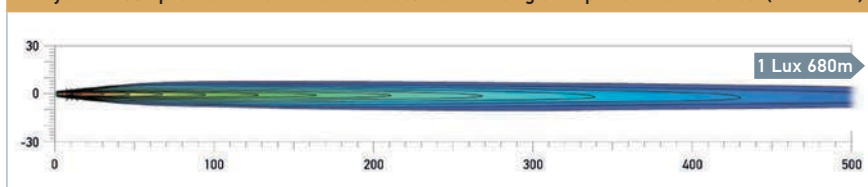


P/N 1378CHROME



Part Number	1380	PENCIL BEAM
Mounting	Upright.	
Power Consumption	55W	
Bulbs to Suit	12V	C1255
	24V	C2470
Spare Part	9.1380.01	Pencil beam Insert

Rallye 4000 Compact Pencil Beam distance. Recorded with single lamp. Distance in metres. (100W Bulb)



### Rallye 4000 Compact Pencil Beam Driving Lamp

Pencil beam driving lamp with clear glass optics. Chrome plated zinc die-cast weatherproof metal housing.



### Rallye 4000 Compact Accessories

Part Number	8155	CLEAR PROTECTIVE COVER
	8115	PROTECTIVE COVER
Spare Parts	9.1365.06	Knurled screw set (2)
	9.1378.01	Spread beam insert
	9.1380.01	Pencil beam Insert
	9.1394.01	LED lamp lens and reflector
	9.1178.01	Fog lamp insert

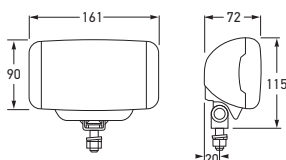


P/N 8155

P/N 8115

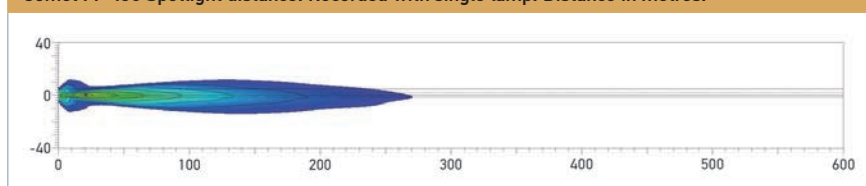
### Comet FF 450 Spread Beam Driving Lamp

H3 spotlight with black plastic housing.  
Complete with protective cover  
P/N 8XS 186 530-012.



Part Number	1324	SPREAD BEAM
Mounting	Upright or pendant.	
Power Consumption	55W	
Bulbs to Suit	12V 24V	YC1255 YC2470
Spare Part	9.1324.01	Driving lamp insert
Compliance	E1 3221	

Comet FF 450 Spotlight distance. Recorded with single lamp. Distance in metres.



### Comet FF 450 Fog Lamp

H3 fog lamp with black plastic housing.  
Complete with protective cover  
P/N 8XS 186 530-012.



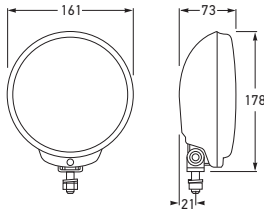
Part Number	1124	FOG BEAM
Mounting	Upright or pendant.	
Power Consumption	55W	
Bulbs to Suit	12V 24V	YC1255 YC2470
Spare Part	9.1124.01	Fog lamp insert
Compliance	E1 3221	

### Protective Covers



P/N 8156

Part Number	8XS 186 530-012	PROTECTIVE COVER
	8156	CLEAR PROTECTIVE COVER



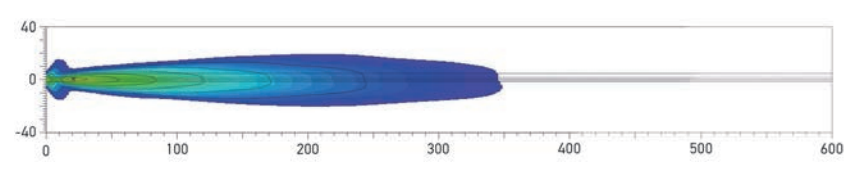
Comet FF 500 Spread Beam Driving Lamp

H3 spotlight with black plastic housing.  
Complete with protective cover  
P/N 8XS 186 531-012.



Part Number	1325	SPREAD BEAM
Mounting	Upright.	
Power Consumption	55W	
Bulbs to Suit	12V 24V	YC1255 YC2470
Spare Part	9.1325.01	Driving lamp insert
Compliance	(E1) 3222	

Comet FF 500 Spotlight distance. Recorded with single lamp. Distance in metres.



Comet FF 500 Fog Lamp

H3 fog lamp with black plastic housing.  
Complete with protective cover  
P/N 8XS 186 531-012.



Part Number	1125	FOG BEAM
Mounting	Upright.	
Power Consumption	55W	
Bulbs to Suit	12V 24V	YC1255 YC2470
Spare Part	9.1125.01	Fog lamp insert
Compliance	(E1) 3222	

Protective Covers

Part Number	8XS 186 531-012	PROTECTIVE COVER
	8157	CLEAR PROTECTIVE COVER

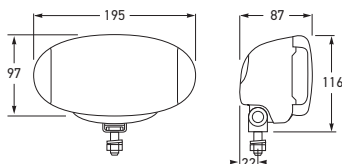


P/N 8157



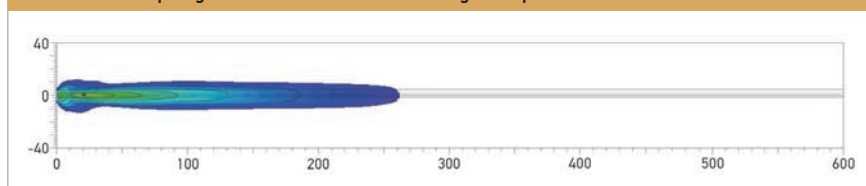
### Comet FF 550 Spread Beam Driving Lamp

H3 spotlight with black plastic housing.  
Complete with protective cover  
P/N 8XS 186 532-012.



Part Number	1326	SPREAD BEAM
Mounting	Upright or pendant.	
Power Consumption	55W	
Bulbs to Suit	12V 24V	YC1255 YC2470
Spare Part	9.1326.01	Driving lamp insert
Compliance	E1 3223	

Comet FF 550 Spotlight distance. Recorded with single lamp. Distance in metres.



### Comet FF 550 Fog Lamp

H3 fog lamp with black plastic housing.  
Complete with protective cover  
P/N 8XS 186 532-012.



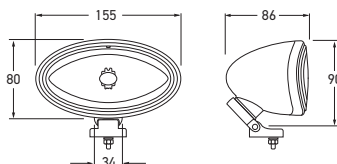
Part Number	1126	FOG BEAM
Mounting	Upright or pendant.	
Power Consumption	55W	
Bulbs to Suit	12V 24V	YC1255 YC2470
Spare Part	9.1126.01	Fog lamp insert
Compliance	E1 3223	

### Protective Covers



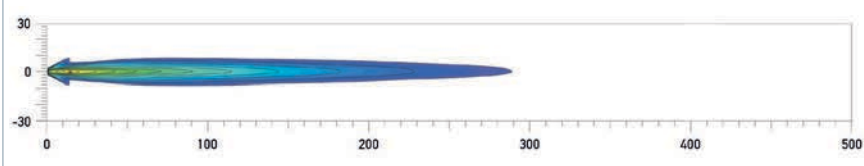
P/N 8158

Part Number	8XS 186 532-012	PROTECTIVE COVER
	8158	CLEAR PROTECTIVE COVER



Part Number	1312	SPREAD BEAM
Mounting	Upright or pendant.	
Power Consumption	55W	
Bulbs to Suit	12V 24V	YC1255 YC2470
Spare Part	9.1312.01	Driving lamp insert
Compliance	(E1) 651	

Comet 100 Spread Beam distance. Recorded with single lamp. Distance in metres.



### Comet 100 Spread Beam Driving Lamp

Spread beam driving lamp with modern clear hardened glass lens. The innovative Free-Form (FF) technology ensures concentrated light output. Complete with protective cover P/N 8100.



Part Number	1112	FOG BEAM
Mounting	Upright or pendant.	
Power Consumption	55W	
Bulbs to Suit	12V 24V	YC1255 YC2470
Spare Part	9.1112.01	Fog lamp insert
Compliance	(E1) 650	

### Comet 100 Fog Lamp

Fog beam lamp with modern clear hardened glass lens. The innovative Free-Form (FF) technology ensures concentrated light output. Complete with protective cover P/N 8100.



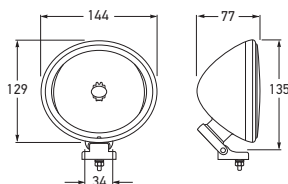
### Comet 100 Protective Covers

Part Number	8100	PROTECTIVE COVER
Part Number	8143	CLEAR PROTECTIVE COVER



### Comet 200 Spread Beam Driving Lamp

Spread beam driving lamp with modern clear hardened glass lens. The innovative Free-Form (FF) technology ensures concentrated light output. Complete with protective cover P/N 8101.



Part Number	1313	SPREAD BEAM
Mounting	Upright.	
Power Consumption	55W	
Bulbs to Suit	12V 24V	YC1255 YC2470
Spare Part	9.1313.01	Driving lamp insert
Compliance	(E1) 646	

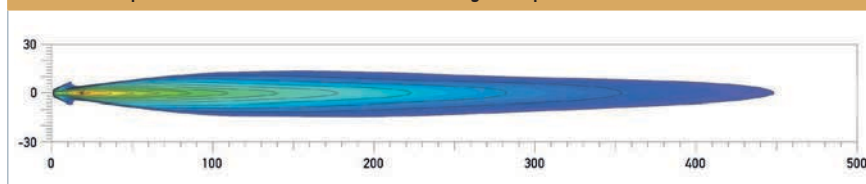
### Comet 200 Spread Beam Driving Lamp

Modern 'cool blue' lens design version of P/N 1313. The light colour remains white. Complete with protective cover P/N 8101.



Part Number	1313-BLUE	SPREAD BEAM
Mounting	Upright.	
Power Consumption	55W	
Bulb to Suit	YC1255	
Spare Part	9.1313.01B	Blue lens driving lamp insert
Compliance	(E1) 647	

Comet 200 Spread Beam distance. Recorded with single lamp. Distance in metres.



### Comet 200 Fog Lamp

Fog beam lamp with modern clear hardened glass lens. The innovative Free-Form (FF) technology ensures concentrated light output. Complete with protective cover P/N 8101.



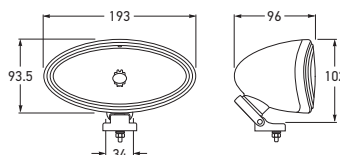
Part Number	1113	FOG BEAM
Mounting	Upright or pendant.	
Power Consumption	55W	
Bulbs to Suit	12V 24V	YC1255 YC2470
Spare Part	9.1113.01	Fog lamp insert
Compliance	(E1) 645	

### Comet 200 Protective Covers



Part Number	8101	PROTECTIVE COVER
Part Number	8144	CLEAR PROTECTIVE COVER





### Comet 300 Spread Beam Driving Lamp

Spread beam driving lamp with modern clear hardened glass lens. The innovative Free-Form (FF) technology ensures concentrated light output. Complete with protective cover P/N 8102.



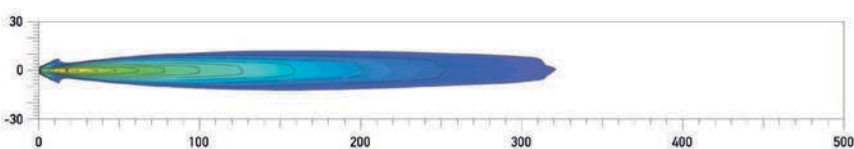
Part Number	1314-BLUE	SPREAD BEAM
Mounting	Upright or pendant.	
Power Consumption	55W	
Bulb to Suit	YC1255 YC2470	
Spare Part	9.1314.01B	Blue lens driving lamp insert
Compliance	(E1) 649	

### Comet 300 Spread Beam Driving Lamp

Modern 'Cool Blue' lens design version of P/N 1314. The light colour remains white. Complete with protective cover P/N 8102.



Comet 300 Spread Beam distance. Recorded with single lamp. Distance in metres.



Part Number	1114	FOG BEAM
Mounting	Upright or pendant.	
Power Consumption	55W	
Bulbs to Suit	12V YC1255 24V YC2470	
Spare Part	9.1114.01	Fog lamp insert - white
Compliance	(E1) 648	

### Comet 300 Fog Lamp

Fog beam lamp with modern clear hardened glass lens. The innovative Free-Form (FF) technology ensures concentrated light output. Complete with protective cover P/N 8102.



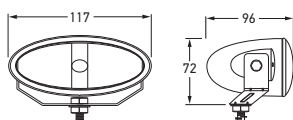
### Comet 300 Protective Covers

Part Number	8102	PROTECTIVE COVER
Part Number	8145	CLEAR PROTECTIVE COVER



## FF 50 Spread Beam Driving Lamp

Compact driving lamp featuring modern clear lens design and Free-Form (FF) reflector.

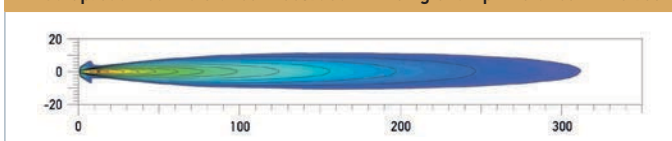


Part Number	1322	SPREAD BEAM
	1322-BLUE	
Mounting	Upright or pendant.	
Power Consumption	55W	
Bulb to Suit	CA1255	
Compliance	(E1) 1210	



P/N 1322-BLUE

FF 50 Spread Beam distance. Recorded with single lamp. Distance in metres.



## FF 50 Fog Lamp

Compact fog lamp featuring modern clear lens design and Free-Form (FF) reflector.

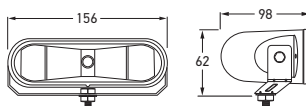


Part Number	1122	FOG BEAM
Mounting	Upright or pendant.	
Power Consumption	55W	
Bulb to Suit	CA1255	
Compliance	E1 1209	

## FF 50 Clear Protective Cover

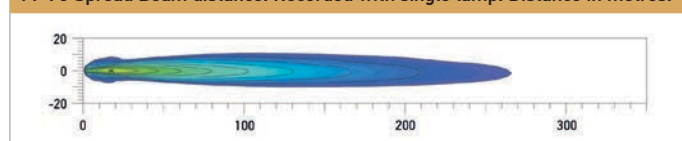


Part Number	8147
-------------	------



Part Number	1323	SPREAD BEAM
	1323-BLUE	
Mounting	Upright or pendant.	
Power Consumption	55W	
Bulb to Suit	CA1255	
Compliance	(E) 1212	

FF 75 Spread Beam distance. Recorded with single lamp. Distance in metres.

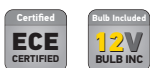


## FF 75 Spread Beam Driving Lamp

Compact driving lamp featuring modern clear lens design and Free-Form (FF) reflector.



P/N 1323-BLUE



Part Number	1123	FOG BEAM
Mounting	Upright or pendant.	
Power Consumption	55W	
Bulb to Suit	CA1255	
Compliance	(E) 1211	

## FF 75 Fog Lamp

Compact fog lamp featuring modern clear lens design and Free-Form (FF) reflector.



## FF 75 Clear Protective Cover

Part Number	8148
-------------	------

