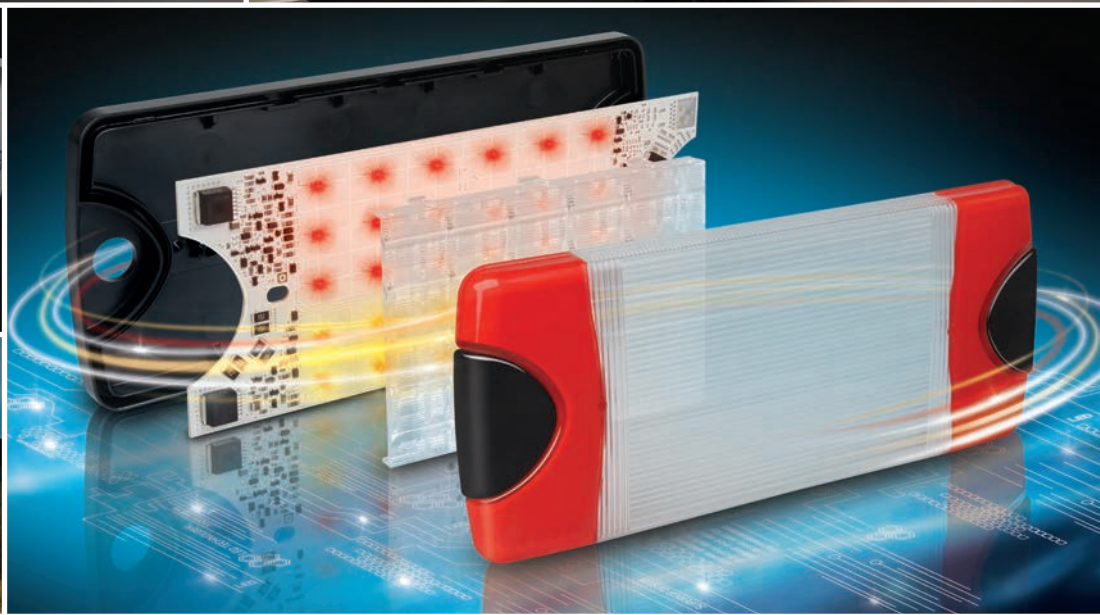




Technology with Vision

HELLA NEW ZEALAND CATALOGUE 2014-2016



Road Transport Lighting, Safety Lighting and Accessories

Expertly Designed and Precision Manufactured

Welcome to HELLA New Zealand's 2014 - 2016 Catalogue

Our 2014 - 2016 catalogue offers a comprehensive range of innovative road transport lighting, safety lighting and accessories for the transport sector.

Since the launch of our first LED automotive signal lamps in 1990, HELLA design and commitment to excellence continues to set new standards. HELLA's innovative solutions have become the benchmark for the road transport industry with lamps to suit the most demanding environmental conditions.

When you select a HELLA LED based product you know that functional safety, a perfect fit and long term product durability are guaranteed.

You have our promise that as a local designer and developer, manufacturer and service provider we will stand behind our products.

HELLA-New Zealand Limited

81-83 Ben Lomond Crescent
Pakuranga, Auckland, New Zealand
PO Box 51-427, Auckland 2140,
New Zealand

Head Office:

Tel: +64 (0) 9 577 0000
Fax: +64 (0) 9 576 2476

Sales/Customer Service:

Tel: +64 (0) 9 577 0366
Fax: +64 (0) 9 576 8202
nzsales@hella.co.nz

www.hella.co.nz



HELLA Fit and Forget LED Products

Where Environmental Choice meets Economic Sense

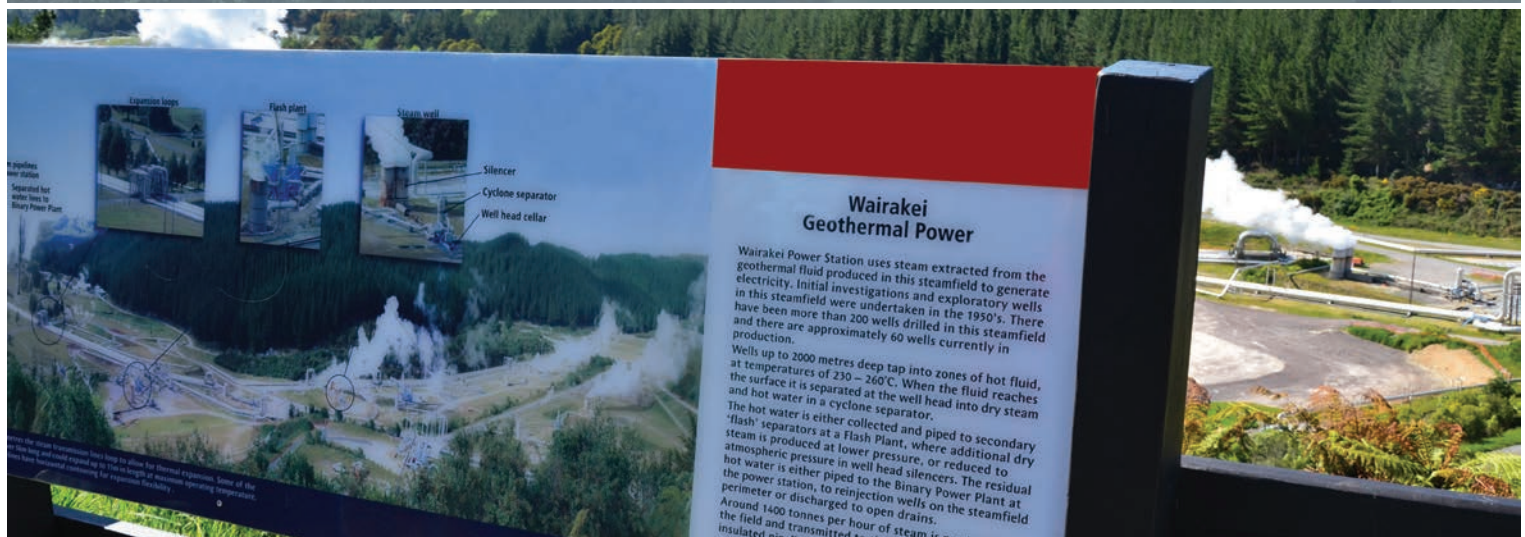
In a world where the development of renewable energy sources and the conservation of precious resources is given prominence by scientists and decision makers, energy efficient LED lighting has a substantial role to play towards the lowering of our carbon footprint without sacrificing functionality or compromising safety.

At HELLA New Zealand we are dedicated to designing and manufacturing products for an extended useful economic life, which is the responsible choice to conserve the world's precious resources.

Martin Reinbach, Managing Director, HELLA-New Zealand Limited



HELLA Fit and Forget – The responsible choice for a sustainable tomorrow.



PRODUCT SECTION CONTENTS

Finding your way around this catalogue is easy with clear section headings on each page, a consistent style and user-friendly display of all product information. For reference by part number, refer to the index at the rear of the catalogue.

ABOUT HELLA
NEW ZEALAND



PAGE 4-5

MARKER AND
SIGNAL LAMPS



PAGE 6-71

LED SAFETY
DAYLIGHTS™



PAGE 72-83

HEADLAMPS
AND INSERTS



PAGE 84-101

FOG AND
DRIVING LAMPS



PAGE 102-121

WORK LAMPS



PAGE 122-147

EMERGENCY
LIGHTING & SIGNAL
WARNING LAMPS



PAGE 148-169

INTERIOR/EXTERIOR
LIGHTING



PAGE 170-197

RELAYS AND
FLASHER UNITS



PAGE 198-217

ACCESSORIES



PAGE 218-293

HELLA
WORKSHOP



PAGE 294-303

HELLA
BEAMSETTERS



PAGE 304-305

AUTOMOTIVE BULBS



PAGE 306-335

3RD EDITION ADR
REFERENCE GUIDE

HELLA Part No.	Engineering Drawing No.	A.D.R. No.	Function
2550	001384-28	48/00	Number Plate Lamp
2551	001384-29	48/00	Number Plate Lamp
2553	951048-02	48/00	Number Plate Lamp
2554	950921-00	48/00	Number Plate Lamp
2555	001389-10	48/00	Number Plate Lamp
2557	900967-03	48/00	Number Plate Lamp
2558	004525-00	48/00	Number Plate Lamp
2559	959440-30	48/00	Number Plate Lamp
2902	002014-11	47/00	Retro Reflector (Red/
2910	900913-04	47/00	Retro Reflector (Red/
2915	002014-03	47/00	Retro Reflector (Amb

PAGE 336-350

INDEX BY
PART NUMBER

INDEX BY PART NUMBER		
15	1533-RE24V	145
15	1533-SM	136
14	1533-SM24V	136
22	1533-SW	147
22	1535	134
22	1539-LED	140, 147
	1540	

PAGE 351-362

HELLA NEW ZEALAND

TECHNOLOGY WITH VISION

For over 20 years HELLA New Zealand has adopted the entrepreneurial spirit of its founders and developed into a LED lighting technology company with comprehensive in-house design and manufacturing facilities.

The history of HELLA is inextricably linked to the development of the automobile. Registered in June 1899, in Lippstadt, Germany, the company has grown due to entrepreneurial boldness and foresight, developing innovative products and processes, a committed workforce and by a customer-focused approach.

HELLA International represents the worldwide HELLA organisation. This includes all HELLA production facilities, research and development, original equipment and aftermarket sales and trading companies with over 29,000 employees. With over 100 manufacturing facilities, production subsidiaries and joint ventures located in more than 35 countries, the company group is a global-operations partner to the motor industry. Sales companies and partners worldwide supply automobile manufacturers and the specialised trade around the globe.

HELLA-New Zealand Limited

HELLA-New Zealand Limited was founded in 1973 to manufacture, market and distribute products in New Zealand.

Today the company designs and manufactures innovative lighting products for the commercial transport and automotive industries, using the latest LED (Light Emitting Diode) technology. With these products HELLA New Zealand is a supplier to automotive manufacturers and commercial transport fleets all over the world.

HELLA is a prominent brand in the New Zealand aftermarket and in the commercial transport sector, with key relationships with original equipment bus, coach and trailer manufacturers.

Customer Service

HELLA backs up its products with a dedicated customer services team that can advise customers on product availability, product selection, installation and delivery.

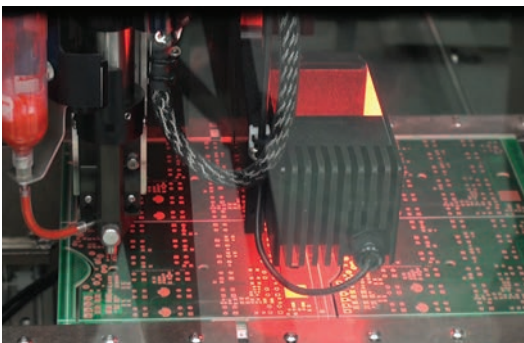
The advantage of manufacturing a large percentage of our products locally; for both local customers and a large overseas client base, allows for a high degree of flexibility and customisation unmatched in the New Zealand automotive industry, thus our order fill rate ranks consistently among the highest in the industry.

HELLA customer service provides customers with 'best fit' solutions based on sound professional knowledge and experience in the commercial transport sector. With access to a wide global database within the HELLA group, customer service is the recommended first stop for any customer inquiries.

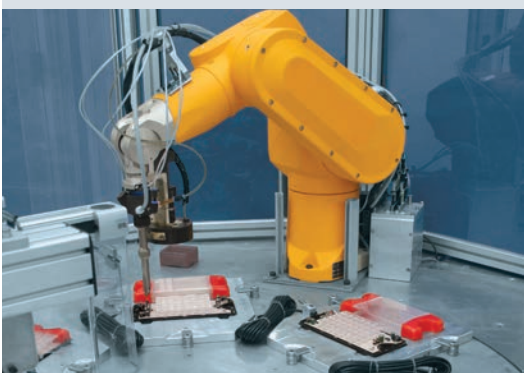




EXPERTLY DESIGNED AND PRECISION MANUFACTURING FOR VISIBILITY AND SAFETY ON NEW ZEALAND ROADS



“Fit and Forget by Design
is your peace of mind of
purchasing a product which is
designed to stand the test of
time, without compromise.”



Fit and Forget by Design is not just a marketing slogan, it is a philosophy adopted by our design team in 1998 when HELLA New Zealand designed our first DuraLED® signal lamp for the commercial transport sector.

To create lamps that will function faultlessly for the vehicle life and beyond requires dedication to excellence and the most rigorous, verified test regime. Extensive consultation with our most discerning industry partners was conducted, followed by months of field tests before the first DuraLED® was ever sold to a customer.

Over the past 16 years the same team of dedicated perfectionists have continuously improved the latest designs from ongoing research and market experience.

Material selection, LEDs, optics, drive electronic, circuit protection, design of the sealing geometries, rigidity versus deliberate flexibility of the mounting system all work in harmony to create a product of truly lasting value and safe operation.

Fit and Forget by Design is your peace of mind of purchasing a product which is designed to stand the test of time, without compromise.



Designed and tested for guaranteed
reliability and performance.



Marker and Signal Lamps

The range of HELLA Marker and Signal Lamps have been accepted as the most advanced lighting solution for commercial vehicles.



Contents

Marker and Signal Lamps

Quick Reference Product Guide.....	12-13	LED Strip Marker and Signal.....	46
DuraLED®	14-17	High Level Brake Lamps	47-48
DuraLED® Combi.....	18-21	Rear Bulb Combination.....	49-50
EuroLED® Rear.....	22	Designline Bulb Lamps.....	51-53
LED Combination Lamps.....	23-25	Bulb 76mm Round.....	54
Jumbo-S LED Lamps.....	26-27	Bulb 84 x 84mm Square	55
Designline LED Modules	28-29	60mm Module Marker and Signal.....	56-57
Jumbo LED Modules.....	30	Direction Indicator Lamps.....	58-60
83mm Round LED	31-33	Marker Lamps.....	61
110mm Round LED.....	34-35	Reflectors.....	62-63
LED Flush Mount Marker.....	36	Number Plate	64
DuraLED® Marker.....	37-44	Spare Parts for End of Line Products	65
LED Surface Mount Marker.....	45	Accessories.....	66-71



LED MARKER AND SIGNAL LAMPS

Our expanding range of LED based marker and signal lamps has been accepted as the most advanced solution to trim maintenance expenses of Commercial Transport Fleets and Operators.

Since the introduction of the first HELLA LED signal lamp in 1990, this innovative technology has set new standards and received considerable worldwide recognition. Over two decades, we have refined our designs and developed production technologies now used in millions of lamps produced annually, all engineered and tested to the most demanding standards.

Our local research, development and production facilities have allowed us to respond quickly to market feedback from New Zealand and Australian manufacturers of transport equipment, as well as many discerning Fleet Operators from all over the globe. Their input has been invaluable and has ultimately helped New Zealand manufactured LED technology products to succeed in world markets.

HELLA Fit and Forget LED lighting systems are now firmly established as the solution that fully meets both environmental and economic considerations of the astute operator, in an ever growing catalogue of applications.

DuraLED®

HELLA's growing range of DuraLED® lamps, incorporating the latest LED technology, has proven to be the superior economic and environmental choice for transport operators in New Zealand. DuraLED® has a track record to last the distance. The first DuraLED® lamps were supplied in 1998, some 16 years ago and are still in use today.

DuraLED® lamps offer distinctive designs with shallow shapes and concealed mounting screws for enhanced protection against damage.

Most marker and signal lamps are pre-wired with sheathed multi-core cable, fully sealed against dust and moisture to International Protection Standards IP 6K6/IP 6K7, and compliant with current ADR (Australian Design Rules). As a result, these lamps are approved for use in New Zealand and Australia.

Once again following market demand, we now offer a range of selected models of DuraLED® lamps with moulded-in-Deutsch (DT) Connectors.

HELLA's innovative DuraLED® lamps are designed for use on trucks, buses, caravans, emergency vehicles and speciality applications. The range includes marker lamps, direction indicators, end outline lamps, position lamps, high intensity warning signal lamps and a combination stop/rear position/indicator lamp range incorporating special ultra wide optics for enhanced visibility.

EuroLED®

The EuroLED® marker and signal range of LED lamps harness the benefits of a single high intensity LED. The use of precision optics give the EuroLED® lamp a unique look along with the benefits of low power consumption. EuroLED® marker and signal lamps feature a shallow design and special ultra wide optics for significantly improved side visibility.

EuroLED® lamps are also shockproof and fully sealed to withstand temporary water submersion and high-pressure washing, ensuring long service life and durability. EuroLED® lenses are made from specially formulated high impact acrylic with enhanced chemical resistance.





Superior Lens and Optic Materials

The majority of HELLA DuraLED® and EuroLED® lamps are produced using specially formulated enhanced high impact acrylic, that has superior resistance to most commonly used wash and cleaning liquids.

HELLA recommends these hermetically sealed marker and signal lamps for most commercial transport applications to provide an ultra long term and environmentally friendly lighting solution.

In 2009 HELLA took the design and development of ultra durable lighting solutions to a new level by specifying the Swiss Made high-tech material Grilamid® for some selected applications.

Grilamid® has quickly become the material of choice for the discerning equipment operator and fleet managers.

UV Resistance

New Zealand and Australia are exposed to some of the highest and harshest UV radiation in the world. Most consumers will have purchased and experienced products made from plastic materials that deteriorate, fade and often become brittle very quickly when exposed to the sun.

Most of the LED lighting equipment we supply is likely to be continually exposed to this harsh environment. HELLA New Zealand only manufactures products from materials which are highly resistant to UV deterioration.

HELLA New Zealand LED lamps are designed to withstand our harsh environmental conditions and will tolerate long term exposure to high UV levels without fading or embrittlement.

GRILAMID® Specified by HELLA

Grilamid® has quickly become the material of choice for operators of equipment exposed to high vibration, impact and chemical conditions.

An Increasing Range of Lamps with Grilamid® Lenses and Optics

Grilamid® is a revolutionary optical grade Polyamide made in Switzerland. Grilamid® offers an unbeatable combination of properties including toughness against impact, long term UV stability and resistance to commonly used chemicals and washes. As such Grilamid® has become the specified material of choice for many of HELLA's valued commercial customers and end users.

HELLA has responded to this strong customer demand and has significantly expanded the range of products with optional Grilamid® lenses. In addition, we have taken the bold step and standardised Grilamid® for some popular lamps at no extra cost to our customers.

Long Term Transparency

Grilamid® will not lose its lustre or embrittle over time but will remain clear, transparent and impact tough for the life of the product. Grilamid® retains its superior optical performance without discolouration.

Cleaning Products

The use of cleaning chemicals and even general liquid detergents is sometimes used as a reason to void warranties for products made from Polycarbonate. Such chemicals can cause crazing and/or cracking of this particular plastic type.

Grilamid® is highly resistant to chemicals commonly used in the transport industry, even in applications where it is regularly exposed to chemicals used to wash and sterilise equipment used in our Primary Industries. It is the ideal material for a true Fit and Forget performance.

Grilamid® Retains its Toughness

LED truck and trailer lamps are frequently exposed to mechanical impacts by stones, tree branches and general shocks. Uncoated Polycarbonate will lose its impact resistance over time.

Tests prove and market feedback confirms the superior strength and toughness of Grilamid® is not compromised even through the prolonged effects of weathering and UV exposure.



Stress cracked PC.

Grilamid® subjected to the same conditions.

HELLA Marker and Signal Lamps have been accepted as the most advanced lighting solution for commercial vehicles.



Electromagnetic Compatibility (EMC)

HELLA LED lamps are electronic devices. The electrical circuits contain components that have been optimised to suppress frequencies that can interfere with communication equipment or even the common radio. The circuits are also specially designed to reduce the susceptibility to interference from electric fields.

Protection Against Damage Due to Voltage Spikes

HELLA lamps are protected against damage from positive voltage spikes caused by events such as load dump conditions and overvoltage. The circuits are also protected against reverse polarity connection and negative voltage spikes.

Easy Refurbishment of Acrylic and Grilamid® Lenses

In a world consuming resources at an ever increasing rate, HELLA LED lamps manufactured with enhanced impact acrylic and Grilamid® are a truly long-term investment.

Both these materials can be refurbished to near new condition by polishing out fine scratches and road grime.

As illustrated in the photo, a DuraLED® lamp with several years of active high mileage road use can be refurbished to pristine near new condition.



Acrylic and Grilamid® lamps can be polished to look like new.

HELLA Fit and Forget LED lighting systems are firmly established as the solution that fully meets both environmental and economic considerations of the astute operator.



TECHNICAL PRODUCT LOGOS

Your guide to understanding the technical product logos found throughout the marker and signal section.



Multivolt™

One of the leading advantages of HELLA's LED technology is the Multivolt™ circuitry fitted to most of our LED lamps, ensuring a uniform level of intensity and optimum brightness. Multivolt™ LED lamps can be connected to either 12 or 24 volt DC electrical systems. The light performance will not be adversely affected by voltage drop over long cables and corroded connectors. LED lamps fitted with Multivolt™ circuitry are clearly marked throughout the catalogue.



Grilamid®

Grilamid® has quickly become the material of choice for operators of equipment exposed to high vibration and impact conditions as well as in applications regularly exposed to petrochemicals and chemicals used to wash and sterilise equipment used in our Primary Industries.

See page 9 for further information on Grilamid®



HCS - HELLA Compatibility Solution

Vehicles operating on New Zealand public roads require the direction indicator lamps to be monitored for correct function. When a 21 watt bulb based lamp is exchanged with an LED lamp, some flasher units will not recognise this LED lamp because of its low power consumption and indicate a bulb failure. Many transport fleets will operate trucks/trailers which can feature a mixture of bulb based direction indicator lamps and low power consumption LED direction indicator lamps.

In 1999 HELLA New Zealand designed the HELLA Compatibility Solution (HCS) to offer seamless compatibility between conventional bulb based lamps and HCS equipped LED lamps. The HCS control unit recognizes either a standard bulb lamp or an HCS LED lamp or a mixture thereof, and continues to work normally, without triggering the bulb failure warning function.

This technical solution has become the ISO Standard 13207-1 which is being incorporated into the body electronic of European Trucks.

Astute fleet operators today specify LED lamps designed to ISO Standard 13207-1 to ensure the future-proofing of their fleet.

See page 210 for further information on HCS Technology and ISO 13207-1



Ultra Wide Visibility Optics

HELLA continues to increase its range of LED signal lamps that incorporate Ultra Wide Visibility Optics. LED lamps strictly designed to minimum legal requirements in the horizontal +/-10 to +/-45 degree field suffer from signal fade and become less visible in bright sunlight.

By incorporating Ultra Wide Visibility Optics, HELLA LED signal lamps are much more noticeable to following drivers particularly as the vehicle in front turns and the LED stop or turn signal is viewed from an angle.

HELLA LED signal lamps, incorporating Ultra Wide Visibility Optics, far exceed the minimum legal brightness requirement beyond the +/-10 degree horizontal angle. These lamps provide a significantly enhanced stop and turn signal to the driver of the following vehicle. LED signal lamps incorporating Ultra Wide Visibility Optics, are clearly marked throughout the catalogue.



Enhanced Definition Technology (EDT)

A stop lamp has to be instantly recognised as a warning signal. To further enhance recognition an increase in illuminated area (compared to the rear position lamp) is combined with an increase in intensity. As a result the illuminated area gets larger and brighter on an EDT lamp for increased safety and awareness

QUICK REFERENCE PRODUCT GUIDE

LED LAMPS



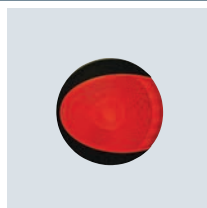
PAGE 15



PAGE 18



PAGE 19



PAGE 22



PAGE 23



PAGE 24



PAGE 26



PAGE 27



PAGE 28



PAGE 29



PAGE 30



PAGE 32



PAGE 34



PAGE 36



PAGE 37



PAGE 38



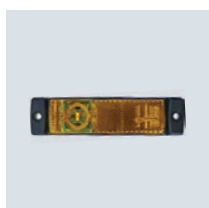
PAGE 40



PAGE 42



PAGE 44



PAGE 45



PAGE 45



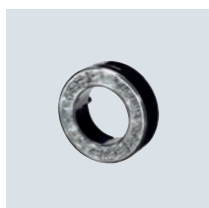
PAGE 46



PAGE 47



PAGE 47



PAGE 57



PAGE 60



PAGE 64

BULB LAMPS



PAGE 48



PAGE 49



PAGE 49



PAGE 50



PAGE 50



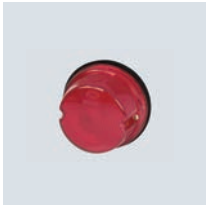
PAGE 51



PAGE 52



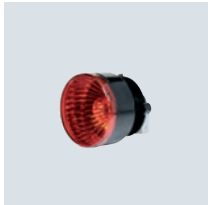
PAGE 53



PAGE 54



PAGE 55



PAGE 56



PAGE 58



PAGE 58



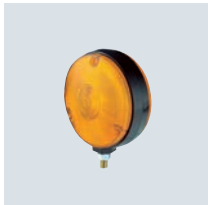
PAGE 58



PAGE 59



PAGE 59



PAGE 60



PAGE 61



PAGE 61



PAGE 61



PAGE 64



PAGE 64



PAGE 64

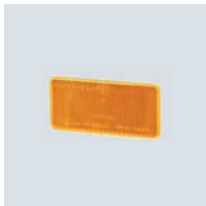
REFLECTORS



PAGE 62



PAGE 62



PAGE 63

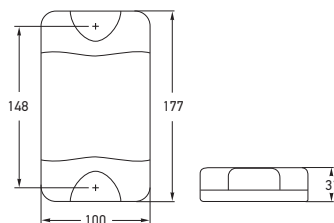
ACCESSORIES



PAGE 66

DuraLED® Stop/Rear Position Lamp with Night Light

DuraLED® stop, rear position lamp featuring Enhanced Definition Technology (EDT) for increased safety and awareness. Night light function allows illumination of the rear position lamp independently from the remaining marker lamps on the vehicle. Features HELLA Ultra Wide Visibility Optics for significantly improved side visibility.



Part Number	2330-V
Mounting	Two hole surface mount with mounting bushes supplied. Suitable for vertical mounting.
Voltage	Multivolt™ for optimum brightness at input voltages from 9 to 33 volts.
Power Consumption	Stop: 6W Rear position: 2.5W Night: 2.5W
Protection	Reverse polarity and 5000 watt Transient Voltage Suppressor (TVS) IP 6K6 (Protection against dust and high-pressure water jets) IP 6K7 (Protection against dust and temporary water immersion)
Cable Length	Pre-wired with 2.5m of sheathed multi-core cable.
Compliance	ADR 49/00 E24 5850 ECE R7/02

See page 66 for DuraLED® accessories.

DuraLED® Rear Direction Indicator Lamp

DuraLED® rear direction indicator lamp for trucks, buses, caravans and trailers. Features HELLA Ultra Wide Visibility Optics for significantly improved side visibility.



Part Number	2151-V	2151-VCS	HCS TECHNOLOGY
Mounting	Two hole surface mount with mounting bushes supplied. Suitable for vertical mounting.		
Voltage	Multivolt™ for optimum brightness at input voltages from 9 to 33 volts.		
Power Consumption	2151-V 6W	2151-VCS 4W	
Protection	Reverse polarity and 5000 watt Transient Voltage Suppressor (TVS) IP 6K6 (Protection against dust and high-pressure water jets) IP 6K7 (Protection against dust and temporary water immersion)		
Cable Length	Pre-wired with 2.5m of sheathed multi-core cable.		
Compliance	ADR 6/00: Cat 2a E24 5850 ECE R6/01 ISO 13207-1 (2151-VCS only)		

See page 210 for further information on HCS Technology and ISO 13207-1.

DuraLED® Reversing Lamp

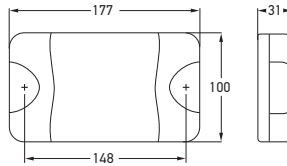
DuraLED® reversing lamp for trucks, buses, caravans and trailers.



Part Number	1430-V
Mounting	Two hole surface mount with mounting bushes supplied. Suitable for vertical mounting.
Voltage	Multivolt™ for optimum brightness at input voltages from 9 to 33 volts.
Power Consumption	4W
Protection	Reverse polarity and 5000 watt Transient Voltage Suppressor (TVS) IP 6K6 (Protection against dust and high-pressure water jets) IP 6K7 (Protection against dust and temporary water immersion)
Cable Length	Pre-wired with 2.5m of sheathed multi-core cable.
Compliance	ADR 1/00 E24 5850 ECE R23/00

Reversing lamps are not designed for continuous operation.

MARKER AND SIGNAL LAMPS



Part Number	2330-H					
	2330-HBL		BLISTER PACK			
	2330-HBULK		PACK OF 4			
Mounting	Two hole surface mount with mounting bushes supplied. Suitable for horizontal mounting.					
Voltage	Multivolt™ for optimum brightness at input voltages from 9 to 33 volts.					
Power Consumption	Stop:	6W	Rear position:	2.5W	Night:	2.5W
Protection	Reverse polarity and 5000 watt Transient Voltage Suppressor (TVS) IP 6K6 (Protection against dust and high-pressure water jets) IP 6K7 (Protection against dust and temporary water immersion)					
Cable Length	Pre-wired with 2.5m of sheathed multi-core cable.					
Compliance	ADR 49/00		E24 5850		ECE R7/02	

See page 66 for DuraLED® accessories.

See page 66 for DuraLED® accessories.

DuraLED® Stop/Rear Position Lamp with Night Light

DuraLED® stop, rear position lamp featuring Enhanced Definition Technology (EDT) for increased safety and awareness. Night light function allows illumination of the rear position lamp independently from the remaining marker lamps on the vehicle. Features HELLA Ultra Wide Visibility Optics for significantly improved side visibility.



P/N 2330-HBL



Part Number	2151-H			
	2151-HBL		BLISTER PACK	
	2151-HBULK		PACK OF 4	
	2151-HCS		HCS TECHNOLOGY	
Mounting	Two hole surface mount with mounting bushes supplied. Suitable for horizontal mounting.			
Voltage	Multivolt™ for optimum brightness at input voltages from 9 to 33 volts.			
Power Consumption	2151-H/...-HBL/...-HBULK	6W	2151-HCS	4W
Protection	As per P/N 2330-H.			
Cable Length	Pre-wired with 2.5m of sheathed multi-core cable.			
Compliance	ADR 6/00: Cat 2a	E24 5850	ECE R6/01	ISO 13207-1 (2151-HCS only)

See page 210 for further information on HCS Technology and ISO 13207-1.

See page 210 for further information on HCS Technology and ISO 13207-1.

DuraLED® Rear Direction Indicator Lamp

DuraLED® rear direction indicator lamp for trucks, buses, caravans and trailers. Features HELLA Ultra Wide Visibility Optics for significantly improved side visibility.



P/N 2151-HBL



Part Number	1430-H		
	1430-HBL	BLISTER PACK	
Mounting	Two hole surface mount with mounting bushes supplied. Suitable for horizontal mounting.		
Voltage	Multivolt™ for optimum brightness at input voltages from 9 to 33 volts.		
Power Consumption	4W		
Protection	As per P/N 2330-H.		
Cable Length	Pre-wired with 2.5m of sheathed multi-core cable.		
Compliance	ADR 1/00	E24 5850	ECE R23/00
Reversing lamps are not designed for continuous operation.			

Reversing lamps are not designed for continuous operation.

DuraLED® Reversing Lamp

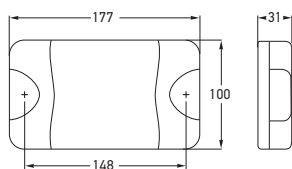
DuraLED® reversing lamp for trucks, buses, caravans and trailers.



P/N 1430-HBL

DuraLED® Stop/Rear Position Lamp with Night Light

DuraLED® stop, rear position lamp featuring Enhanced Definition Technology (EDT) for increased safety and awareness. Night light function allows illumination of the rear position lamp independently from the remaining marker lamps on the vehicle.



Part Number	2330	
	2330-BULK	PACK OF 4
Mounting	Two hole surface mount with mounting bushes supplied. Suitable for horizontal or vertical mounting.	
Voltage	Multivolt™ for optimum brightness at input voltages from 9 to 33 volts.	
Power Consumption	Stop: 6W Rear position: 1W Night: 1W	
Protection	Reverse polarity and 5000 watt Transient Voltage Suppressor (TVS) IP 6K6 (Protection against dust and high-pressure water jets) IP 6K7 (Protection against dust and temporary water immersion)	
Cable Length	Pre-wired with 2.5m of sheathed multi-core cable.	
Compliance	ADR 49/00	

See page 66 for DuraLED® accessories.

DuraLED® Rear Direction Indicator Lamp

DuraLED® rear direction indicator lamp for trucks, buses, caravans and trailers.



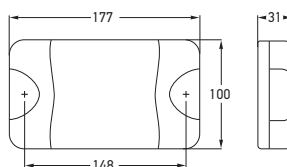
Part Number	2151	
	2151-BULK	PACK OF 4
Mounting	Two hole surface mount with mounting bushes supplied. Suitable for horizontal or vertical mounting.	
Voltage	Multivolt™ for optimum brightness at input voltages from 9 to 33 volts.	
Power Consumption	9W	
Protection	Reverse polarity and 5000 watt Transient Voltage Suppressor (TVS) IP 6K6 (Protection against dust and high-pressure water jets) IP 6K7 (Protection against dust and temporary water immersion)	
Cable Length	Pre-wired with 2.5m of sheathed multi-core cable.	
Compliance	ADR 6/00: Cat 2a	

MARKER AND SIGNAL LAMPS

Polycarbonate Lenses

Whilst polycarbonate features a higher impact resistance compared to our preferred Enhanced Impact Acrylic, the trade-off for polycarbonate is its lower resistance to a number of commonly used chemicals.

For applications where both extreme impact resistance as well as a high resistance to chemicals is required, we recommend HELLA LED lamps manufactured from Swiss-made Grilamid® Optical Nylon.



Part Number	2331-BULK	PACK OF 4
Mounting	Two hole surface mount with mounting bushes supplied. Suitable for horizontal or vertical mounting.	
Voltage	Multivolt™ for optimum brightness at input voltages from 9 to 33 volts.	
Power Consumption	Stop: 6W Rear position: 1W Night: 1W	
Protection	Reverse polarity and 5000 watt Transient Voltage Suppressor (TVS) IP 6K6 (Protection against dust and high-pressure water jets) IP 6K7 (Protection against dust and temporary water immersion)	
Cable Length	Pre-wired with 2.5m of sheathed multi-core cable.	
Lens Material	Polycarbonate.	
Compliance	ADR 49/00	
See page 66 for DuraLED® accessories.		

DuraLED® Stop/Rear Position Lamp with Night Light

DuraLED® stop, rear position lamp made from polycarbonate, for off-road vehicles such as logging trucks. Night light function allows illumination of the rear position lamp independently from the remaining marker lamps on the vehicle, resulting in low power consumption.



Part Number	2152-BULK	PACK OF 4
Mounting	Two hole surface mount with mounting bushes supplied. Suitable for horizontal or vertical mounting.	
Voltage	Multivolt™ for optimum brightness at input voltages from 9 to 33 volts.	
Power Consumption	9W	
Protection	Reverse polarity and 5000 watt Transient Voltage Suppressor (TVS) IP 6K6 (Protection against dust and high-pressure water jets) IP 6K7 (Protection against dust and temporary water immersion)	
Cable Length	Pre-wired with 2.5m of sheathed multi-core cable.	
Lens Material	Polycarbonate.	
Compliance	ADR 6/00: Cat 2a	

DuraLED® Rear Direction Indicator Lamp

DuraLED® rear direction indicator lamp made from polycarbonate for off-road vehicles such as logging trucks.



DuraLED® Combi-S Stop/Rear Position/Rear Direction Indicator Lamp - Heavy Duty

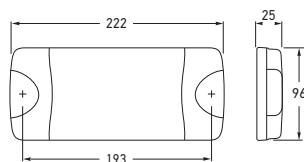
DuraLED® combination lamp featuring Ultra Wide Visibility Optics for significantly improved side visibility and Enhanced Definition Technology (EDT). Suitable for commercial and boat trailers. Shockproof and fully sealed to withstand water submersion and high-pressure washing. Optic appears clear until illuminated.



P/N 2378-BL



Ultra slim height of only 25mm.



Part Number	2378		
	2378-BL	BLISTER PACK	
	2378-BULK	PACK OF 12	
	2378-CS	HCS TECHNOLOGY	
Mounting	Two hole surface mount with mounting bushes supplied. Suitable for horizontal or vertical mounting.		
Voltage	Multivolt™ for optimum brightness in 12 and 24 volt systems.		
Power Consumption	Stop:	5W	
	Rear position:	1W	
	Rear direction indicator:	5W	
Protection	Reverse polarity and 5000 watt Transient Voltage Suppressor (TVS). IP 6K7 (Protection against dust and temporary water immersion) IP 6K9K (Protection against dust and high-pressure/steam jet cleaning)		
Cable Length	Pre-wired with 2.5m of sheathed multi-core cable.		
Lens Material	Grilamid®		
Compliance	ADR 6/00: Cat 2a	ADR 49/00	ISO 13207-1 (2378-CS only)
See page 210 for further information on HCS Technology and ISO 13207-1. See page 66 for DuraLED® accessories.			

COMBI-S LAMP FUNCTIONS



Stop



Rear position



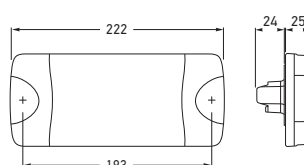
Rear direction indicator

DuraLED® Combi-S Stop/Rear Position/Rear Direction Indicator Lamp with DT Connector and Night Light - Heavy Duty

DuraLED® combination lamp featuring Ultra Wide Visibility Optics for significantly improved side visibility and Enhanced Definition Technology (EDT). Night light function allows illumination of the rear position lamp independently from the remaining marker lamps on the vehicle, resulting in low power consumption. Suitable for commercial and boat trailers. Shockproof and fully sealed to withstand water submersion and high-pressure washing. Optic appears clear until illuminated.



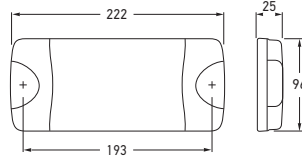
Rear view showing DT connector that allows application of self-adhesive heat shrink.



Part Number	2378-DT			
	2378-DTCS			HCS TECHNOLOGY
Mounting	Two hole surface mount with mounting bushes supplied. Suitable for horizontal or vertical mounting.			
Voltage	Multivolt™ for optimum brightness in 12 and 24 volt systems.			
Power Consumption	Stop:	5W	Rear direction indicator:	5W
	Rear position:	1W	Night:	1W
Protection	As per P/N 2378.			
Accessory	4963-P 6 pole DT plug, wedge and 6 contacts.			
Lens Material	Grilamid®			
Compliance	ADR 6/00: Cat 2a		ADR 49/00	ISO 13207-1 (2378-DTCS only)
See page 210 for further information on HCS Technology and ISO 13207-1.				



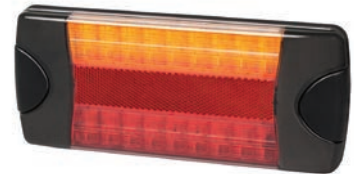
P/N 4963-P
Not included with lamp.



Part Number	2377		
	2377-BL		BLISTER PACK
Mounting	Two hole surface mount with mounting bushes supplied. Suitable for horizontal mounting.		
Voltage	Multivolt™ for optimum brightness in 12 and 24 volt systems.		
Power Consumption	Stop:	4W	
	Rear position:	1W	
	Rear direction indicator:	4W	
Protection	Reverse polarity and transient spike circuit protection. IP 6K7 (Protection against dust and temporary water immersion) IP 6K9K (Protection against dust and high-pressure/steam jet cleaning)		
Cable Length	Pre-wired with 2.5m of sheathed multi-core cable.		
Lens Material	Grilamid®		
Compliance	ADR 6/00: Cat 2a	ADR 47/00	ADR 49/00
See page 66 for DuraLED® accessories.			

DuraLED® Combi-R Stop/Rear Position/Rear Direction Indicator Lamp with Retro Reflector

DuraLED® combination lamp with 34cm² red retro reflector which features Enhanced Definition Technology (EDT). Suitable for light commercial and boat trailers. Shockproof and fully sealed to withstand water submersion and high-pressure washing.



P/N 2377-BL



Ultra slim height of only 25mm.

COMBI-R LAMP FUNCTIONS



Stop

Rear position

Rear direction indicator

DuraLED® Combi-R Trailer Lighting Kit

A complete Fit and Forget solution for trailers or caravans.

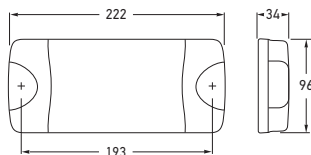


Part Number	2377-TP		
Kit Contents	Each trailer lamp kit contains:		
	2 x 2377	DuraLED® Combi-R stop/rear position and rear direction indicator lamp with retro reflector and 6m sheathed multi-core cable.	
	1 x 2559	LED number plate lamp with 5m sheathed multi-core cable.	
	1 x 4921	7 pole flat plug	



DuraLED® Combi Stop/Rear Position/ Rear Direction Indicator Lamp

DuraLED® combination lamp, features Ultra Wide Visibility Optics for significantly improved side visibility and Enhanced Definition Technology (EDT). Suitable for light commercial and boat trailers. Shockproof and fully sealed to withstand water submersion and high-pressure washing. Optic appears clear until illuminated.



Part Number	2379	
	2379-BL	BLISTER PACK
	2379-BULK	PACK OF 12
	2379-CS	HCS TECHNOLOGY
	2379-GMD (With Grilamid® lens)	

Mounting Two hole surface mount with mounting bushes supplied. Suitable for horizontal mounting.

Voltage Multivolt™ for optimum brightness at input voltages from 8 to 28 volts.

Power Consumption	P/N 2379	P/N 2379-CS/2379-GMD
	Stop:	5W
	Rear position:	1W
	Rear direction indicator:	5W

Protection Reverse polarity and 5000 watt Transient Voltage Suppressor (TVS)
IP 6K6 (Protection against dust and high-pressure water jets)
IP 6K7 (Protection against dust and temporary water immersion)

Cable Length Pre-wired with 6m of sheathed multi-core cable.
Blister pack pre-wired with 2.5m of sheathed multi-core cable.

Compliance	ADR 6/00: Cat 2a	ADR 49/00	E4 10176	ECE R6/01
	ECE R7/02	ISO 13207-1 (2379-GMD and 2379-CS only)		

See page 210 for further information on HCS Technology and ISO 13207-1. See page 66 for DuraLED® accessories.



P/N 2379-GMD

P/N 2379-BL

COMBINATION LAMP FUNCTIONS



Stop

Rear position

Rear direction indicator

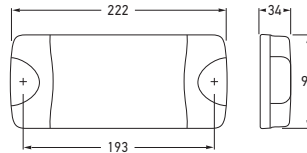
DuraLED® Multivolt™ Trailer Lighting Conversion Kit

A complete Fit and Forget solution for trailers or caravans. Features HELLA Ultra Wide Visibility Optics for significantly improved side visibility.



Part Number	2379-TP	
Kit Contents	Each trailer lamp kit contains:	
	2 x 2379	DuraLED® Combination stop/rear position and rear direction indicator lamp with 6m cable
	2 x 2920	Red retro reflector
	1 x 2559	LED number plate lamp
	1 x 4921	7 pole flat plug





Part Number	2380		
	2380-BL		BLISTER PACK
	2380-GMD		GRILAMID® LENS
Mounting	Two hole surface mount with mounting bushes supplied. Suitable for horizontal mounting.		
Voltage	Multivolt™ for optimum brightness in 12 and 24 volt systems.		
Power Consumption	Stop:	5W	
	Rear position:	1W	
	Rear direction indicator:	4W	
	Reverse:	3W	
Protection	Reverse polarity and 5000 watt Transient Voltage Suppressor (TVS). IP 6K7 (Protection against dust and temporary water immersion) IP 6K9K (Protection against dust and high-pressure/steam jet cleaning)		
Cable Length	Pre-wired with 2.5m of sheathed multi-core cable.		
Lens Material	Grilamid®		
Compliance	ADR 1/00 ECE R6/01	ADR 6/00: Cat 2a ECE R7/02	ADR 49/00 ECE R23/00
See page 66 for DuraLED® accessories.			

DuraLED® Combi Stop/Rear Position/Rear Direction Indicator/Reversing Lamp

DuraLED® combination lamp featuring modern clear lens design. Low power consumption and long life equates to economical running costs. Ideal for trucks and utes.

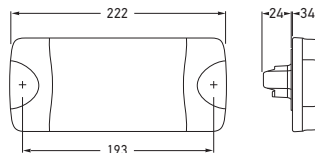


P/N 2380-BL

COMBINATION LAMP FUNCTIONS



Stop Rear position Rear direction indicator Reverse



Part Number	2380-DT		
	2380-DTGMD		GRILAMID® LENS
Mounting	Two hole surface mount with mounting bushes supplied. Suitable for horizontal mounting.		
Voltage	Multivolt™ for optimum brightness in 12 and 24 volt systems.		
Power Consumption	Stop:	5W	
	Rear position:	1W	
	Rear direction indicator:	4W	
	Reverse:	3W	
Protection	Reverse polarity and 5000 watt Transient Voltage Suppressor (TVS). IP 6K7 (Protection against dust and temporary water immersion) IP 6K9K (Protection against dust and high-pressure/steam jet cleaning)		
Accessory	4963-P	6 pole DT plug, wedge and 6 contacts.	
Lens Material	Grilamid®		
Compliance	ADR 1/00 ECE R6/01	ADR 6/00: Cat 2a ECE R7/02	ADR 49/00 ECE R23/00

E24

5870

DuraLED® Combi Stop/Rear Position/Rear Direction Indicator/Reversing Lamp with DT Connector

DuraLED combination lamp featuring modern clear lens design. Low power consumption and long life equates to economical running costs. Ideal for trucks and utes.



Rear view showing DT connector that allows application of self-adhesive heat shrink.



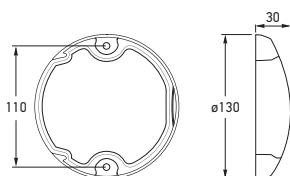
P/N 4963-P
Not included with lamp.

EuroLED® Stop/Rear Position Lamp

EuroLED® stop, rear position lamp with red lens. The use of precision optics enable a single high intensity LED to be used in a commercial vehicle lamp, resulting in low power consumption. Features HELLA Ultra Wide Visibility Optics for significantly improved side visibility.



P/N 2366-BL

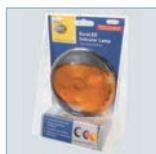
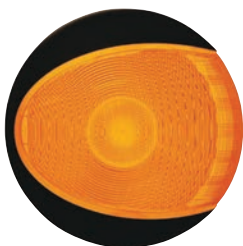


Part Number	2366	
	2366-BL	BLISTER PACK
	2366-BULK	PACK OF 12
Mounting	Two hole surface mount with mounting bushes supplied.	
Voltage	Multivolt™ for optimum brightness at input voltages from 9 to 33 volts.	
Power Consumption	Stop: 2.5W Rear position: 0.5W	
Protection	Reverse polarity and 1500 watt Transient Voltage Suppressor (TVS) IP 6K6 (Protection against dust and high-pressure water jets) IP 6K7 (Protection against dust and temporary water immersion)	
Cable Length	Pre-wired with 2.5m of sheathed multi-core cable.	
Compliance	ADR 49/00 E4 10208 ECE R7/02	

See page 68 for EuroLED® accessories.

EuroLED® Rear Direction Indicator Lamp

EuroLED® rear direction indicator lamp with amber lens and single LED. Features HELLA Ultra Wide Visibility Optics for significantly improved side visibility.



P/N 2133-BL



Part Number	2133	
	2133-BL	BLISTER PACK
	2133-BULK	PACK OF 12
	2133-CS	HCS TECHNOLOGY
Mounting	Two hole surface mount with mounting bushes supplied.	
Voltage	Multivolt™ for optimum brightness at input voltages from 9 to 33 volts.	
Power Consumption	2.5W	
Protection	As per P/N 2366.	
Cable Length	Pre-wired with 2.5m of sheathed multi-core cable.	
Compliance	ADR 6/00: Cat 2a E4 10208 ECE R6/01 ISO 13207-1 (2133-CS only)	

See page 210 for further information on HCS Technology and ISO 13207-1.

EuroLED® Reversing Lamp

EuroLED® reversing lamp with clear lens and single LED.



P/N 1433-BL

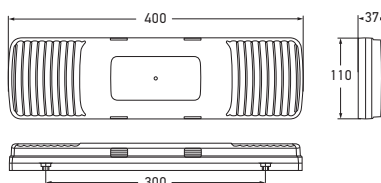


Part Number	1433	
	1433-BL	BLISTER PACK
	1433-BULK	PACK OF 12
Mounting	Two hole surface mount with mounting bushes supplied.	
Voltage	Multivolt™ for optimum brightness at input voltages from 9 to 33 volts.	
Power Consumption	2.5W	
Protection	As per P/N 2366.	
Cable Length	Pre-wired with 2.5m of sheathed multi-core cable.	
Compliance	ADR 1/00 E4 10208 ECE R23/00	

Reversing lamps are not designed for continuous operation.

LED COMBINATION LAMPS

MARKER AND SIGNAL LAMPS



Part Number	2391	HCS TECHNOLOGY				
Mounting	Two bolt surface mount with mounting accessories supplied. Suitable for horizontal mounting.					
Voltage	Multivolt™ for optimum brightness in 12 and 24 volt systems.					
Power Consumption	Stop: 5W Rear position: <2W Rear direction indicator: 6W Reverse: 5W					
Protection	Reverse polarity and 5000 watt Transient Voltage Suppressor (TVS). IP 6K7 (Protection against dust and temporary water immersion) IP 6K9K (Protection against dust and high-pressure/steam jet cleaning)					
Cable Length	Pre-wired with 2.5m of sheathed multi-core cable.					
Spare Part	9.2391.08		Mounting pack			
Compliance	ADR 1/00	ADR 6/00: Cat 2a	ADR 47/00	ADR 49/00	ISO 13207-1	
See page 210 for further information on HCS Technology and ISO 13207-1.						

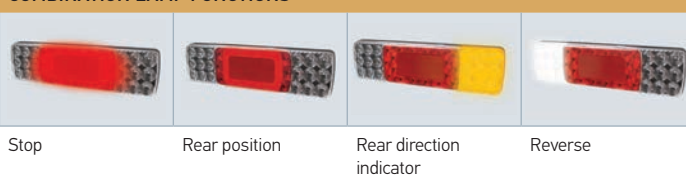
LED Stop/Rear Position/Rear Direction Indicator/Reversing Lamp with Retro Reflector

LED combination lamp with 64cm² red retro reflector. Modern clear lens design with black mounting base. Features HCS Technology with ISO 13207-1 compliance. Shockproof and fully sealed to withstand water submersion and high-pressure washing. Direction indicator optic appears clear until illuminated.



P/N 2391

COMBINATION LAMP FUNCTIONS



Part Number	2392L	LEFT HAND SIDE
	2392R	RIGHT HAND SIDE
Mounting	Two bolt surface mount with mounting accessories supplied. Suitable for horizontal mounting.	
Voltage	Multivolt™ for optimum brightness in 12 and 24 volt systems.	
Power Consumption	Stop: 5W Rear position/number plate: <2W Rear direction indicator: 6W Reverse: 5W	
Protection	Reverse polarity and 5000 watt Transient Voltage Suppressor (TVS). IP 6K7 (Protection against dust and temporary water immersion) IP 6K9K (Protection against dust and high-pressure/steam jet cleaning)	
Cable Length	Pre-wired with 2.5m of sheathed multi-core cable.	
Spare Part	9.2391.08	Mounting pack
Compliance	ADR 1/00 ADR 6/00: Cat 2a ADR 47/00 ADR 48/00 ADR 49/00 ISO 13207-1	
See page 210 for further information on HCS Technology and ISO 13207-1.		

LED Stop/Rear Position/Rear Direction Indicator/Reversing Lamp with Retro Reflector and Number Plate Function

LED combination lamp with 64cm² red retro reflector and number plate function. Modern clear lens design with black mounting base. Features HCS Technology with ISO 13207-1 compliance. Shockproof and fully sealed to withstand water submersion and high-pressure washing. Direction indicator optic appears clear until illuminated.



P/N 2392L

COMBINATION LAMP FUNCTIONS



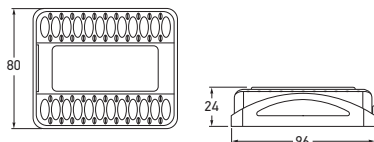
LED Stop/Rear Position/ Rear Direction Indicator Lamp

LED stop, rear position and rear direction indicator lamp with 18cm² red retro reflector. Modern clear lens design with black mounting base. Low power consumption and long life equates to economical running costs. Convenient mounting base with multiple fixing points allow easy fitment to most trailers/vehicles. The lamp is fully sealed against dust and moisture ingress. Optic appears clear until illuminated.



P/N 9.2394.09
Mounting spacer
(not included)

P/N 2394



Part Number	2394			
	2394-BULK			PACK OF 18
	2394-6M			
	2394-6MBULK			PACK OF 10
Mounting	Surface mount with choice of mounting holes. Lamp clips into mounting base. Suitable for horizontal or vertical mounting.			
Voltage	Multivolt™ for optimum brightness in 12 and 24 volt systems.			
Power Consumption	Stop:	2W		
	Rear position:	1W		
	Rear direction indicator:	2W		
Protection	Reverse polarity and transient spike circuit protection. IP 6K7 (Protection against dust and temporary water immersion) IP 6K9K (Protection against dust and high-pressure/steam jet cleaning)			
Cable Length	2394	Pre-wired with 0.5m of sheathed multi-core cable.		
	2394-6M	Pre-wired with 6m of sheathed multi-core cable.		
Spare Parts	9.2394.08	Mounting base		
	9.2394.09	Mounting spacer (not included)		
Lens Material	Grilamid®			
Compliance	ADR 6/00: Cat 2a ECE R6/01	ADR 47/00 ECE R7/02	ADR 49/00 ECE R3/02	E24 5860

TRAILER LAMP FUNCTIONS

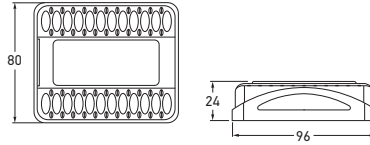



Stop

Rear direction
indicator

Rear position





Part Number	2395				
	2395-BULK				PACK OF 18
	2395-6M				
	2395-6MBULK				PACK OF 10
Mounting	Surface mount with choice of mounting holes. Lamp clips into mounting base. Suitable for horizontal or vertical mounting.				
Voltage	Multivolt™ for optimum brightness in 12 and 24 volt systems.				
Power Consumption	Stop:	2W			
	Rear position/number plate:	1W			
	Rear direction indicator:	2W			
Protection	Reverse polarity and transient spike circuit protection. IP 6K7 (Protection against dust and temporary water immersion) IP 6K9K (Protection against dust and high-pressure/steam jet cleaning)				
Cable Length	2395	Pre-wired with 0.5m of sheathed multi-core cable.			
	2395-6M	Pre-wired with 6m of sheathed multi-core cable.			
Spare Parts	9.2394.08	Mounting base			
	9.2394.09	Mounting spacer (not included)			
Lens Material	Grilamid®				
Compliance	ADR 6/00: Cat 2a ECE R6/01	ADR 47/00 ECE R7/02	ADR 48/00 ECE R3/02	ADR 49/00 ECE R4/00	 5860

LED Stop/Rear Position/Rear Direction Indicator Lamp with Number Plate Function

LED stop, rear position and rear direction indicator lamp with 18cm² red retro reflector and number plate function. Modern clear lens design with black mounting base. Low power consumption and long life equates to economical running costs. Convenient mounting base with multiple fixing points allow easy fitment to most trailers/vehicles. The lamp is fully sealed against dust and moisture ingress. Optic appears clear until illuminated.



P/N 9.2394.08
Mounting spacer
(not included)

P/N 2395

TRAILER LAMP FUNCTIONS



Stop

Rear direction
indicator

Rear position/
Number plate



Part Number	2395-TP		
Lens Material	Grilamid®		
Kit Contents	Each trailer lamp kit contains:		
	1 x 2394	Stop/rear position/rear direction indicator lamp with reflex reflector.	
	1 x 2395	Stop/rear position/rear direction indicator/number plate lamp function with reflex reflector.	
	8 x Connectors (P/N 8231S)	Crimp connectors with heat shrink insulation.	

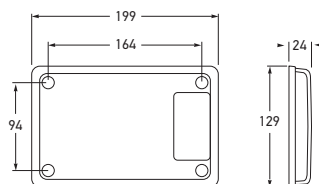
LED Combination Lamp Trailer Kit

LED trailer lamp incorporating a modern clear lens design with an 18cm² red retro reflector. The optic in the lamp appears clear until illuminated.



Jumbo-S LED Stop/ Rear Position Lamp

Jumbo-S LED stop, rear position lamp with inbuilt 23cm² red retro reflector, featuring Enhanced Definition Technology (EDT) for the stop signal function. New low profile design allows surface mounting with no additional housing. Shockproof and fully sealed to withstand temporary water submersion and high-pressure washing.



Part Number	2361
Mounting	Surface mount with mounting gasket and screws supplied. Suitable for horizontal or vertical mounting.
Voltage	Multivolt™ for optimum brightness in 12 and 24 volt systems.
Power Consumption	Stop: 5W Rear position: 1W
Protection	Reverse polarity and 5000 watt Transient Voltage Suppressor (TVS) IP 6K7 (Protection against dust and temporary water immersion) IP 6K9K (Protection against dust and high-pressure/steam jet cleaning)
Cable Length	Pre-wired with 200mm of cable.
Compliance	ADR 47/00 ADR 49/00

See page 69 for Jumbo-S accessories.

Jumbo-S LED Rear Direction Indicator Lamp

Jumbo-S LED rear direction indicator lamp with inbuilt 23cm² red retro reflector. New low profile design allows surface mounting with no additional housing. Features HCS Technology with ISO 13207-1 compliance. Shockproof and fully sealed to withstand temporary water submersion and high-pressure washing.



Part Number	2161	
	2161-CS	HCS TECHNOLOGY
Mounting	Surface mount with mounting gasket and screws supplied. Suitable for horizontal or vertical mounting.	
Voltage	Multivolt™ for optimum brightness in 12 and 24 volt systems.	
Power Consumption	6W	
Protection	Reverse polarity and 5000 watt Transient Voltage Suppressor (TVS) IP 6K7 (Protection against dust and temporary water immersion) IP 6K9K (Protection against dust and high-pressure/steam jet cleaning)	
Cable Length	Pre-wired with 200mm of cable.	
Compliance	ADR 6/00: Cat 2a ADR 47/00 ISO 13207-1 (2161-CS only)	

See page 210 for further information on HCS Technology and ISO 13207-1.

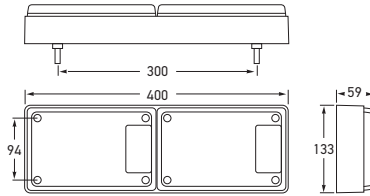
Jumbo-S LED Reversing Lamp

Jumbo-S LED reversing lamp with inbuilt 23cm² red retro reflector. New low profile design allows surface mounting with no additional housing. Shockproof and fully sealed to withstand temporary water submersion and high-pressure washing.



Part Number	1461
Mounting	Surface mount with mounting gasket and screws supplied. Suitable for horizontal or vertical mounting.
Voltage	Multivolt™ for optimum brightness in 12 and 24 volt systems.
Power Consumption	4W
Protection	Reverse polarity and transient spike circuit protection. IP 6K7 (Protection against dust and temporary water immersion) IP 6K9K (Protection against dust and high-pressure/steam jet cleaning)
Cable Length	Pre-wired with 200mm of cable.
Compliance	ADR 1/00 ADR 47/00

Reversing lamps are not designed for continuous operation.



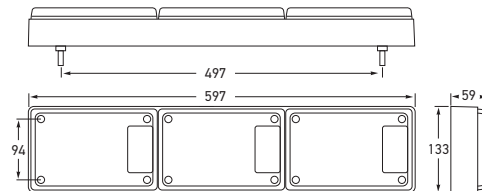
Jumbo-S LED Double Module Stop/Rear Position/Rear Direction Indicator Lamp

Jumbo-S LED stop, rear position, rear direction indicator lamp with 23cm² red retro reflectors. Lamps are pre-assembled and wired into housing for easy installation. Features HCS Technology with ISO 13207-1 compliance. Shockproof and fully sealed to withstand temporary water submersion and high-pressure washing.



Part Number	2429-CS	HCS TECHNOLOGY
Mounting	Surface mount with mounting bolts supplied. Suitable for horizontal or vertical mounting.	
Voltage	Multivolt™ for optimum brightness in 12 and 24 volt systems.	
Power Consumption	Stop: 5W Rear position: 1W Rear direction indicator: 6W	
Protection	Reverse polarity and 5000 watt Transient Voltage Suppressor (TVS) IP 6K7 (Protection against dust and temporary water immersion) IP 6K9K (Protection against dust and high-pressure/steam jet cleaning)	
Cable Length	Pre-wired with 2m of sheathed multi-core cable.	
Compliance	ADR 6/00: Cat 2a ADR 47/00 ADR 49/00 ISO 13207-1	

See page 210 for further information on HCS Technology and ISO 13207-1.
See page 69 for Jumbo-S and Designline accessories.



Jumbo-S LED Triple Module Stop/Rear Position/Rear Direction Indicator Lamp

Jumbo-S LED stop, rear position, rear direction indicator lamp with 23cm² red retro reflectors. Lamps are pre-assembled and wired into housing for easy installation. Features HCS Technology with ISO 13207-1 compliance. Shockproof and fully sealed to withstand temporary water submersion and high-pressure washing.



Part Number	2430-CS	HCS TECHNOLOGY
Mounting	Surface mount with mounting bolts supplied. Suitable for horizontal or vertical mounting.	
Voltage	Multivolt™ for optimum brightness in 12 and 24 volt systems.	
Power Consumption	Stop: 5W x 2 Rear position: 1W x 2 Rear direction indicator: 6W	
Protection	As per P/N 2429-CS.	
Cable Length	Pre-wired with 2m of sheathed multi-core cable.	
Compliance	ADR 6/00: Cat 2a ADR 47/00 ADR 49/00 ISO 13207-1	

See page 210 for further information on HCS Technology and ISO 13207-1.



Part Number	2431-CS	HCS TECHNOLOGY
Mounting	Surface mount with mounting bolts supplied. Suitable for horizontal or vertical mounting.	
Voltage	Multivolt™ for optimum brightness in 12 and 24 volt systems.	
Power Consumption	Stop: 5W Rear position: 1W Rear direction indicator: 6W Reversing: 4W	
Protection	As per P/N 2429-CS.	
Cable Length	Pre-wired with 2m of sheathed multi-core cable.	
Compliance	ADR 1/00 ADR 6/00: Cat 2a ADR 47/00 ADR 49/00 ISO 13207-1	

See page 210 for further information on HCS Technology and ISO 13207-1.

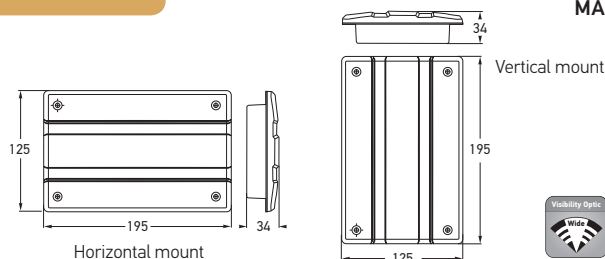
Jumbo-S LED Triple Module Stop/Rear Position/Rear Direction Indicator/Reversing Lamp

Jumbo-S LED stop, rear position, rear direction indicator and reversing lamp with 23cm² red retro reflectors. Lamps are pre-assembled and wired into housing for easy installation. Features HCS Technology with ISO 13207-1 compliance. Shockproof and fully sealed to withstand temporary water submersion and high-pressure washing.



Designline LED Module Stop/Rear Position Lamp

Designline LED Multivolt™ module designed to update existing bulb type Jumbo or Designline lamps. Features HELLA Ultra Wide Visibility Optics for significantly improved side visibility.



Part Number	2332-H24	HORIZONTAL
	2332-V24	VERTICAL
Mounting	Four point recess mount.	
Voltage	Multivolt™ for optimum brightness at input voltages from 9 to 33 volts.	
Power Consumption	Stop: 6W Rear position: 2W	
Protection	Reverse polarity and 5000 watt Transient Voltage Suppressor (TVS).	
Cable Length	Pre-wired with 200mm of cable.	
Compliance	ADR 49/00	

See page 69 for Designline accessories.

Designline LED Module Rear Direction Indicator Lamp

Designline LED Multivolt™ module designed to update existing bulb type Jumbo or Designline lamps. Features HELLA Ultra Wide Visibility Optics for significantly improved side visibility.



Part Number	2146-H24	HORIZONTAL
	2146-V24	VERTICAL
	2146-HCS (Incorporates HCS Technology)	HORIZONTAL
	2146-VCS (Incorporates HCS Technology)	VERTICAL
Mounting	Four point recess mount.	
Voltage	Multivolt™ for optimum brightness at input voltages from 9 to 33 volts.	
Power Consumption	P/Ns 2146-H24/2146-V24: 6W P/Ns 2146-HCS/2146-VCS: 4W	
Protection	Reverse polarity and 5000 watt Transient Voltage Suppressor (TVS).	
Cable Length	Pre-wired with 200mm of cable.	
Compliance	ADR 6/00: Cat 2a ISO 13207-1 (2146-HCS or 2146-VCS only)	

See page 210 for further information on HCS Technology and ISO 13207-1.

Designline LED Module Reversing Lamp

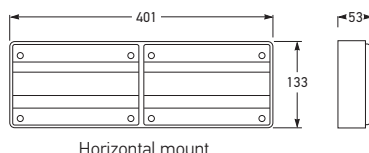
Designline LED Multivolt™ module designed to update existing Designline lamps. The high performance module features 36 High Efficacy LEDs that more than triples the raw lumen output over the standard module. High precision optics ensure ADR compliance by focusing the majority of light down ensuring wide illumination and improved safety when reversing.



Part Number	1446-H	HORIZONTAL
	1447L (High performance - Left hand side)	
	1447R (High performance - Right hand side)	
	1446-V	VERTICAL
Mounting	Four point recess mount.	
Voltage	Multivolt™ for optimum brightness at input voltages from 9 to 33 volts.	
Power Consumption	P/Ns 1446-H/1446-V: 4W P/Ns 1447L/1447R: 7W	
Protection	Reverse polarity and 5000 watt Transient Voltage Suppressor (TVS).	
Cable Length	Pre-wired with 200mm of cable.	
Compliance	ADR 1/00	

Reversing lamps are not designed for continuous operation.

MARKER AND SIGNAL LAMPS

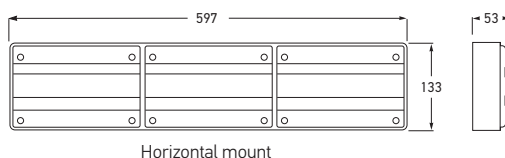


Part Number	2426-H	HORIZONTAL
	2426-V	VERTICAL
Mounting	Two bolt surface mount.	
Voltage	Multivolt™ for optimum brightness at input voltages from 9 to 33 volts.	
Power Consumption	Stop: 6W Rear position: 2W Rear direction indicator: 6W	
Cable Length	Pre-wired with 2m of multi-core cable.	
Spare Part	9.2422.09	Double housing
Compliance	ADR 6/00: Cat 2a	ADR 49/00

See page 69 for Designline accessories.

Designline LED Double Module Stop/Rear Position/Rear Direction Indicator Lamp

Double Designline LED module pre-assembled and wired for easy installation. Features a 2m wiring loom and encapsulated bolts so lamp does not have to be disassembled to mount. Features HELLA Ultra Wide Visibility Optics for significantly improved side visibility.



Part Number	2427-H	HORIZONTAL
	2427-V	VERTICAL
Mounting	Two bolt surface mount.	
Voltage	Multivolt™ for optimum brightness at input voltages from 9 to 33 volts.	
Power Consumption	Stop: 6W x 2 Rear position: 2W x 2 Rear direction indicator: 6W	
Cable Length	Pre-wired with 2m of multi-core cable.	
Spare Part	9.2423.09	Triple housing
Compliance	ADR 6/00: Cat 2a	ADR 49/00

Designline LED Triple Module Stop/Rear Position/Rear Direction Indicator Lamp

Triple Designline LED module pre-assembled and wired for easy installation. Features a 2m wiring loom and encapsulated bolts so lamp does not have to be disassembled to mount. Features HELLA Ultra Wide Visibility Optics for significantly improved side visibility.



Part Number	2428-H	HORIZONTAL
	2428-V	VERTICAL
Mounting	Two bolt surface mount.	
Voltage	Multivolt™ for optimum brightness at input voltages from 9 to 33 volts.	
Power Consumption	Stop: 6W Rear position: 2W Rear direction indicator: 6W Reverse: 4W	
Cable Length	Pre-wired with 2m of multi-core cable.	
Spare Part	9.2423.09	Triple housing
Compliance	ADR 1/00	ADR 6/00: Cat 2a ADR 49/00

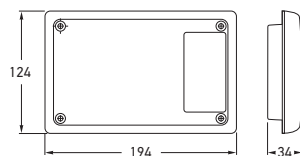
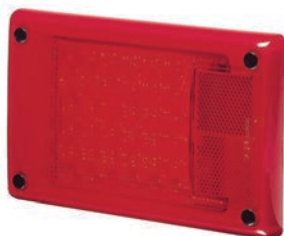
Reversing lamps are not designed for continuous operation.

Designline LED Triple Module Stop/Rear Position/Rear Direction Indicator/Reversing Lamp



Jumbo LED Module Stop/ Rear Position Lamp with Red Retro Reflector

Jumbo LED Multivolt™ module designed to update existing Jumbo or Designline lamps with Enhanced Definition Technology (EDT). Reflector area 33cm².



Part Number	2317
Mounting	Four point recess mount. Suitable for horizontal or vertical mounting.
Voltage	Multivolt™ for optimum brightness at input voltages from 9 to 33 volts.
Power Consumption	Stop: 6W Rear position: 1W
Protection	Reverse polarity and 5000 watt Transient Voltage Suppressor (TVS).
Cable Length	Pre-wired with 200mm of cable.
Compliance	ADR 47/00 ADR 49/00

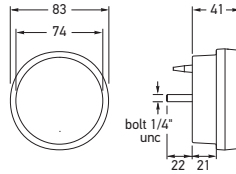
See page 69 for Designline accessories.

Jumbo LED Module Rear Direction Indicator Lamp with Red Retro Reflector

Jumbo LED Multivolt™ module designed to update existing Jumbo or Designline lamps. Reflector area 33cm².



Part Number	2138
Mounting	Four point recess mount. Suitable for horizontal or vertical mounting.
Voltage	Multivolt™ for optimum brightness at input voltages from 9 to 33 volts.
Power Consumption	9W
Protection	Reverse polarity and 5000 watt Transient Voltage Suppressor (TVS).
Cable Length	Pre-wired with 200mm of cable.
Compliance	ADR 6/00: Cat 2a ADR 47/00



83mm Round LED Safety DayLights™/Front Position/ Front Direction Indicator Lamp

This LED combination lamp features an integrated Safety DayLight™, front position indicator and front position function. The lamp features a traditional round lens that illuminates with a distinctive ring of white LEDs when used as a Safety DayLight™. This lamp eliminates the need for installation of multiple lamps.

Part Number	2108-GMD			12 VOLT
	2108-GMD24V			24 VOLT
Mounting	Flush mount. Single bolt 1/4" stainless UNC thread. Nut and washer supplied.			
Power Consumption		P/N 2108-GMD	P/N 2108-GMD24V	
	Safety DayLights™:	4W	4W	
	Front position:	1W	1W	
	Front direction indicator:	3W	4W	
Protection	Reverse polarity and transient spike circuit protection. IP 6K7 (Protection against dust and temporary water immersion) IP 6K9K (Protection against dust and high-pressure/steam jet cleaning)			
Cable Length	Pre-wired with 2.5m of sheathed multi-core cable.			
Lens Material	Grilamid®			
Compliance	ADR 6/00: Cat 1a ECE R6/01	ADR 49/00 ECE R7/02	ADR 76/00 ECE R87/00	E24 5854

See page 69 for mounting accessories.



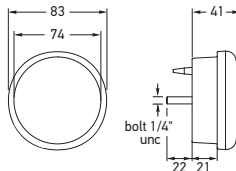
83MM LAMP FUNCTIONS



LED Safety DayLights™

Front position

Front direction indicator



83mm Round LED Front Direction Indicator Lamp

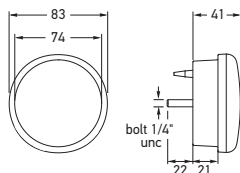
Compact, low profile LED front direction indicator fitted with amber polycarbonate lens. Fully sealed to withstand high-pressure washing.

Part Number	2107
Mounting	Flush mount. Single bolt 1/4" stainless UNC thread. Nut and washer supplied.
Voltage	Multivolt™ for optimum brightness at input voltages from 9 to 33 volts.
Power Consumption	4W
Protection	Reverse polarity and 5000 watt Transient Voltage Suppressor (TVS) IP 6K7 (Protection against dust and temporary water immersion) IP 6K9K (Protection against dust and high-pressure/steam jet cleaning)
Cable Length	Pre-wired with 2.5m of sheathed multi-core cable.
Compliance	ADR 6/00: Cat 1a



83mm Round LED Stop/Rear Position Lamp

83mm diameter LED stop, rear position lamp with single bolt mount, featuring Enhanced Definition Technology (EDT). Features HELLA Ultra Wide Visibility Optics for significantly improved side visibility.



P/N 2390 Rear position P/N 2390-BL

Part Number	2390	
	2390-BL	BLISTER PACK
	2390-BULK	PACK OF 10
Mounting	Flush mount. Single bolt 1/4" stainless UNC thread. Nut and washer supplied.	
Voltage	Multivolt™ for optimum brightness at input voltages from 9 to 33 volts.	
Power Consumption	Stop: 3W Rear position: 1W	
Protection	Reverse polarity and 5000 watt Transient Voltage Suppressor (TVS) IP 6K7 (Protection against dust and temporary water immersion) IP 6K9K (Protection against dust and high-pressure/steam jet cleaning)	
Cable Length	Pre-wired with 2.5m of sheathed multi-core cable.	
Compliance	ADR 49/00 E4 11391 ECE R7/02	

See page 69 for mounting accessories.

83mm Round LED Rear Direction Indicator Lamp

83mm diameter LED rear direction indicator lamp with single bolt mount. Features HELLA Ultra Wide Visibility Optics for significantly improved side visibility.



P/N 2130-BL

Part Number	2130	
	2130-BL	BLISTER PACK
	2130-BULK	PACK OF 10
Mounting	Flush mount. Single bolt 1/4" stainless UNC thread. Nut and washer supplied.	
Voltage	Multivolt™ for optimum brightness at input voltages from 9 to 33 volts.	
Power Consumption	2W	
Protection	As per P/N 2390.	
Cable Length	Pre-wired with 2.5m of sheathed multi-core cable.	
Compliance	ADR 6/00: Cat 2a E4 11391 ECE R6/01	

Contact HELLA for 24 volt HCS version.

83mm Round LED Reversing Lamp

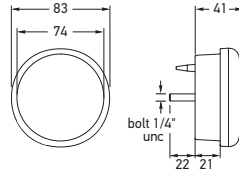
83mm diameter LED reversing lamp with single bolt mount.



P/N 1490-BL

Part Number	1490	
	1490-BL	BLISTER PACK
	1490-BULK	PACK OF 10
Mounting	Flush Mount. Single bolt 1/4" stainless UNC thread. Nut and washer supplied.	
Voltage	Multivolt™ for optimum brightness at input voltages from 9 to 33 volts.	
Power Consumption	4W	
Protection	As per P/N 2390.	
Cable Length	Pre-wired with 2.5m of sheathed multi-core cable.	
Compliance	ADR 1/00 E4 11391 ECE R23/00	

Reversing lamps are not designed for continuous operation.



83mm Round LED Stop/ Rear Position/Rear Direction Indicator Lamp

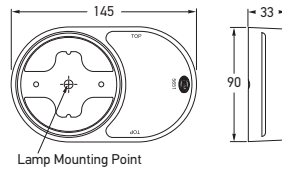
83mm diameter LED stop, rear position and rear direction indicator lamp with single bolt mount.

Part Number	2399	
	2399-BL	BLISTER PACK
	2399-BULK	PACK OF 10
Mounting	Flush mount. Single bolt 1/4" stainless UNC thread. Nut and washer supplied.	
Voltage	Multivolt™ for optimum brightness in 12 and 24 volt systems.	
Power Consumption	Stop: 3W Rear position: 1W Rear direction indicator: 3W	
Protection	Reverse polarity and 5000 watt Transient Voltage Suppressor (TVS) IP 6K7 (Protection against dust and temporary water immersion) IP 6K9K (Protection against dust and high-pressure/steam jet cleaning)	
Cable Length	Pre-wired with 2.5m of sheathed multi-core cable. Bulk pack pre-wired with 6m of sheathed multi-core cable.	
Compliance	ADR 6/00: Cat 2a ECE R6/01	ADR 49/00 ECE R7/02 E9 1538

Contact HELLA for 24 volt HCS version. See page 69 for mounting accessories.



P/N 2399-BL



Red Retro Reflector Base

Red retro reflector to suit 83mm round lamps.
Reflector area 31.7cm².

Part Number	2934H	HORIZONTAL
	2934V	VERTICAL
Mounting	Utilises bolt mount from 83mm round lamps.	
Compliance	ADR 47/00	



LED Lighting Trailer Conversion Kit

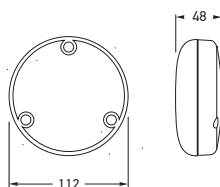
A complete Fit and Forget solution for small trailers.

Part Number	2399-TP	
Kit Contents	Each trailer lamp kit contains: 2 x 2399 Combination stop/rear position and rear direction indicator lamp with 6m cable 2 x 2934H Red retro reflector base – horizontal mount 1 x 2559 LED number plate lamp 1 x 4921 7 pole flat plug	



110mm Round LED Front Direction Indicator Lamp

LED front direction indicator specifically designed for trucks, buses and motor homes.



Part Number	2135LED
Mounting	Mount only with lens engraving "TOP" located correctly.
Voltage	Multivolt™ for optimum brightness at input voltages from 9 to 33 volts.
Power Consumption	4W
Protection	Reverse polarity and 1500 watt Transient Voltage Suppressor (TVS) IP 6K6 (Protection against dust and high-pressure water jets) IP 6K7 (Protection against dust and temporary water immersion)
Cable Length	Pre-wired with 200mm of cable.
Compliance	ADR 6/00: Cat 1a

110mm Round LED Front Position/ Front Direction Indicator Lamp with Clear Lens

LED front direction indicator and front position lamp specifically designed for commercial transport, buses, caravans and trailers. Direction indicator optic appears clear until illuminated.



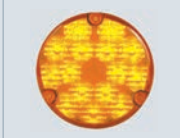
Part Number	2131-CS		HCS TECHNOLOGY
Mounting	Mount only with lens engraving "TOP" located correctly.		
Voltage	Multivolt™ for optimum brightness at input voltages from 9 to 33 volts.		
Power Consumption	Front position:	<1W	
	Front direction indicator:	3W	
Protection	Reverse polarity and 5000 watt Transient Voltage Suppressor (TVS) IP 6K7 (Protection against dust and temporary water immersion) IP 6K9K (Protection against dust and high-pressure/steam jet cleaning)		
Cable Length	Pre-wired with 200mm of cable.		
Compliance	ADR 6/00: Cat 1a	ADR 49/00	ECE R6/01
	ECE R7/02	E24 5851	ISO 13207-1

See page 210 for further information on HCS Technology and ISO 13207-1.

LAMP FUNCTIONS



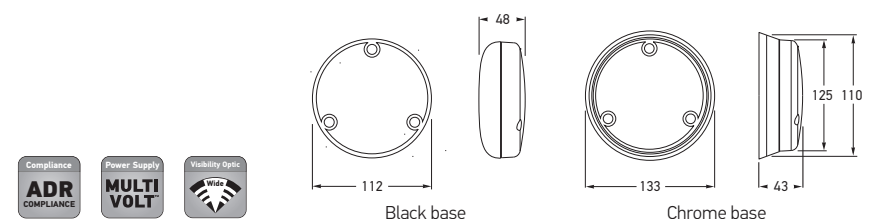
Front position



Direction indicator



MARKER AND SIGNAL LAMPS



Part Number	2359	CHROME BASE
	2367	BLACK BASE
	2365	MODULE
Mounting	Mount only with lens engraving "TOP" located correctly.	
Voltage	Multivolt™ for optimum brightness at input voltages from 9 to 33 volts.	
Power Consumption	Stop: 3W Rear position: 1W	
Protection	Reverse polarity and 1500 watt Transient Voltage Suppressor (TVS) IP 6K6 (Protection against dust and high-pressure water jets) IP 6K7 (Protection against dust and temporary water immersion)	
Cable Length	Pre-wired with 200mm of cable.	
Compliance	ADR 49/00	

110mm Round LED Stop/Rear Position Lamp

110mm round LED stop, rear position lamp specifically designed for commercial transport, buses, caravans and trailers. Features low power consumption, impact resistant acrylic lens and HELLA's Ultra Wide Visibility Optics for significantly improved side visibility.



P/N 2367

P/N 2365



Part Number	2159	CHROME BASE
	2167	BLACK BASE
	2165	MODULE
Mounting	Mount only with lens engraving "TOP" located correctly.	
Voltage	Multivolt™ for optimum brightness at input voltages from 9 to 33 volts.	
Power Consumption	3W	
Protection	As per P/N 2359.	
Cable Length	Pre-wired with 200mm of cable.	
Compliance	ADR 6/00: Cat 2a	

110mm Round LED Rear Direction Indicator Lamp



P/N 2167

P/N 2165



Part Number	1459	CHROME BASE
	1467	BLACK BASE
	1465	MODULE
Mounting	Mount only with lens engraving "TOP" located correctly.	
Voltage	Multivolt™ for optimum brightness at input voltages from 9 to 33 volts.	
Power Consumption	5W	
Protection	As per P/N 2359.	
Cable Length	Pre-wired with 200mm of cable.	
Compliance	ADR 1/00	
Reversing lamps are not designed for continuous operation.		

110mm Round LED Reversing Lamp



P/N 1467

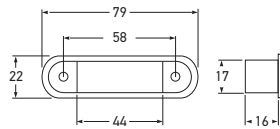
P/N 1465

LED Flush Mount Front Position/ End Outline Lamp

White front position or front end outline
LED lamp (FEOL).



P/N 2055



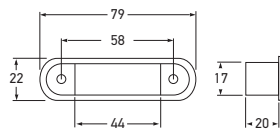
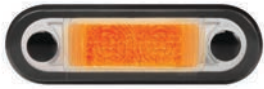
Part Number	2055		
	2055-BULK		PACK OF 4
Mounting	Two hole recess mount. Suitable for horizontal or vertical mounting.		
Voltage	Multivolt™ for optimum brightness in 12 and 24 volt systems.		
Power Consumption	<1W		
Protection	Reverse polarity protection. IP 6K6 (Protection against dust and high-pressure water jets) IP 6K7 (Protection against dust and temporary water immersion)		
Cable Length	Pre-wired with 0.5m of sheathed multi-core cable. Bulk pack pre-wired with 2.5m of sheathed multi-core cable.		
Compliance	ADR 49/00	E4 0054	ECE R7/02

See page 70 for spare parts and accessories.

See page 70 for spare parts and accessories.

LED Flush Mount Front End Outline Lamp

Amber front end outline LED lamp (FEOL)
for trailers only. Optic appears clear
until illuminated.

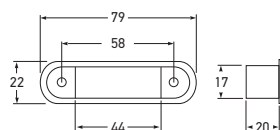


Part Number	2056	
	2056-BULK	PACK OF 4
Mounting	Suitable for horizontal mounting.	
Compliance	ADR 49/00	
Other specifications as per P/N 2055. See page 70 for spare parts and accessories.		

Other specifications as per P/N 2055. See page 70 for spare parts and accessories.

LED Flush Mount Cab Marker Lamp

Amber cab marker LED lamp. Optic appears
clear until illuminated.

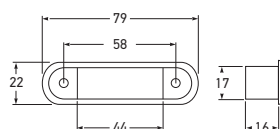


Part Number	2057	
	2057-BULK	PACK OF 4
Mounting	Suitable for horizontal mounting.	
Compliance	ADR 45/01	
Other specifications as per P/N 2055. See page 70 for spare parts and accessories.		

Other specifications as per P/N 2055. See page 70 for spare parts and accessories.

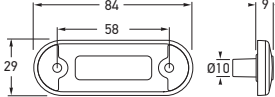
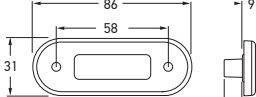
LED Flush Mount Rear Position/ End Outline Lamp

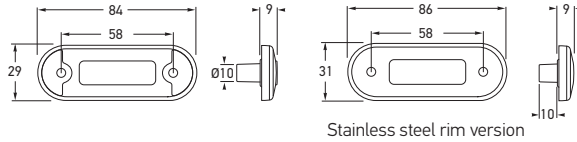
Red rear end outline lamp (REOL) or rear position
LED lamp. Optic appears clear until illuminated.



Part Number	2308		
	2308-BULK	PACK OF 4	
Compliance	ADR 49/00	E4 02 7597	ECE R7/02

Other specifications as per P/N 2055. See page 70 for spare parts and accessories.

<div>Compliance</div> <div>ADR</div> <div>COMPLIANCE</div>	<div>Power Supply</div> <div>MULTI</div> <div>VOLT</div>	<div>Lens Material</div> <div>GMD</div>		
Part Number	2059			
	2059-BULK (Pack of 16)			
	2059S			POLISHED STAINLESS STEEL RIM
	2059S-BULK (Pack of 16)			
Mounting	Surface mount. Suitable for horizontal or vertical mounting.			
Voltage	Multivolt™ for optimum brightness in 12 and 24 volt systems.			
Power Consumption	<0.5W			
Protection	Reverse polarity protection. IP 6K7 (Protection against dust and temporary water immersion) IP 6K9K (Protection against dust and high-pressure/steam jet cleaning)			
Cable Length	Pre-wired with 0.5m of sheathed multi-core cable. Bulk pack pre-wired with 2.5m of sheathed multi-core cable.			
Spare Parts	9.2310.09-BULK 95968500		Black screw caps (Pack of 4) Stainless steel rim - Polished	
Lens Material	Grilamid®			
Compliance	ADR 49/00			
See page 67 for DuraLED® marker lamp accessories.				



DuraLED® Flush Mount Front Position/End Outline Lamp

White surface mount front position or front end outline LED lamp (FEOL) with optional stainless steel rim. Featuring a low profile ultra durable Grilamid® nylon lens for extreme impact, UV, chemical and stress resistance. Optic appears clear until illuminated.



P/N 2059S

P/N 2059



Ultra slim design
Featuring a thickness of just 9mm

Compliance

ADR COMPLIANCE

Power Supply

MULTI VOLT

Lens Material

GMD

Part Number	2060	
	2060-BULK (Pack of 16)	
	2060S	POLISHED STAINLESS STEEL RIM
	2060S-BULK (Pack of 16)	

Other specifications as per P/N 2059.



P/N 2060S

DuraLED® Flush Mount Front End Outline Lamp

Amber surface mount front end outline LED lamp (FEOL) with optional stainless steel rim. Featuring a low profile ultra durable Grilamid® nylon lens for extreme impact, UV, chemical and stress resistance. Optic appears clear until illuminated.



Compliance

ADR COMPLIANCE

Power Supply

MULTI VOLT

Lens Material

GMD

Part Number	2310	
	2310-BULK (Pack of 16)	
	2310S	POLISHED STAINLESS STEEL RIM
	2310S-BULK (Pack of 16)	

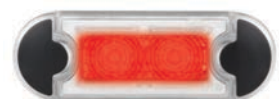
Other specifications as per P/N 2059.



P/N 2310S

DuraLED® Flush Mount Rear Position/End Outline Lamp

Red surface mount rear position or rear end outline LED lamp (REOL) with optional stainless steel rim. Featuring a low profile ultra durable Grilamid® nylon lens for extreme impact, UV, chemical and stress resistance. Optic appears clear until illuminated.

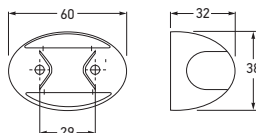


DuraLED® Side Marker Lamp

Red/amber side marker LED lamp.
Optic appears clear until illuminated.



P/N 2053



Part Number	2053	
	2053-BULK	PACK OF 4
Mounting	Surface mount.	
Voltage	Multivolt™ for optimum brightness in 12 and 24 volt systems.	
Power Consumption	<1W	
Protection	Reverse polarity protection. IP 6K6 (Protection against dust and high-pressure water jets) IP 6K7 (Protection against dust and temporary water immersion)	
Cable Length	Pre-wired with 0.5m of sheathed multi-core cable. Bulk pack pre-wired with 2.5m of sheathed multi-core cable.	
Spare Part	9.2053.08	Black nylon housing
Compliance	ADR 45/01	
See page 67 for DuraLED® marker lamp accessories.		

DuraLED® Side Marker Lamp

Red/amber ultra high impact resistant side marker LED lamp featuring Grilamid® lens and nylon housing. Optic appears clear until illuminated.



Part Number	2053-GMD	
	2053-GMDBULK	PACK OF 4
Mounting	Surface mount.	
Voltage	Multivolt™ for optimum brightness in 12 and 24 volt systems.	
Power Consumption	<1W	
Protection	As per P/N 2053.	
Cable Length	Pre-wired with 0.5m of sheathed multi-core cable. Bulk pack pre-wired with 2.5m of sheathed multi-core cable.	
Spare Part	9.2053.08	Black nylon housing
Lens Material	Grilamid®	
Compliance	ADR 45/01	

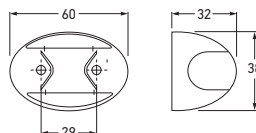
DuraLED® Cab Marker/Supplementary Side Direction Indicator Lamp (Cat. 5)

Amber cab marker or supplementary side indicator LED lamp. Optic appears clear until illuminated.



Part Number	2026	
	2026-BULK (Pack of 4)	PACK OF 4
Mounting	Surface mount.	
Voltage	Multivolt™ for optimum brightness in 12 and 24 volt systems.	
Power Consumption	<1W	
Protection	As per P/N 2053.	
Cable Length	Pre-wired with 0.5m of sheathed multi-core cable. Bulk pack pre-wired with 2.5m of sheathed multi-core cable.	
Spare Part	9.2053.08	Black nylon housing
Compliance	ADR 6/00: Cat 5	ADR 45/01
See page 59 for function category details.		

MARKER AND SIGNAL



DuraLED® Front End Outline Lamp

Amber ultra high impact resistant front end outline (FEOL) LED lamp for trailers featuring Grilamid® lens and nylon housing. Optic appears clear until illuminated.



Part Number	2051	
	2051-BULK	PACK OF 4
Mounting	Surface mount. Suitable for horizontal mounting.	
Voltage	Multivolt™ for optimum brightness in 12 and 24 volt systems.	
Power Consumption	<1W	
Protection	Reverse polarity protection. IP 6K6 (Protection against dust and high-pressure water jets) IP 6K7 (Protection against dust and temporary water immersion)	
Cable Length	Pre-wired with 0.5m of sheathed multi-core cable. Bulk pack pre-wired with 2.5m of sheathed multi-core cable.	
Spare Part	9.2053.08	Black nylon housing
Lens Material	Grilamid®	
Compliance	ADR 49/00	

See page 67 for DuraLED® marker lamp accessories.

DuraLED® Front Position/
End Outline Lamp

White ultra high impact resistant front end outline (FEOL) or front position LED lamp featuring Grilamid® lens and nylon housing.



Part Number	2054	
	2054-BULK	PACK OF 4
Mounting	Surface mount. Suitable for horizontal mounting.	
Voltage	Multivolt™ for optimum brightness in 12 and 24 volt systems.	
Power Consumption	<1W	
Protection	As per P/N 2051.	
Cable Length	Pre-wired with 0.5m of sheathed multi-core cable. Bulk pack pre-wired with 2.5m of sheathed multi-core cable.	
Spare Part	9.2053.08	Black nylon housing
Lens Material	Grilamid®	
Compliance	ADR 49/00	

DuraLED® Rear Position/
End Outline Lamp

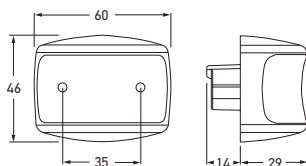
Red ultra high impact resistant rear end outline (REOL) or rear position LED lamp featuring Grilamid® lens and nylon housing. Optic appears clear until illuminated.



Part Number	2307	
	2307-BULK	PACK OF 4
Mounting	Surface mount. Suitable for horizontal mounting.	
Voltage	Multivolt™ for optimum brightness in 12 and 24 volt systems.	
Power Consumption	<1W	
Protection	As per P/N 2051.	
Cable Length	Pre-wired with 0.5m of sheathed multi-core cable. Bulk pack pre-wired with 2.5m of sheathed multi-core cable.	
Spare Part	9.2053.08	Black nylon housing
Lens Material	Grilamid®	
Compliance	ADR 49/00	

DuraLED® Heavy Duty Side Marker Lamp with DT Connector - Red/Amber

Heavy duty red/amber LED side marker lamp with DT connector and nylon housing. Featuring ultra durable Grilamid® nylon lens for extreme impact, UV, chemical and stress resistance. Optic appears clear until illuminated.



Rear view showing DT connector that allows application of self-adhesive heat shrink.



P/N 4960-P
Not included with lamp.

Part Number	2073	
	2073-BULK	PACK OF 8
Mounting	Surface mount. Suitable for horizontal mounting.	
Voltage	Multivolt™ for optimum brightness in 12 and 24 volt systems.	
Power Consumption	<1W	
Protection	Reverse polarity protection. Fully sealed against dust, high-pressure washing and temporary water immersion.	
Spare Parts	4960-P 9.2073.09	2 pole DT plug, wedge and 2 contacts. Black nylon housing
Lens Material	Grilamid®	
Compliance	ADR 45/01	

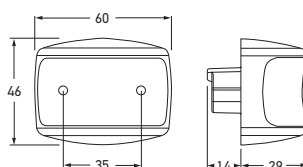
DuraLED® Heavy Duty Cab Marker/ Supplementary Side Direction Indicator Lamp with DT Connector

Heavy duty amber LED cab marker or supplementary side direction indicator lamp with DT connector and nylon housing. Featuring ultra durable Grilamid® nylon lens for extreme impact, UV, chemical and stress resistance. Optic appears clear until illuminated.



Part Number	2076	
	2076-BULK	PACK OF 8
Mounting	Surface mount. Suitable for horizontal mounting.	
Voltage	Multivolt™ for optimum brightness in 12 and 24 volt systems.	
Power Consumption	<1W	
Protection	Reverse polarity protection. Fully sealed against dust, high-pressure washing and temporary water immersion.	
Spare Parts	4960-P 9.2073.09	2 pole DT plug, wedge and 2 contacts. Black nylon housing
Lens Material	Grilamid®	
Compliance	ADR 45/01	ADR 6/00: Cat 5

MARKER AND SIGNAL



Part Number	2071	
	2071-BULK	PACK OF 8
Mounting	Surface mount. Suitable for horizontal mounting.	
Voltage	Multivolt™ for optimum brightness in 12 and 24 volt systems.	
Power Consumption	<1W	
Protection	Reverse polarity protection. Fully sealed against dust, high-pressure washing and temporary water immersion.	
Spare Parts	4960-P 9.2073.09	2 pole DT plug, wedge and 2 contacts. Black nylon housing
Lens Material	Grilamid®	
Compliance	ADR 49/00	

DuraLED® Heavy Duty Front End Outline Lamp with DT Connector

Heavy duty amber front end outline LED lamp (FEOL) with DT connector and nylon housing. Featuring ultra durable Grilamid® nylon lens for extreme impact, UV, chemical and stress resistance. Optic appears clear until illuminated.



Part Number	2074	
	2074-BULK	PACK OF 8
Mounting	Surface mount. Suitable for horizontal mounting.	
Voltage	Multivolt™ for optimum brightness in 12 and 24 volt systems.	
Power Consumption	<1W	
Protection	Reverse polarity protection. Fully sealed against dust, high-pressure washing and temporary water immersion.	
Spare Parts	4960-P 9.2073.09	2 pole DT plug, wedge and 2 contacts. Black nylon housing
Lens Material	Grilamid®	
Compliance	ADR 49/00	

DuraLED® Heavy Duty Front Position/End Outline Lamp with DT Connector

Heavy duty white front position or end outline LED lamp (FEOL) with DT connector and nylon housing. Featuring ultra durable Grilamid® nylon lens for extreme impact, UV, chemical and stress resistance. Optic appears clear until illuminated.



Part Number	2312	
	2312-BULK	PACK OF 8
Mounting	Surface mount. Suitable for horizontal mounting.	
Voltage	Multivolt™ for optimum brightness in 12 and 24 volt systems.	
Power Consumption	<1W	
Protection	Reverse polarity protection. Fully sealed against dust, high-pressure washing and temporary water immersion.	
Spare Parts	4960-P 9.2073.09	2 pole DT plug, wedge and 2 contacts. Black nylon housing
Lens Material	Grilamid®	
Compliance	ADR 49/00	

DuraLED® Heavy Duty Rear Position/End Outline Lamp with DT Connector

Heavy duty red rear position or end outline LED lamp (REOL) with DT connector and nylon housing. Featuring ultra durable Grilamid® nylon lens for extreme impact, UV, chemical and stress resistance. Optic appears clear until illuminated.



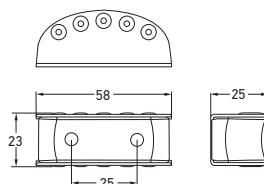
DuraLED® Heavy Duty Side Marker Lamp - Red/Amber

Heavy duty red/amber LED side marker lamp with stainless steel housing. Featuring ultra durable Grilamid® nylon lens for extreme impact, UV, chemical and stress resistance. Optic appears clear until illuminated.



P/N 2058

P/N 2058P



Part Number	2058		MATT FINISH
	2058-BULK (Pack of 15)		
	2058P		POLISHED FINISH
	2058P-BULK (Pack of 15)		
Mounting	Surface mount. Suitable for horizontal mounting.		
Voltage	Multivolt™ for optimum brightness in 12 and 24 volt systems.		
Power Consumption	<1W		
Protection	Reverse polarity protection. Fully sealed against dust, high-pressure washing and temporary water immersion.		
Cable Length	Pre-wired with 0.5m of sheathed multi-core cable. Bulk pack pre-wired with 2.5m of sheathed multi-core cable.		
Spare Parts	9.2058.09 9.2058.10	Stainless steel housing Polished stainless steel housing	
Lens Material	Grilamid®		
Compliance	ADR 45/01		

The industrial polishing process utilised on the housings may not always be 100% blemish free.

DuraLED® Heavy Duty Cab Marker/ Supplementary Side Direction Indicator Lamp

Heavy duty LED cab marker or supplementary side direction indicator lamp with stainless steel housing. Featuring ultra durable Grilamid® nylon lens for extreme impact, UV, chemical and stress resistance. Optic appears clear until illuminated.



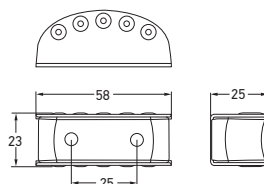
P/N 2058



Part Number	2027		MATT FINISH
	2027-BULK (Pack of 15)		
	2027P		POLISHED FINISH
	2027P-BULK (Pack of 15)		
Mounting	Surface mount. Suitable for horizontal mounting.		
Voltage	Multivolt™ for optimum brightness in 12 and 24 volt systems.		
Power Consumption	<1W		
Protection	Reverse polarity protection. Fully sealed against dust, high-pressure washing and temporary water immersion.		
Cable Length	Pre-wired with 0.5m of sheathed multi-core cable. Bulk pack pre-wired with 2.5m of sheathed multi-core cable.		
Spare Parts	9.2058.09 9.2058.10	Stainless steel housing Polished stainless steel housing	
Lens Material	Grilamid®		
Compliance	ADR 45/01	ADR 6/00: Cat 5	

The industrial polishing process utilised on the housings may not always be 100% blemish free.

MARKER AND SIGNAL

**DuraLED® Heavy Duty Front Position/End Outline Lamp**

Heavy duty white front position/end outline LED lamp (FEOL) with stainless steel housing. Featuring ultra durable Grilamid® nylon lens for extreme impact, UV, chemical and stress resistance. Optic appears clear until illuminated.



Part Number	2061	MATT FINISH
	2061-BULK (Pack of 15)	
	2061P	
	2061P-BULK (Pack of 15)	POLISHED FINISH
Mounting	Surface mount. Suitable for horizontal mounting.	
Voltage	Multivolt™ for optimum brightness in 12 and 24 volt systems.	
Power Consumption	<1W	
Protection	Reverse polarity protection. Fully sealed against dust, high-pressure washing and temporary water immersion.	
Cable Length	Pre-wired with 0.5m of sheathed multi-core cable. Bulk pack pre-wired with 2.5m of sheathed multi-core cable.	
Spare Parts	9.2058.09	Stainless steel housing
	9.2058.10	Polished stainless steel housing
Lens Material	Grilamid®	
Compliance	ADR 49/00	

The industrial polishing process utilised on the housings may not always be 100% blemish free.

**DuraLED® Heavy Duty Front End Outline Lamp**

Heavy duty amber front end outline LED lamp (FEOL) with stainless steel housing. Featuring ultra durable Grilamid® nylon lens for extreme impact, UV, chemical and stress resistance. Optic appears clear until illuminated.



Part Number	2062	MATT FINISH
	2062-BULK (Pack of 15)	
	2062P	
	2062P-BULK (Pack of 15)	POLISHED FINISH

Other specifications as per P/N 2061.

**DuraLED® Heavy Duty Rear Position/End Outline Lamp**

Heavy duty red rear position/end outline LED lamp (REOL) with stainless steel housing. Featuring ultra durable Grilamid® nylon lens for extreme impact, UV, chemical and stress resistance. Optic appears clear until illuminated.



Part Number	2311	MATT FINISH
	2311-BULK (Pack of 15)	
	2311P	
	2311P-BULK (Pack of 15)	POLISHED FINISH

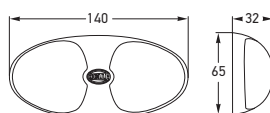
Other specifications as per P/N 2061.

DuraLED® Supplementary Side Direction Indicator Lamp (Cat. 5)

LED supplementary side direction indicator featuring amber impact resistant polycarbonate lens and HELLA's Ultra Wide Visibility Optics for significantly improved side visibility. See page 59 for function category details.



P/N 2031-BL



Part Number	2031	
	2031-BL	BLISTER PACK
Mounting	Two hole surface mount with mounting bushes supplied. Suitable for horizontal mounting.	
Voltage	Multivolt™ for optimum brightness in 12 and 24 volt systems.	
Power Consumption	3W	
Protection	Reverse polarity and 5000 watt Transient Voltage Suppressor (TVS) Fully sealed against dust, high-pressure washing and temporary water immersion.	
Cable Length	Pre-wired with 2.5m of sheathed multi-core cable.	
Projected Luminous Area	51cm²	
Spare Part	9.2366.17	Screw boss kit
Lens Material	Polycarbonate.	
Compliance	ADR 6/00: Cat 5	

DuraLED® Side Marker Lamp with Clear Lens

LED side marker featuring clear impact resistant polycarbonate lens and HELLA's Ultra Wide Visibility Optics for significantly improved side visibility. Optic appears clear until illuminated.



P/N 2033-BL



Part Number	2033	
	2033-BL	BLISTER PACK
Mounting	Two hole surface mount with mounting bushes supplied.	
Voltage	Multivolt™ for optimum brightness in 12 and 24 volt systems.	
Power Consumption	3W	
Protection	Reverse polarity and 5000 watt Transient Voltage Suppressor (TVS) Fully sealed against dust, high-pressure washing and temporary water immersion.	
Cable Length	Pre-wired with 2.5m of sheathed multi-core cable.	
Spare Part	9.2366.17	Screw boss kit
Lens Material	Polycarbonate.	
Compliance	ADR 45/01	

DuraLED® Rear Position/End Outline Lamp

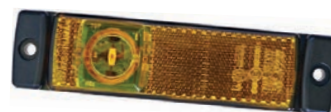
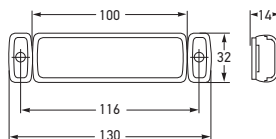
LED rear position/rear end outline lamp featuring red impact resistant polycarbonate lens and HELLA's Ultra Wide Visibility Optics for significantly improved side visibility.



Part Number	2309	
Mounting	Two hole surface mount with mounting bushes supplied. Suitable for horizontal mounting.	
Voltage	Multivolt™ for optimum brightness in 12 and 24 volt systems.	
Power Consumption	3W	
Protection	Reverse polarity and 5000 watt Transient Voltage Suppressor (TVS) Fully sealed against dust, high-pressure washing and temporary water immersion.	
Cable Length	Pre-wired with 2.5m of sheathed multi-core cable.	
Spare Part	9.2366.17	Screw boss kit
Lens Material	Polycarbonate.	
Compliance	ADR 49/00	

LED Side Marker Lamp - Amber

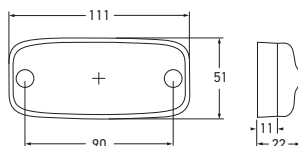
Side marker lamp with reflex reflector for horizontal mounting. Reverse polarity protection.



Part Number	2PS 008 645-011			12 VOLT
	2PS 008 645-001			24 VOLT
Power Consumption	12V 24V	0.5W 1W		
Cable Length	Pre-wired with 1.5m of sheathed multi-core cable.			
Compliance	(Ei) 1395	(Ei) 1396	ECE R3/02	ECE R91/00

LED Side Marker Lamp - Amber

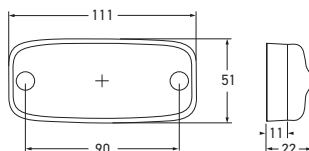
LED side marker with inbuilt amber retro reflector. Bridge circuit for protection against polarity reversal.



Part Number	2PS 963 639-007			12 VOLT
	2PS 963 639-017			24 VOLT
Power Consumption	12V	0.7W		
	24V	1.3W		
Cable Length	Pre-wired with 0.5m of sheathed multi-core cable.			
Compliance	(E17) 9605	ECE R3/02	ECE R91/00	

LED Rear Position Lamp - Red

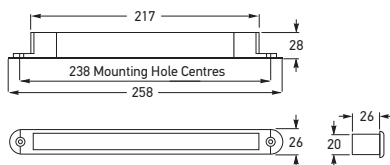
LED rear position lamp with inbuilt red retro reflector. Bridge circuit for protection against polarity reversal.



Part Number	2305		12 VOLT
	2306		24 VOLT
Power Consumption	12V 24V	0.5W 1W	
Cable Length	Pre-wired with 5m of sheathed multi-core cable.		
Compliance	(E17) 9808	ECE R3/02	ECE R7/02

LED Stop/Rear Position Lamp

Red LED strip lamp suitable for coaches and buses, featuring Enhanced Definition Technology (EDT).



Part Number	2334-12V	12 VOLT
	2334-24V	24 VOLT
Mounting	Two hole recess mount. Suitable for horizontal or vertical mounting.	
Power Consumption	Stop: 2W Rear position: 0.3W	
Protection	Reverse polarity protection.	
Cable Length	Pre-wired with 300mm of cable.	
Spare Part	9.5243.05	Gasket
Compliance	ADR 49/00	

LED Rear Direction Indicator Lamp

Amber LED strip lamp suitable for coaches and buses.



Part Number	2156-12V	12 VOLT
	2156-24V	24 VOLT
Mounting	Two hole recess mount. Suitable for horizontal or vertical mounting.	
Power Consumption	2W	
Protection	Reverse polarity protection.	
Cable Length	Pre-wired with 0.5m of sheathed multi-core cable.	
Spare Part	9.5243.05	Gasket
Compliance	ADR 6/00: Cat 2a	

LED High Level Brake Lamp

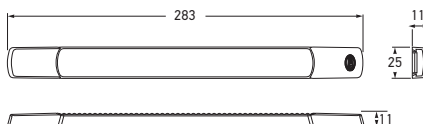
Strip LED lamp designed for rear spoiler applications. Clear lens version optic appears clear until illuminated.



P/N 5243-CLEAR



Part Number	RED LENS	CLEAR LENS	
	5243	5243-CLEAR	12 VOLT
	5243-24V	5243-24VCLEAR	24 VOLT
Mounting	Two hole recess mount. Suitable for horizontal or vertical mounting.		
Power Consumption	2W		
Protection	Reverse polarity protection. IP 6K7 (Protection against dust and temporary water immersion) IP 6K9K (Protection against dust and high-pressure/steam jet cleaning)		
Cable Length	Pre-wired with 2.5m of multi-core cable.		
Spare Part	9.5243.05	Gasket	
Compliance	ADR 49/00: Cat S3 (E4) 02 7547 ECE R7/02		



Part Number	5245	12 VOLT
	5245-24V	24 VOLT
Mounting	Suitable for horizontal or vertical mounting.	
Power Consumption	3W	
Protection	Reverse polarity protection. IP 6K7 (Protection against dust and temporary water immersion) IP 6K9K (Protection against dust and high-pressure/steam jet cleaning)	
Cable Length	Pre-wired with 2.5m of sheathed multi-core cable.	
Lens Material	Grilamid®	
Accessories	9.2652.09 9.1009.09	White screw caps (Pack of 4) Charcoal screw caps (Pack of 4)
Compliance	ADR 49/00: Cat S3	

LED High Level Brake Lamp - Surface Mount

Surface mount LED high level brake lamp that is designed with an ultra wide visibility optic to suit a wide range of mounting positions and angles. Featuring a low profile, ultra durable Grilamid® nylon lens for extreme impact, UV, chemical and stress resistance. Optic appears clear until illuminated.



Ultra slim height of only 11mm. Lamp shown active.



Part Number	5237 (Coupe)			12 VOLT
	5238 (Sedan)			
	5239 (Wagon)			
Mounting	Adhesive mounting tape. Window angles for Coupe are 20° - 36°, Sedan 37° - 56° and Wagon 57° - 80°.			
Voltage	12V			
Power Consumption	3W			
Cable Length	Pre-wired with 2.5m of multi-core cable.			
Spare Parts		LED insert 12V	Housing kit & decal	
	P/N 5237	9.5237.01	9.5237.09	
	P/N 5238	9.5237.01	9.5238.09	
	P/N 5239	9.5237.01	9.5239.09	
Compliance	ADR 49/00: Cat S3			

LED High Level Brake Lamp

Designed for rear windows of angles from 20° (Coupe) to 80° (Wagon). Supplied with installation kit and instruction sheet. Optic appears clear until illuminated.

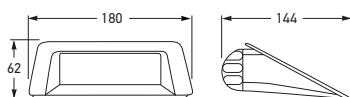


P/N 5237
Shown illuminated

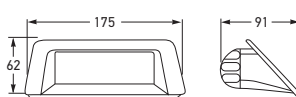


P/N 5238

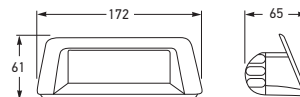
P/N 5239



P/N 5237



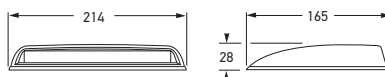
P/N 5238



P/N 5239

External Mount High Level Brake Lamp

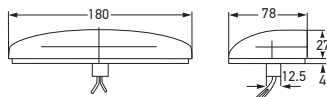
Designed to mount externally on boot lid.
Die-cast metal housing with grey powder coat finish. May be painted to match vehicle.



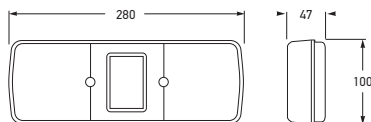
Part Number	5242
Mounting	External on boot lid.
Bulb to Suit	W1221
Compliance	ADR 49/00: Cat S3

External Mount High Level Brake Lamp

Designed to mount externally on boot lid.
May be painted to match vehicle.



Part Number	2DA 007 541-001	
Mounting	External on boot lid.	
Bulbs to Suit	12V 24V	W125 x 4 W245 x 4
Compliance	(E) 2343	ECE R7/02

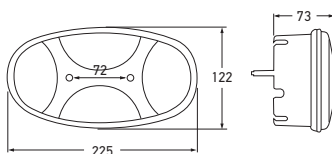


Stop/Rear Position/Rear Direction Indicator Lamp with Retro Reflector

Suitable for insulated earth circuits.
Shallow body. Retro reflector area 32cm².



Part Number	2397			12 VOLT
	2397-BULK (Pack of 10)			
	2397-24V			24 VOLT
	2397-24VBULK (Pack of 10)			
Mounting	Surface mount.			
Bulbs to Suit		12V	24V	
	Stop:	K1221	K2421	
	Rear position:	L125	L245	
	Rear direction indicator:	K1221	K2421	
Spare Part	9.2397.01	Lens		
Compliance	ADR 6/00: Cat 2a	ADR 47/00	ADR 49/00	



Stop/Rear Position/Rear Direction Indicator/Reversing Lamp

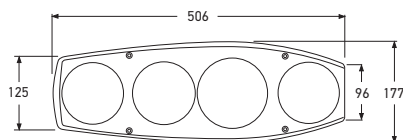
Suitable for light trailer, agricultural and construction vehicles.



Part Number	2VP 343 640-027			RIGHT HAND SIDE
	2VP 343 640-037			LEFT HAND SIDE
Mounting	Surface mount. Suitable for horizontal or vertical mounting.			
Bulbs to Suit	12V	24V		
	Stop:	R1221	R2421	
	Rear position:	G1210	G2410	
	Rear direction indicator:	R1221	R2421	
	Reversing:	R1221	R2421	
Compliance	E17 0303	ECE R6/01	ECE R7/02	ECE R23/00

Stop/Rear Position/Rear Direction Indicator/Reversing Lamp

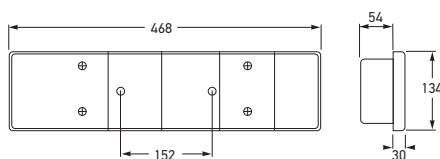
For mobile homes. With reversing light and round reflector.



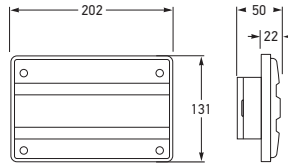
Part Number	2VP 341 419-127	RIGHT HAND SIDE
	2VP 341 419-137	LEFT HAND SIDE
Mounting	Horizontal flush mount into body.	
Bulbs to Suit	12V	24V
	Stop/Rear position: S1221/5V	S2421/5V
	Rear direction indicator: R1221	R2421
	Reversing: R1221	R2421
Compliance	(E4) 9836	ECE R6/01 ECE R7/02 ECE R23/00 ECE R3/02

Rear Combination Lamp to suit MAN 93-00/Scania 88-96

Combination rear lamp with stop, rear position, reversing, rear direction indicator, rear fog functions and reflex reflector.



Part Number	2VP 008 204-061			
Mounting	Two bolt mount (bolts supplied).			
Bulbs to Suit	12V	24V		
	Stop: R1221	R2421		
	Rear position: G125 x 3	G245 x 3		
	Rear direction indicator: R1221	R2421		
Spare Part	9EL 152 889-001	Lens and gasket		
Compliance	(E4) 9808 ECE R6/01	(E4) 9810 ECE R7/02	(E4) 3178 ECE R 23/00	(E4) 4060 ECE R3/02 ECE R38/00



Designline Stop/Rear Position Lamp with Retro Reflector

Single bulb holder. Suitable for insulated earth circuits. Reflector area 35cm².



Part Number	2321	12 VOLT
	2321-24V	24 VOLT
Mounting	Recess mount with 78 x 145mm opening. Suitable for horizontal or vertical mounting.	
Bulbs to Suit	12V	S1221/5V
	24V	S2421/5V
Compliance	ADR 47/00	ADR 49/00



Designline Rear Direction Indicator Lamp

Single bulb holder. Suitable for insulated earth circuits.



Part Number	2145	12 VOLT
	2145-24V	24 VOLT
Mounting	Recess mount with 78 x 145mm opening. Suitable for horizontal or vertical mounting.	
Bulbs to Suit	12V	R1221
	24V	R2421
Compliance	ADR 6/00: Cat 2a	



Designline Reversing Lamp

Single bulb holder. Suitable for insulated earth circuits.



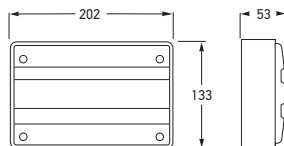
Part Number	2046	12 VOLT
	2046-24V	24 VOLT
Mounting	Recess mount with 78 x 145mm opening. Suitable for horizontal or vertical mounting.	
Bulbs to Suit	12V	R1221
	24V	R2421
Compliance	ADR 1/00	

SPARE PARTS FOR DESIGNLINE RECESS MOUNT LAMPS

9.2320.01	Red lens
9.2144.01	Amber lens
9.2041.01	Clear lens
9.2043.05	Lens or base gasket
9.2046.09-BULK	Housing
9.2320.08	Double contact bulb holder (includes 12V bulb)
9.2320.08-24V	Double contact bulb holder (includes 24V bulb)

Designline Stop/Rear Position Lamp with Retro Reflector

Single bulb holder. Suitable for insulated earth circuits. Reflector area 35cm².



Part Number	2320	12 VOLT
	2320-24V	24 VOLT
Mounting	Two bolt surface mount. Suitable for horizontal or vertical mounting.	
Bulbs to Suit	12V 24V	S1221/5V S2421/5V
Compliance	ADR 47/00	ADR 49/00

Designline Rear Direction Indicator Lamp

Single bulb holder. Suitable for insulated earth circuits.



Part Number	2144	12 VOLT
	2144-24V	24 VOLT
Mounting	Two bolt surface mount. Suitable for horizontal or vertical mounting.	
Bulbs to Suit	12V 24V	R1221 R2421
Compliance	ADR 6/00: Cat 2a	

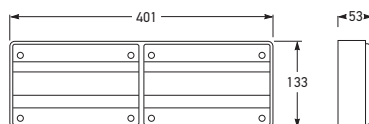
Designline Reversing Lamp

Single bulb holder. Suitable for insulated earth circuits.



Part Number	2041	12 VOLT
	2041-24V	24 VOLT
Mounting	Two bolt surface mount. Suitable for horizontal or vertical mounting.	
Bulbs to Suit	12V 24V	R1221 R2421
Compliance	ADR 1/00	

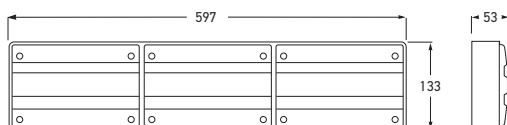
MARKER AND SIGNAL



Part Number	2422	12 VOLT
	2422-24V	24 VOLT
Mounting	Two bolt surface mount. Suitable for horizontal or vertical mounting.	
Bulbs to Suit	12V	24V
	Stop/rear position: S1221/5V Rear direction indicator: R1221	S2421/5V R2421
Compliance	ADR 6/00: Cat 2a	ADR 47/00 ADR 49/00

Designline Stop/Rear Position/
Rear Direction Indicator Lamp
with Retro Reflector

Suitable for insulated earth circuits.



Part Number	2423	12 VOLT
	2423-24V	24 VOLT
Mounting	Two bolt surface mount. Suitable for horizontal or vertical mounting.	
Bulbs to Suit	12V	24V
	Stop/rear position: S1221/5V Rear direction indicator: R1221	S2421/5V R2421
Compliance	ADR 6/00: Cat 2a	ADR 47/00 ADR 49/00

Designline Stop/Rear Position/
Rear Direction Indicator Lamp
with Retro Reflector

Suitable for insulated earth circuits.



Part Number	2424	12 VOLT
	2424-24V	24 VOLT
Mounting	Two bolt surface mount. Suitable for horizontal or vertical mounting.	
Bulbs to Suit	12V	24V
	Stop/rear position: S1221/5V Rear direction indicator: R1221 Reversing: R1221	S2421/5V R2421 R2421
Compliance	ADR 1/00	ADR 6/00: Cat 2a ADR 47/00 ADR 49/00

Designline Stop/Rear Position/
Rear Direction Indicator/Reversing
Lamp with Retro Reflector

Suitable for insulated earth circuits.

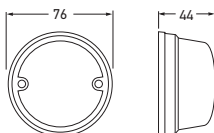


SPARE PARTS FOR DESIGNLINE SURFACE MOUNT LAMPS

9.2320.01	Red lens
9.2144.01	Amber lens
9.2041.01	Clear lens
9.2043.05	Lens gasket
9.2041.09-BULK	Single Module Housing
9.2422.09	Double Module Housing
9.2423.09	Triple Module Housing
9.2041.08	Single contact bulb holder (includes 12V bulb)
9.2041.08-24V	Single contact bulb holder (includes 24V bulb)
9.2320.08	Double contact bulb holder (includes 12V bulb)
9.2320.08-24V	Double contact bulb holder (includes 24V bulb)

Stop Lamp

Single bulb holder.



Part Number	2303	
Bulbs to Suit	12V 24V	K1221 K2421
Spare Parts	2.2459.01 2.0423.03	Red lens Rubber back plate
Compliance	ADR 49/00	

Front Direction Indicator Lamp

Single bulb holder.



Part Number	2100	
Bulbs to Suit	12V 24V	K1221 K2421
Spare Parts	2.6830.01 2.0423.03	Amber lens Rubber back plate
Compliance	ADR 6/00: Cat 1a	

Front Position/End Outline Lamp

Single bulb holder.



Part Number	2000	
Bulbs to Suit	12V 24V	L125 L245
Spare Parts	2.6856.01 2.0423.03	Clear lens Rubber back plate
Compliance	ADR 49/00	

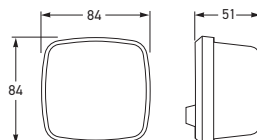
Reversing Lamp

Single bulb holder.



Part Number	1407	
Bulbs to Suit	12V 24V	K1221 K2421
Spare Parts	1.5147.01 2.0423.03	Clear lens Rubber back plate
Compliance	ADR 1/00	

MARKER AND SIGNAL



Stop/Rear Position/Number Plate Lamp

Suitable for insulated earth circuits.



Part Number	2384			
Bulbs to Suit		12V	24V	
	Stop:	R1221	R2421	
	Rear position/Number plate:	L125	L245	
Spare Part	9.2384.01	Red lens		
Compliance	ADR 48/00 ECE R4/00	ADR 49/00 ECE R7/02	(E1) 31 453	(E1) 53 210



Rear Direction Indicator Lamp



Part Number	2147		
Bulbs to Suit	12V	R1221	
	24V	R2421	
Spare Part	9.2147.01	Amber lens	
Compliance	ADR 6/00: Cat 2a	(E) 32 619	ECE R6/01



Front Direction Indicator Lamp



Part Number	2148		
Bulbs to Suit	12V	R1221	
	24V	R2421	
Spare Part	9.2148.01	Amber lens	
Compliance	ADR 6/00: Cat 1a	(E) 32 661	ECE R6/01



Front Position/End Outline Lamp



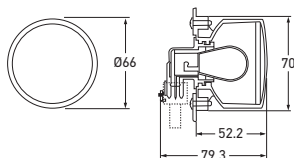
Part Number	2064		
Bulbs to Suit	12V	L125	
	24V	L245	
Spare Part	9.2064.01	Clear lens	
Compliance	ADR 49/00	(E) 11 793	ECE R7/02



Reversing Lamp



Part Number	1405		
Bulbs to Suit	12V	R1221	
	24V	R2421	
Spare Part	9.1405.01	Clear lens	
Compliance	ADR 1/00	(E) 8703	ECE R23/00



The lamp features a reflector with a high quality facet pattern and a clear lens. Optimised light output, making applications behind outer cover lenses possible.

Mounting

Mounting depth of 80mm. The standard version is designed to be mounted with a screw fitting from the rear. If required the lamp can be fitted from the front using an optional mounting plate. Simplified electrical connection via a two or three pin plug (not supplied).

Stop/Rear Position Lamp



Part Number	2SB 009 001-061	
Bulb to Suit	12V	S1221/5V
	24V	S2421/5V
Compliance	Ⓔ4 7613	ECE R7/02

Rear Direction Indicator Lamp



Part Number	2BA 009 001-001	
Bulb to Suit	12V	RY1221
	24V	RY2421
Compliance	Ⓔ4 6546	ECE R6/01

Front Direction Indicator Lamp



Part Number	2BA 009 001-071	
Bulb to Suit	12V	RY1221
	24V	RY2421
Compliance	Ⓔ4 6546	ECE R6/01

Front Position Lamp

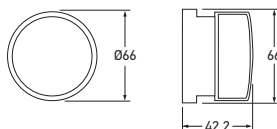


Part Number	2PF 009 001-081	
Bulb to Suit	12V	S1221/5V
	24V	S2421/5V
Compliance	Ⓔ4 7613	ECE R7/02

Reversing Lamp



Part Number	2ZR 009 001-011	
Bulb to Suit	12V	R1221
	24V	R2421
Compliance	Ⓔ4 23 255	ECE R23/00



Part Number	8RA 009 001-031	
Mounting	Mounting depth of 43mm. The standard version is for screw fitting from behind. If required the reflector can be fitted from the front using an optional mounting plate.	
Compliance	E4 3189	ECE R3/02

Rear Reflex Reflector

This reflector is designed to match the clear glass lamps. All the accessories and holders can be used.



60mm Accessories

Accessories to suit 60mm lamps.

Part Number	DESIGN RING FOR 60MM MODULES (OPTIONAL)	
	9HB 161 122-007	SILVER
Mounting	Pushes over front of 60mm lamp and locks into place.	



P/N 9HB 161 122-007

Part Number	MOUNTING PLATE	
	9XD 161 119-007	BLACK
Mounting	For front mounting of 60mm lamps.	



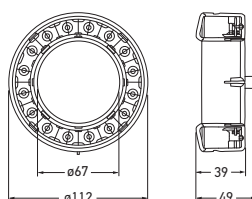
P/N 9XD 161 119-007

Part Number	TWO POLE PLUG (WITH TERMINALS AND SEALS)	
	8JD 156 150-807	



P/N 8JD 156 150-807

Part Number	THREE POLE PLUG (WITH TERMINALS AND SEALS)	
	8JD 162 581-802	



Part Number	2SB 009 362-021		12 VOLT
	DESIGN RING FOR LED RING LAMP (OPTIONAL)		
	9HB 163 085-012		CHROME
Mounting	Screw mount from rear. Design ring pushes over front of 112mm lamp and locks into place.		
Voltage	12V		
Current Draw	Stop:	2.3W	
	Rear position:	0.1W	
Cable Length	Pre-wired with 2.5m of cable.		
Compliance	(E4) 7746	ECE R7/02	

LED Ring Stop/Rear Position Lamp - 12 Volt

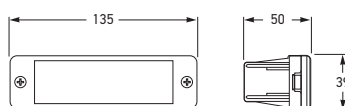
LED ring lamp suitable for use with 60mm lamps, 16 LEDs for rear position function and 8 LEDs for stop function. Clear lens.



P/N 9HB 163 085-012

Front Direction Indicator Lamp

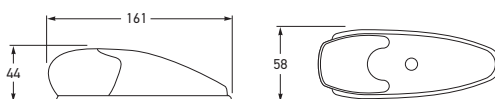
Universal flush mount front direction indicator lamp ideal for coach or bull-bar applications.



Part Number	2101	
Mounting	Flush mount. Suitable for left and right hand mounting.	
Bulbs to Suit	12V 24V	R1221 R2421
Spare Part	9.2101.01	Amber lens
Compliance	ADR 6/00: Cat 1	

Supplementary Side Direction Indicator or Cab Marker Lamp (Cat. 5)

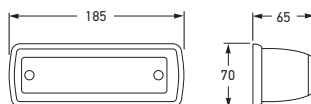
Supplied with flat mounting gasket.



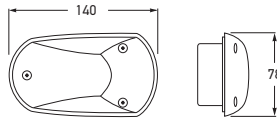
Part Number	2123	
Bulbs to Suit	12V 24V	G125 G245
Spare Parts	2.0965.02 2.0957.04 2.1872.01	Amber lens Flat rubber back plate Contoured gasket for curved surfaces
Compliance	ADR 6/00: Cat 1	ADR 45/01

Supplementary Side Direction Indicator Lamp (Cat. 6)

Single bulb holder.



Part Number	2142	
Bulbs to Suit	12V 24V	R1221 R2421
Additional Function	Supplementary side direction indicator lamp (Cat. 5) where 12V (G125) or 24V (G245) bulbs are used.	
Spare Part	9.2142.01	Amber lens
Compliance	ADR 6/00: Cat 6	



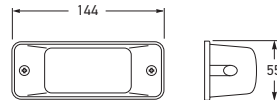
Supplementary Side Direction Indicator Lamp (Cat. 6)

Side mounted direction lamp suitable for either left or right hand mounting.



P/N 2155-24V

Part Number	2155 (Clear lens)		12 VOLT
	2155-24V (Amber lens)		24 VOLT
Bulbs to Suit	12V 24V	RY1221 R2421	
Spare Part	9.2155.05	Wiring harness set	
Compliance	ADR 6/00: Cat 6		
Arrow on lens must face direction of travel.			



Supplementary Side Direction Indicator Lamp (Cat. 6)

Side mounted direction indicator lamp with rubber base. Suitable for insulated earth circuits.



Part Number	2153		LEFT HAND SIDE
	2154		RIGHT HAND SIDE
Mounting	Surface mount.		
Bulbs to Suit	12V 24V	R1221 R2421	
Compliance	ADR 6/00: Cat 6		
Arrow on lens must face direction of travel.			

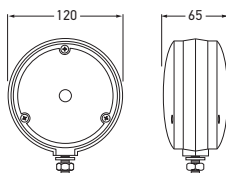
ADR CATEGORIES OF DIRECTION INDICATORS

ADR compliant indicators are categorised according to their intended function.

Category 1	Direction indicators for the front of the vehicle.
Category 2	Direction indicators for the rear of the vehicle.
Category 5	Supplementary side direction indicators for use on a vehicle also equipped with categories 1 and 2 direction indicators.
Category 6	Supplementary side direction indicators for use on a heavy vehicle also equipped with categories 1 and 2 direction indicators.

Front Direction Indicator/ Supplementary Side Direction Indicator Lamp (Cat.1 and 5)

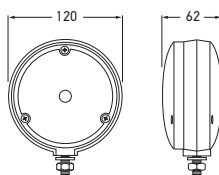
Double-sided direction indicator lamp.



Part Number	2127	
Mounting	Single bolt mount.	
Bulbs to Suit	12V 24V	R1221 R2421
Additional Function	Supplementary side direction indicator lamp where 12V (G125) or 24V (G245) bulbs are used.	
Spare Part	2.9800.09	Amber lens
Compliance	ADR 6/00: Cat 1	ADR 6/00: Cat 5
See page 59 for function category details.		

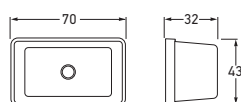
LED Front Direction Indicator Lamp (Cat.1)

Single-sided LED front direction indicator fitted with high-intensity LED insert and black housing. Fully sealed to withstand high-pressure washing.



Part Number	2128LED
Mounting	Single bolt mount.
Voltage	Multivolt™ for optimum brightness at input voltages from 9 to 33 volts.
Power Consumption	4W
Protection	Reverse polarity and 1500 watt Transient Voltage Suppressor (TVS) IP 6K6 (Protection against dust and high-pressure water jets) IP 6K7 (Protection against dust and temporary water immersion)
Compliance	ADR 6/00: Cat 1
See page 59 for function category details.	

MARKER AND SIGNAL

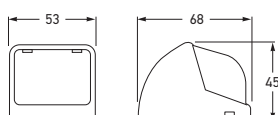


Side Marker Lamp

Suitable for insulated earth circuits.



Part Number	2042		12 VOLT
	2042-BULK (Pack of 24)		
	2042-24V		24 VOLT
Bulb to Suit	12V	M123 x 2	24 VOLT
	24V	M243 x 2	
Spare Parts	9.2042.01	Red/Amber lens	
Compliance	ADR 45/01		

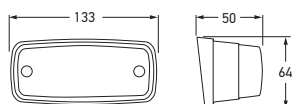


Front Position/Front End Outline Lamp

Fitted with polycarbonate lens and single bulb holder.



Part Number	2066		
Bulbs to Suit	12V	G1210	
	24V	G2410	
Compliance	ADR 49/00	(E1) 32 1691	ECE R7/02



Reversing Lamp

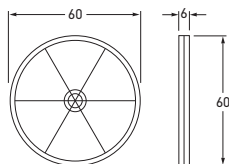
Single bulb holder.



Part Number	1413		
Bulbs to Suit	12V	R1221	
	24V	R2421	
Spare Part	9.1413.02	Lens	
Compliance	ADR 1/00	(E1) 8708	ECE R23/00

Retro Reflectors

60mm diameter complete with mounting screw, 22cm². Reflectors with self adhesive are ECE certified.



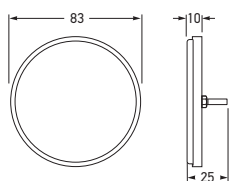
P/N 2916

P/N 2917

Part Number	2915	RED
	2915-1 (Self adhesive)	
	2915-BL (Blister pack - Pack of 2)	
	2916	AMBER
	2916-1 (Self adhesive)	
	2917	WHITE
	2917-1 (Self adhesive)	
Compliance	ADR 47/00	E13 02 3535 ECE R3/02

Retro Reflector - Red

83mm diameter red acrylic retro reflector with black rim, 48cm².



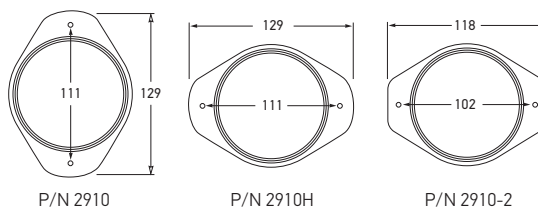
Part Number	2902
Mounting	Single bolt mount.
Compliance	ADR 47/00

Retro Reflector

83mm diameter acrylic retro reflector with plastic or metal surround, 48cm².



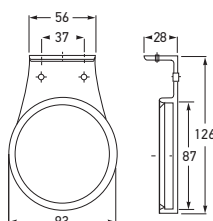
P/N 2910



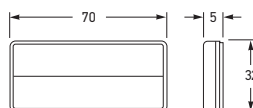
Part Number	2910 (Red)	VERTICAL
	2910H (Red)	HORIZONTAL
	2910-2 (Red - Metal surround)	VERTICAL OR HORIZONTAL
Mounting	Two hole surface mount.	
Compliance	ADR 47/00	

Retro Reflector - Red

83mm diameter red acrylic retro reflector with plastic surround, 48cm².



Part Number	2930	
	2930-BULK	PACK OF 32
Mounting	Right angled base with two holes for optional surface mount.	
Compliance	ADR 47/00	



Part Number	2919	AMBER
	2920	RED
	2920-BL (Blister pack - Pack of 2)	
	2920-BULK (Pack of 20)	
	2921	WHITE
Compliance ADR 47/00		

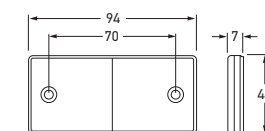
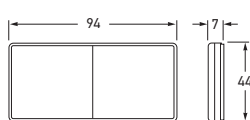
Retro Reflectors

70 x 31.5mm self adhesive, 18cm².



P/N 2920

P/N 2921



P/N 2922-2 - Two bolt holes

Part Number	2922	AMBER
	2922-2 (Two bolt holes)	RED
	2923	
	2923-BL (Blister pack - Pack of 2)	
	2923-BULK (Pack of 20)	
	2923-2 (Two bolt holes)	
	2923-2BL (Two bolt holes, Blister pack - Pack of 2)	
	2923-2BULK (Two bolt holes - Pack of 20)	
	2924	WHITE
Compliance ADR 47/00 (E1) 02 21395 ECE R3/02		

Retro Reflectors

94 x 44mm self adhesive (except two bolt hole version), 33cm².



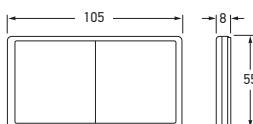
P/N 2922-2
Two bolt holes



P/N 2922

P/N 2923

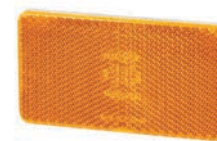
P/N 2924



Part Number	2925	AMBER
	2926	RED
	2926-BL (Blister pack - Pack of 2)	
	2927	WHITE
Compliance ADR 47/00		

Retro Reflectors

105 x 55mm self adhesive, 50cm².



P/N 2926

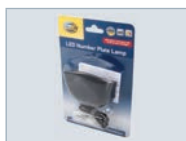
P/N 2927

LED Number Plate Lamp

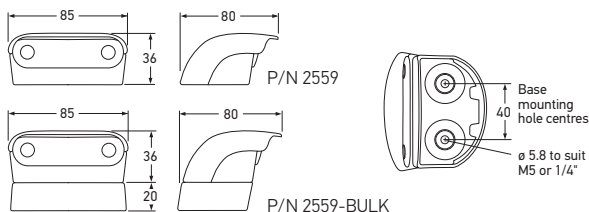
White LED number plate lamp. Bulk version includes 20mm mounting spacer. One lamp required for ADR compliance.



Mounting spacer
P/N 9.2559.08

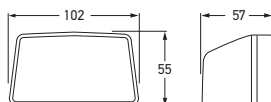


P/N 2559



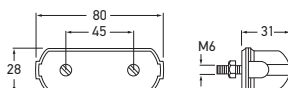
Part Number	2559	
	2559-BULK	PACK OF 8
Mounting	Surface mount.	
Voltage	Multivolt™ for optimum brightness in 12 and 24 volt systems.	
Protection	Reverse polarity protection. IP 6K6 (Protection against dust and high-pressure water jets) IP 6K7 (Protection against dust and temporary water immersion)	
Cable Length	Pre-wired with 0.5m of multi-core cable. Bulk pack pre-wired with 2.5m of multi-core cable.	
Spare Parts	9.2559.08 9.2559.02 9.2559.09 9.2559.19	Mounting spacer - black LED insert Mounting kit - black Mounting kit - white
Compliance	ADR 48/00	ECE R4/00

Number Plate Lamp



Part Number	2553		12 VOLT
	2553-24V		24 VOLT
Bulbs to Suit	12V 24V	G1210 G2410	
Spare Part	9.2553.01	Lens	
Compliance	ADR 48/00	(E) 22819	ECE R4/00

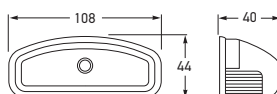
Number Plate Lamp



Part Number	2555		
Mounting	Two bolt mount.		
Bulbs to Suit	12V 24V	L125 L245	
Compliance	ADR 48/00	(E) 12815	ECE R4/00
Two lamps required for ADR compliance.			

Number Plate Lamp

Fitted with two bulb holders.



Part Number	2557		12 VOLT
	2557-24V		24 VOLT
Bulbs to Suit	12V 24V	HL124 x 2 HL244 x 2	
Spare Part	9.2557.01	Lens	
Compliance	ADR 48/00		

MARKER AND SIGNAL

Part Number	JUMBO LAMP SPARE PARTS	
	9.2319.01	RED LENS
	9.2143.01	AMBER LENS
	9.2043.01	CLEAR LENS
	9.2043.05	LENS GASKET



To suit P/N 2319



To suit P/N 2143

To suit P/N 2043

Part Number	STOP/REAR POSITION/REAR DIRECTION INDICATOR/ NUMBER PLATE LAMP SPARE PART	
	9.2396.01	RED/AMBER LENS



To suit P/N 2396

Part Number	STOP/REAR POSITION/REAR DIRECTION INDICATOR SPARE PART	
	9.2368.01	RED LENS



To suit P/N 2368

Part Number	SIDE MARKER LAMP SPARE PARTS	
	9.2006.01	RED LENS
	9.2006.02	AMBER LENS



To suit P/N 2006

Part Number	MARKER LAMP SPARE PARTS	
	9.2045.01	RED LENS
	9.2044.01	AMBER LENS



To suit P/N 2045



To suit P/N 2044

Part Number	MARKER LAMP SPARE PARTS	
	9.2304.01	RED LENS
	9.2140.01	AMBER LENS
	9.2141.01	CLEAR LENS



To suit P/N 2304



To suit P/N 2140

To suit P/N 2141

DuraLED® Accessories

Spare screw caps or screw bosses for the DuraLED® lamp range. Two screw caps and two screw bosses are required per lamp.



P/N 9.2330.15

SCREW CAPS - DURALED®		
Part Number	Colour	Quantity
9.2330.10	RED	PACK OF 4
9.2330.11	WHITE	
9.2330.12	BLUE	
9.2330.13	GREEN	
9.2330.14	YELLOW	
9.2330.15	BLACK	
9.2330.16	AMBER	



P/N 9.2330.10

P/N 9.2330.11

P/N 9.2330.12

P/N 9.2330.13

P/N 9.2330.14

P/N 9.2330.16



P/N 9.2378.10-BULK

SCREW CAPS - DURALED® COMBI-S/COMBI-R		
Part Number	Colour	Quantity
9.2378.10-BULK	RED	PACK OF 4
9.2378.11-BULK	WHITE	
9.2378.12-BULK	BLUE	
9.2378.13-BULK	GREEN	
9.2378.14-BULK	YELLOW	
9.2378.15-BULK	BLACK	
9.2378.16-BULK	AMBER	



P/N 9.2378.11-BULK

P/N 9.2378.12-BULK

P/N 9.2378.13-BULK

P/N 9.2378.14-BULK

P/N 9.2378.15-BULK

P/N 9.2378.16-BULK

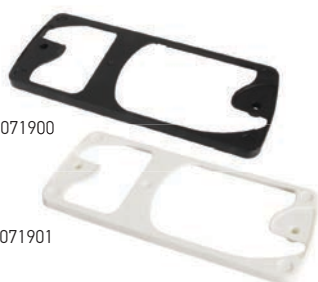


P/N 9.2330.17

SCREW BOSS	
9.2330.17	PACK OF 4

P/N 98071900

P/N 98071901



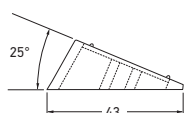
MOUNTING SPACERS - DURALED® COMBI	
98071900	BLACK
98071901	WHITE

Mounting spacer allows lamps to be surface mounted with the cable exiting any side of the spacer, or through the centre.

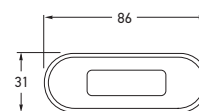
SHROUDS - DURALED® SURFACE MOUNT		
Part Number	Colour	Quantity
9.2053.08 (Nylon)	BLACK	SINGLE
9.2053.10-BULK	RED	PACK OF 4
9.2053.11-BULK	WHITE	
9.2053.12-BULK	BLUE	
9.2053.13-BULK	GREEN	
9.2053.14-BULK	YELLOW	
9.2053.15-BULK	AMBER	



P/N 9.2053.10-BULK P/N 9.2053.12-BULK P/N 9.2053.13-BULK P/N 9.2053.14-BULK P/N 9.2053.15-BULK



ANGLE MOUNT - DURALED® SURFACE MOUNT		
9.2053.07	BLACK	SINGLE



RIMS - DURALED® FLUSH MOUNT		
Part Number	Colour	Material
95968500	POLISHED	316 STAINLESS STEEL
95968502	GOLD PLATED	
95968506	SATIN CHROME PLATED	

To suit marker and signal lamps with 29mm wide rim.



P/N 95968500

SCREW CAPS - DURALED® FLUSH MOUNT		
Part Number	Colour	Quantity
9.2310.09-BULK	BLACK	PACK OF 4
9.2310.10-BULK	RED	
9.2310.11-BULK	WHITE	
9.2310.12-BULK	BLUE	
9.2310.13-BULK	GREEN	
9.2310.14-BULK	YELLOW	
9.2310.15-BULK	AMBER	
9.2310.16-BULK	GREY	

Pack sizes of 50 available upon request.



P/N 9.2310.10-BULK P/N 9.2310.12-BULK P/N 9.2310.13-BULK P/N 9.2310.14-BULK P/N 9.2310.15-BULK P/N 9.2310.16-BULK

DuraLED® Marker Lamp Accessories

Spare mounting shrouds for the surface mount marker and surface mount courtesy lamp range. One mounting shroud is required per lamp.



P/N 9.2053.08



P/N 9.2053.11-BULK

LED Combination Lamp Mounting Pack

Mounting pack to suit LED combination lamp P/Ns 2391, 2392L and 2392R.



Part Number

9.2391.08

EuroLED® Accessories

Spare covers or screw bosses for the EuroLED® range of lamps. One cover and two screw bosses are required per lamp.



P/N 9.2366.08

P/N 95995201



P/N 9.2366.11

P/N 95995200

P/N 9.2366.17

COVERS

Part Number	Colour	Quantity
9.2366.08	BLACK	SINGLE
9.2366.11	WHITE	

MOUNTING SPACER

95995200	BLACK	SINGLE
95995201	WHITE	

SCREW BOSS

9.2366.17	WHITE	PACK OF 4
-----------	-------	-----------

DuraLED® Heavy Duty Marker Lamp Accessories



P/N 9.2058.10

P/N 9.2058.10

STAINLESS STEEL HOUSING

9.2058.09	POLISHED	SINGLE
9.2058.10		

DuraLED® DT Lamp Accessories



P/N 9.2073.09



P/N 4963-P

HOUSING

9.2073.09	PACK OF 4
-----------	-----------

DT PLUG, WEDGE AND CONTACTS

4960-P	2 POLE
4963-P	6 POLE



P/N 4960-P

MARKER AND SIGNAL

Part Number	
9.2394.08	FRAME
9.2394.09	15MM SPACER
Mounting spacer allows lamps to be surface mounted with the cable exiting any side of the spacer, or through the centre.	

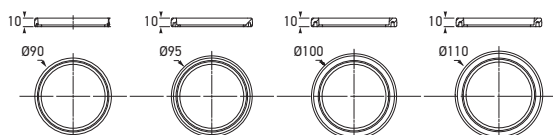
LED Combination Trailer Lamp Accessories

To suit LED combination lamp P/Ns 2394 and 2395.



P/N 9.2394.09

P/N 9.2394.08



Part Number	Diameter
98069600	90MM O.D
98069620	95MM O.D
98069640	100MM O.D
98069660	110MM O.D

83mm Round Lamps - Mounting Rings

Mounting rings to suit 83mm round lamp range. Allows retro-fitting of lamp into existing applications with mounting holes larger than a diameter of 83mm.



Jumbo-S Accessories

Accessories for the Jumbo-S LED lamp range.



MOUNTING GASKET BASE	
Part Number	Quantity
9.2361.08	SINGLE

SCREW CAPS AND SCREWS	
9.2361.09	SET OF 4

Designline Accessories

Housings and screw caps for the Designline lamp range.



HOUSING - SINGLE, DOUBLE AND TRIPLE MODULE	
Part Number	
9.2041.09-BULK	SINGLE
9.2422.09	DOUBLE
9.2423.09	TRIPLE

SCREW CAPS		
9.5240.30	BLACK	50 PACK

Number Plate Lamp Accessories

Mounting kit for number plate lamp P/N 2559.
Includes a housing, cover, and screw bosses.
One mounting kit is required per lamp.



Plastic screw caps

MOUNTING KIT		
Part Number	Colour	Quantity
9.2559.09	BLACK	SINGLE
9.2559.19	WHITE	

MOUNTING SPACER AND EXTENDED SCREW BOSSES		
9.2559.08	BLACK	SINGLE

BLACK PLASTIC SCREW CAPS		
9.5240.30		50 PACK

Surface Mount Strip Lamp Screw Caps



Part Number	Colour	Quantity
9.2652.09	WHITE	PACK OF 4
9.1009.09	CHARCOAL	

Marker and Courtesy Lamp Gaskets

Gaskets for narrow and wide rim LED courtesy lamps. Curved mount gasket (P/N 9GD 959 515-207) is designed to suit 64mm (2.5") pipes. Flexibility allows this particular gasket to suit a variety of curve radii.



P/N 9GD 959 515-127 (Rubber)



P/N 9GD 959 517-007 (Foam)

NARROW RIM (LAMP WIDTH 22MM)		
Part Number		Quantity
9GD 959 515-127		PACK OF 4
9GD 959 515-207 (Curved mount)		



P/N 9GD 959 515-207

WIDE RIM (LAMP WIDTH 29MM)		
9GD 959 517-007		PACK OF 4

Strip Lamp Gaskets

Gaskets for narrow and wide rim strip lamps.



P/N 9.5243.05 (Rubber)



P/N 9GD 959 155-507 (Foam)

NARROW RIM (LAMP WIDTH 26MM)		
Part Number		Quantity
9.5243.05		SINGLE

WIDE RIM (LAMP WIDTH 33MM)		
9GD 959 155-507		PACK OF 10

DESIGN RING FOR 60MM MODULES (OPTIONAL)	
Part Number	Colour
9HB 161 122-007	SILVER

MOUNTING PLATE	
Part Number	Colour
9XD 161 119-007	BLACK

TWO POLE PLUG (WITH TERMINALS AND SEALS)	
Part Number	
8JD 156 150-807	

THREE POLE PLUG (WITH TERMINALS AND SEALS)	
Part Number	
8JD 162 581-802	

DESIGN RING FOR LED RING LAMP (OPTIONAL)	
Part Number	Colour
9HB 163 085-012	CHROME

60mm Accessories

Accessories to suit 60mm lamps.



P/N 9HB 161 122-007
Pushes over front of 60mm lamp and locks into place.



P/N 9XD 161 119-007
For front mounting of 60mm lamps.



P/N 8JD 156 150-807



P/N 9HB 163 085-012
Design ring pushes over front of 112mm lamp and locks into place.