

INSTRUCTION SHEET

for: **Part No. 2652(-24V) / 2652WW(-24V)**



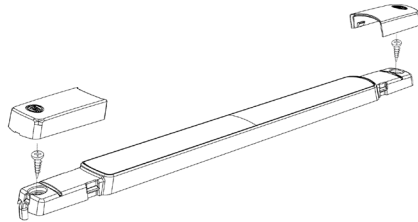
Interior / Exterior LED Strip Lamp

2652: White, 12V DC Only **2652-24V:** White, 24V DC Only
2652WW: Warm White, 12V DC Only **2652WW-24V:** Warm White, 24V DC Only

LED strip lamps offer many advantages over incandescent lighting including a slim design, significantly reduced power consumption, reduced heat and a high resistance to shock, vibration and moisture for a long service life in harsh environments.

Product Specifications

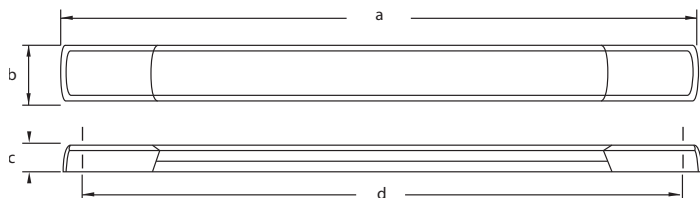
Lens Material	UV resistant enhanced impact acrylic
Colour Temperature	5000K (White) 3000K (Warm White)
Dimming	Capable to be dimmed
Cable	Pre-wired with 2.5m of twin core automotive cable
Operating Voltage	12V DC or 24V DC
Power Consumption	< 3.0W (<0.25A @ 12V / <0.1A @ 24V)
Degree of Protection	IP6K7 / IP6K9K
Weight	110g (including cable)
Installation	Surface mount (2 screws)



Mounting Instructions

- Lamp must be mounted on a flat surface with no curvature.
- Drill two 3 mm Ø mounting holes at 265 mm centres through the mounting surface to allow fitment of the lamp.
- Using the mounting screws tighten the lamp to the mounting surface (Maximum torque 1.5Nm).
- Fit screw caps.

Note: Do not overtighten the mounting screws in the plastic lens.
 If it is necessary to remove the screw caps, lever them out with a small flat head screw driver.



Dimensions
 a = 285 mm
 b = 25.0 mm
 c = 10.0 mm
 d = 265 mm

INSTRUCTION SHEET

for: **Part No. 2652(-24V) / 2652WW(-24V)**



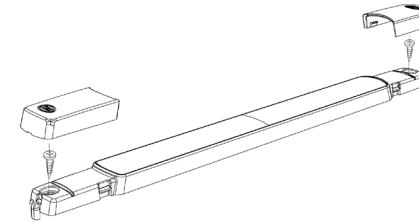
Interior / Exterior LED Strip Lamp

2652: White, 12V DC Only **2652-24V:** White, 24V DC Only
2652WW: Warm White, 12V DC Only **2652WW-24V:** Warm White, 24V DC Only

LED strip lamps offer many advantages over incandescent lighting including a slim design, significantly reduced power consumption, reduced heat and a high resistance to shock, vibration and moisture for a long service life in harsh environments.

Product Specifications

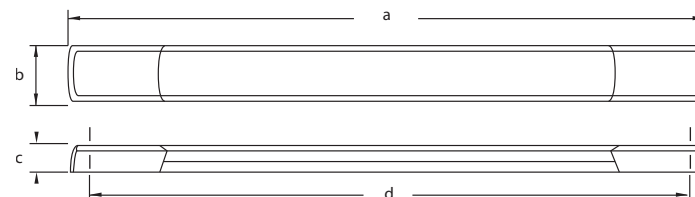
Lens Material	UV resistant enhanced impact acrylic
Colour Temperature	5000K (White) 3000K (Warm White)
Dimming	Capable to be dimmed
Cable	Pre-wired with 2.5m of twin core automotive cable
Operating Voltage	12V DC or 24V DC
Power Consumption	< 3.0W (<0.25A @ 12V / <0.1A @ 24V)
Degree of Protection	IP6K7 / IP6K9K
Weight	110g (including cable)
Installation	Surface mount (2 screws)



Mounting Instructions

- Lamp must be mounted on a flat surface with no curvature.
- Drill two 3 mm Ø mounting holes at 265 mm centres through the mounting surface to allow fitment of the lamp.
- Using the mounting screws tighten the lamp to the mounting surface (Maximum torque 1.5Nm).
- Fit screw caps.

Note: Do not overtighten the mounting screws in the plastic lens.
 If it is necessary to remove the screw caps, lever them out with a small flat head screw driver.



Dimensions
 a = 285 mm
 b = 25.0 mm
 c = 10.0 mm
 d = 265 mm

INSTRUCTION SHEET

for: **Part No. 2652(-24V) / 2652WW(-24V)**



Wiring Instructions

Lamp is polarity conscious. The reversal of the polarity will not damage this product but will inhibit its function. HELLA recommends wire connections be soldered and heat shrink tubing applied to seal the joint.

Wire Colour	Connect to	Power Consumption
Black	Earth (-)	-
Red	Signal (+)	3 watts

Note 1: Lamp must be protected by a fuse rated at 3 amperes maximum.

Note 2: Do not attempt to open - no serviceable parts inside.

Protection against damage due to voltage spikes

The lamp is protected against reverse polarity connection and negative voltage spikes of up to 1000 volts.

Electric Welding

Electric Welding may damage the LED lamps. For LED lamps, HELLA recommends the negative connection to be wired isolated from the vehicle chassis. If the lamp uses the chassis as the earth return it is recommended that this earth return is disconnected during electric welding.

FIT AND FORGET - BY DESIGN

Congratulations, the product you have selected comes from **HELLA** - a world leader in LED lighting design.



Following the launch of the first LED automotive signal lamps in 1990, **HELLA** Design and Innovation continues to set new standards. **HELLA** innovative solutions have been incorporated into millions of lamps, engineered and tested to the most stringent standards, to suit the most demanding environmental conditions.

The cornerstone to the success of our products is our no compromise **Fit and Forget - by Design** philosophy which is incorporated into every step of the product life cycle.

In a world consuming finite resources at an ever faster rate, **Fit and Forget - by Design** is the right environmental choice that also makes perfect economic sense to customers that consider the total life cycle Cost of Ownership.

INSTRUCTION SHEET

for: **Part No. 2652(-24V) / 2652WW(-24V)**



Wiring Instructions

Lamp is polarity conscious. The reversal of the polarity will not damage this product but will inhibit its function. HELLA recommends wire connections be soldered and heat shrink tubing applied to seal the joint.

Wire Colour	Connect to	Power Consumption
Black	Earth (-)	-
Red	Signal (+)	3 watts

Note 1: Lamp must be protected by a fuse rated at 3 amperes maximum.

Note 2: Do not attempt to open - no serviceable parts inside.

Protection against damage due to voltage spikes

The lamp is protected against reverse polarity connection and negative voltage spikes of up to 1000 volts.

Electric Welding

Electric Welding may damage the LED lamps. For LED lamps, HELLA recommends the negative connection to be wired isolated from the vehicle chassis. If the lamp uses the chassis as the earth return it is recommended that this earth return is disconnected during electric welding.

FIT AND FORGET - BY DESIGN

Congratulations, the product you have selected comes from **HELLA** - a world leader in LED lighting design.



Following the launch of the first LED automotive signal lamps in 1990, **HELLA** Design and Innovation continues to set new standards. **HELLA** innovative solutions have been incorporated into millions of lamps, engineered and tested to the most stringent standards, to suit the most demanding environmental conditions.

The cornerstone to the success of our products is our no compromise **Fit and Forget - by Design** philosophy which is incorporated into every step of the product life cycle.

In a world consuming finite resources at an ever faster rate, **Fit and Forget - by Design** is the right environmental choice that also makes perfect economic sense to customers that consider the total life cycle Cost of Ownership.