



INSTRUCTION SHEET
for: **2XA 980 855-xxx**

APPLICATION AND MOUNTING INSTRUCTIONS

REAR END-OUTLINE MARKER LAMP AND REAR POSITION (SIDE) LAMP
Multivolt 12 / 24V DC

Lens Marking and Installation Requirements

This lamp, identified by lens marking (E24) 5878, the backplate marking 02R1, and the HELLA logo was manufactured to comply with ECE Regulation 7 for Rear Position (Side) / Stop Lamps.

- Lamp mounting surface must be vertical to the ground and be square to the longitudinal axis of the vehicle.
- Lamp reference axis can be horizontal or vertical.

Rear End-Outline Marker Lamp

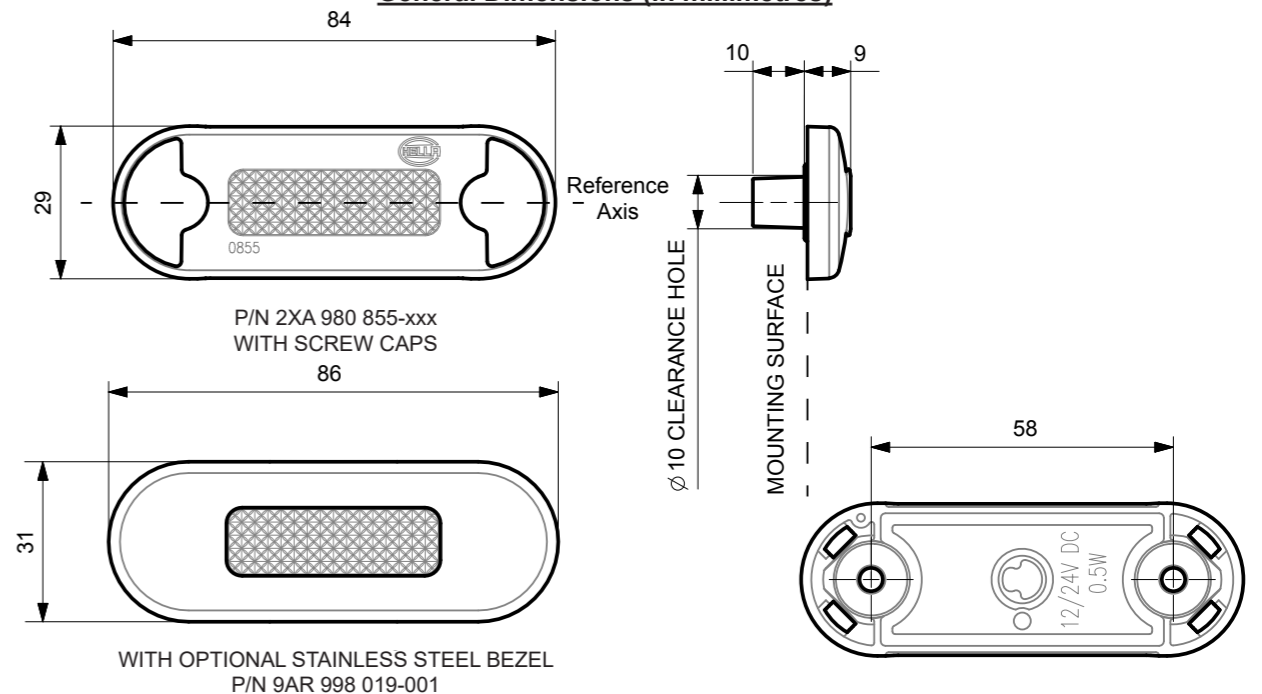
- Lamp must be visible between - Horizontal angle: 0° inwards (parallel with vehicle axis) and 80° outwards
Vertical angle: 5° above and 20° below the horizontal

Rear Position (Side) Lamp

- Lamp must be visible between - Horizontal angle: 45° inwards and 80° outwards
Vertical angle: 15° above and below the horizontal

Please refer to ECE Regulation 48 for more details.

General Dimensions (in millimetres)



Lamp Mounting Instructions

- Lamp should be mounted on a flat surface with no curvature.
 - Drill a minimum hole size of Ø10 mm through the mounting surface for the centre cable exit. The lamp can then be used as a template to mark the location of the mounting holes.
 - Drill two mounting holes up to Ø5.5 mm at 58 mm centres through the mounting surface.
 - Fasten the lamp, with a maximum torque of 2.5 Nm, to the mounting surface using two Ø5 mm screws or bolts (not included). A maximum screw head height of 4 mm is recommended.
 - Once the lamp is mounted, clip the screw caps on securely until flush with the lens surface.
 - Or alternatively, clip the optional stainless steel bezel securely to the lens (see next page for illustration).
- Note: Do not use countersunk screws or overtighten the mounting screws in the plastic lens.
Lamp is fully sealed and has no serviceable components.

Compatibility to existing electrical systems

It is important for the installer to ascertain the compatibility of the low power consumption LED lamps with the electrical and/or electronic systems of the complete vehicle, including trailers. In most cases the reduced power consumption is beneficial by imposing less demands on the entire electrical system.

For certain functions some electrical systems rely on a set power consumption for monitoring whether, for example, a trailer is connected.

Operation of this lamp using alternating current or modulated direct voltage will cause premature light failure. HELLA recommends connecting ADR or ECE certified Multivolt LED signal and marker lamps to a continuous (unmodulated) 12V or 24V power supply to ensure safe light operation.

HELLA-New Zealand Limited, Auckland, New Zealand



HELLA-New Zealand Limited
Type: 0855
Hella Part No.: 2PF 980 855-XXX, 2XA 980 855-XXX,
2PF 959 855-XXX, 2XA 959 855-XXX

13.10.2022

Mounting Instruction

Belongs to approval no.: E24 5878 (intended installation to ECE - R48)

Front Position- or Rear Position Lamp for Automobile

Light source(s): 2 LEDs

Test voltage: 13.5V or 28.0V

Nominal voltage: 12.0V or 24.0V

Nominal wattage: 0.5W

☒ = Centre of reference in accordance with the ECE-Regulation-No. 7.
Bezugspunkt nach der ECE-Regelung Nr. 7.

☑ = Centre of reference for the definition for illuminating surface in accordance with the Council Directive
76/756 EEC or ECE-Regulation No. 48 (see Annex A).
Bezugspunkt zur Bestimmung der Grenzen der leuchtenden Fläche nach 76/756 EWG bzw. ECE-Regelung Nr. 48.

☑ = Bezugsachse: Parallel zur Bestimmung der Grenzen der leuchtenden Fläche nach 76/756 EWG bzw. ECE-Regelung Nr. 48.
Markierung s. auf der Abschluss-Scheibe. Maße s. Anlage A.

☑ = Axis of reference: Parallel to the car centre line and parallel to the road.
Bezugsachse: Parallel zur Fahrzeugmittellinie und parallel zur Fahrbahn.

☑ = Mounting of the horizontal installation is illustrated.
Der horizontale Aufbau ist dargestellt.

☑ = The lamp may be used for horizontal or vertical mounting installation.
Die Leuchte darf verwendet werden für den horizontalen und vertikalen Einbau.

☑ = The lamp may be used with a stainless steel trim or with two screw caps.
Die Leuchte darf verwendet werden mit einem Edelstahlblech oder mit zwei Schraubendeckungen.



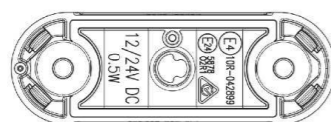
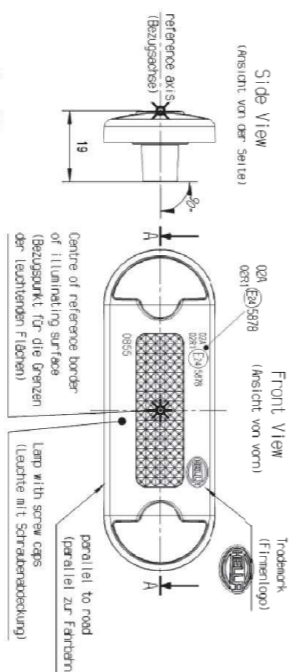
HELLA-New Zealand Limited
Type: 0855
Hella Part No.: 2PF 980 855-XXX, 2XA 980 855-XXX,
2PF 959 855-XXX, 2XA 959 855-XXX

13.10.2022

Mounting Instruction

Belongs to approval no.: E24 5878 (intended installation to ECE - R48)

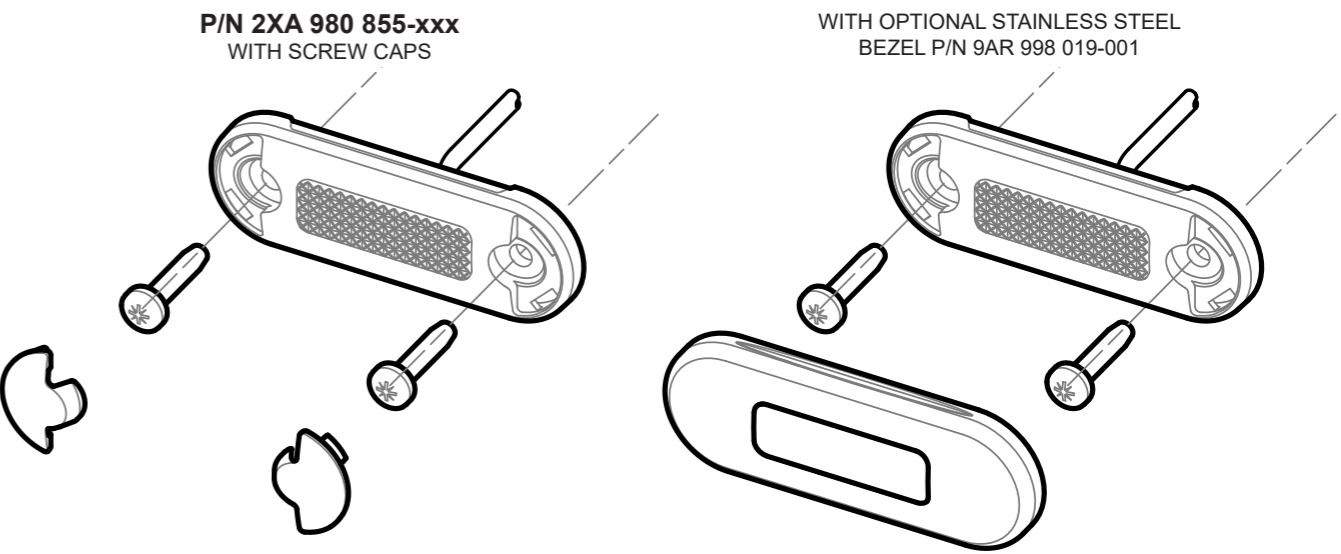
Rear Position Lamp for Automobile



The lamp may be used for horizontal or vertical mounting installation.
Die Leuchte darf verwendet werden für den horizontalen und vertikalen Einbau.



INSTRUCTION SHEET
for: **2XA 980 855-xxx**



Wiring Colour Coding

The LED lamp is multi voltage capable for optimum brightness in 12 and 24 Volt systems. LED modules are polarity conscious. Reverse polarity will not damage this product but will inhibit its function. HELLA recommends wire connections be soldered, and heat shrink tubing applied to seal the joint.

Colour	Connect to	Power Consumption
Black	Earth (-)	-
Red	Positive (+)	0.5 W

NB: Lamp must be protected by a fuse rated at 2 amperes maximum.



NSAI

ECE TYPE-APPROVAL CERTIFICATE



Communication concerning:
~~Approval granted~~
~~Approval extended~~
~~Approval refused~~
~~Approval withdrawn~~
~~Production definitively discontinued~~

of a type device pursuant to Regulation No. 7

Approval No: **E24*7R0227*5878*01**

Reason for extension:

See test report ITT4/0042 - 01, ITT4/0043 - 01 and accompanying manufacturer's information document for details

- Trade name or mark of the device:
HELLA
- Manufacturer's name for the type of device:
Versions:
0855

See test report ITT4/0042 - 01, ITT4/0043 - 01 and accompanying manufacturer's information document for details

- Manufacturer's name and address:
Hella New Zealand Limited
81-83 Ben Lomond Crescent,
Pakuranga, Auckland, New Zealand

- If applicable, name and address of manufacturer's representative:

HELLA GmbH & Co. KGaA
Rixbecker Straße 75,
DE-59552 Lippstadt, Germany

- Submitted for approval on:
As before and 03.11.2022

FAKT S.r.l.,
Via Lilloes, 53,
I-25086 Rezzato (BS), Italy

- Technical service responsible for conducting approval tests:

As before and 28.10.2022

- Date of test report issued by that service:

ITT4/0042 up to -01, ITT4/0043 up to -01

- Number of report issued by that service:

¹ Distinguishing number of the country which has granted/reissued/withdrawn approval (see approval provisions in the Regulation).
² Strike out which does not apply.

CT-11-13 Rev 9

NSAI, 1 Swift Square, Northwood, Sundry, Dublin 9, Ireland. Telephone: (+353+1) 807 3800. Facsimile: 01-807 3844



NSAI

Approval No: **E24*7R0227*5878*01**

- Concise description:

- By Category of lamps:

Front position lamp: A
Rear position lamp: R1

For mounting either outside or inside or both:

Outside

Colour of light emitted (red/selective yellow/white):

Front position lamp: White
Rear position lamp: Red

Number, category and kind of light source:

2, LEDs

Voltage and wattage:

12/24V - 0.5W

Light source module specific identification code:

N/A

Only for limited mounting height of equal to or less than 750 mm above the ground (yes/no):

No

Geometric conditions of installation and relating variations (if any):

Reference axis parallel to the median longitudinal plane of the vehicle and parallel to the bearing plane of the vehicle on the road (see drawings of the information document)

Application of an electronic light source control gear/variable intensity control (a) being part of the lamp (yes/no):

No

(b) being not part of the lamp (yes/no):

No

Input voltage(s) supplied by an electronic light source control gear/variable intensity control:

N/A

Electronic light source control gear/variable intensity control manufacturer and identification number (when the light source control gear is part of the lamp but is not included into the lamp body):

N/A



NSAI

Approval No: **E24*7R0227*5878*01**

Variable luminous intensity (yes/no):

No

The front position lamp², rear position lamp², ~~stop lamp²~~, ~~end-outline marker lamp²~~ is only for use on a vehicle fitted with a tell-tale indication failure:

No

- Function(s) produced by an interdependent lamp forming part of an interdependent lamp system:

Front position lamp
R1 Rear position lamp
R2 Rear position lamp
S1 stop lamp
S2 stop lamp
S3 stop lamp
S4 stop lamp
End-outline marker lamp

~~yes/no²~~
~~yes/no²~~
~~yes/no²~~
~~yes/no²~~
~~yes/no²~~
~~yes/no²~~
~~yes/no²~~
~~yes/no²~~

No
No
No
No
No
No
No
No

- Position of the approval mark:

See drawings of the information document

- Reason(s) for extension (if applicable):

See top of page 1 of certificate for details

- Approval ~~granted/extended/refused/withdrawn~~:

Extended

- Place:

Dublin

- Date:

30th November, 2022

- Signature:



NSAI
Certification
TRANSPORT
DEPARTMENT

- The list of documents deposited with the Administrative Service which has granted approval, is annexed and may be obtained on request.

CT-11-13 Rev 6

NSAI, 1 Swift Square, Northwood, Sundry, Dublin 9, Ireland. Telephone: (+353+1) 807 3800. Facsimile: 01-807 3844

CT-11-13 Rev 6

NSAI, 1 Swift Square, Northwood, Sundry, Dublin 9, Ireland. Telephone: (+353+1) 807 3800. Facsimile: 01-807 3844