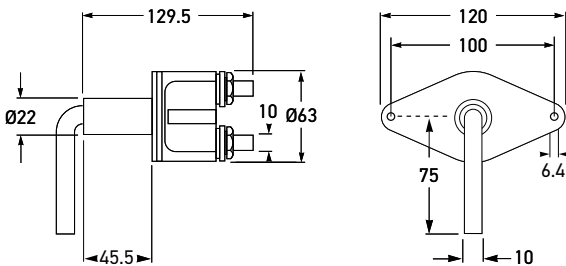




Technology with Vision



NEW RELEASE



All dimensions in mm

## BATTERY MASTER SWITCH AND KEY

Durable heavy duty metal Battery Master Switch and Key, suited for higher amperage uses such as trucks, buses and earth moving equipment. Switch is made in Italy.

Part Number	Description
<b>6EK 008 458-011</b>	<b>Battery Master Switch &amp; Key</b>
Mounting	2 x Ø6mm
Maximum Load	12/24V: 2500A for 10 seconds / 600A for 2 minutes
Max Continuous Load	250A at max. ambient temp of 60°C with 70mm <sup>2</sup> lead connected with ring-type terminals
Termination	2 x 10mm studs Max. torque 22nm
Operating Temperature	-40°C to +85°C
Protection	IP65
Note	Switch not designed for Marine applications. Recommended to be mounted in dry area.

