



INSTRUCTION SHEET
for: **Part No. 2XS 959 855-4xx**

APPLICATION AND
MOUNTING INSTRUCTIONS

REAR END-OUTLINE MARKER LAMP AND REAR POSITION (SIDE) LAMP
Multivolt 12 / 24V DC

Lens Marking and Installation Requirements

This lamp, identified by lens marking (E24) 5878, the backplate marking 02R1, and the HELLA logo was manufactured to comply with ECE Regulation 7 for Rear Position (Side) / Stop Lamps.

- Lamp mounting surface must be vertical to the ground and be square to the longitudinal axis of the vehicle.
- Lamp reference axis can be horizontal or vertical.

Rear End-Outline Marker Lamp

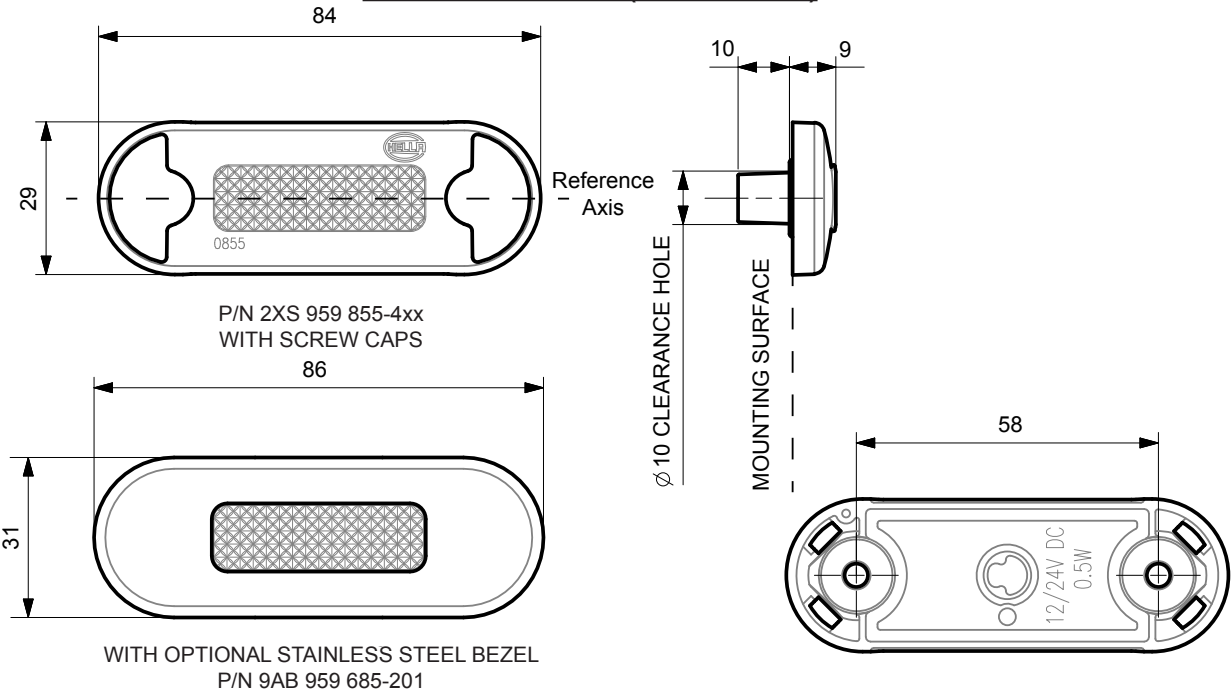
- Lamp must be visible between
Horizontal angle: 0° inwards (parallel with vehicle axis) and 80° outwards
Vertical angle: 5° above and 20° below the horizontal

Rear Position (Side) Lamp

- Lamp must be visible between
Horizontal angle: 45° inwards and 80° outwards
Vertical angle: 15° above and below the horizontal

Please refer to ECE Regulation 48 for more details.

General Dimensions (in millimetres)



Lamp Mounting Instructions

- Lamp should be mounted on a flat surface with no curvature.
- Drill a minimum hole size of Ø10 mm through the mounting surface for the centre cable exit. The lamp can then be used as a template to mark the location of the mounting holes.
- Drill two mounting holes up to Ø5.5 mm at 58 mm centres through the mounting surface.
- Fasten the lamp, with a maximum torque of 2.5 Nm, to the mounting surface using two Ø5 mm screws or bolts (not included). A maximum screw head height of 4 mm is recommended.
- Once the lamp is mounted, clip the screw caps on securely until flush with the lens surface.
- Or alternatively, clip the optional stainless steel bezel securely to the lens (see next page for illustration).

Note: Do not use countersunk screws or overtighten the mounting screws in the plastic lens.
Lamp is fully sealed and has no serviceable components.

HELLA-New Zealand Limited, Auckland, New Zealand



Mounting instruction

Anbauanweisung

Type: 2PF 959 855

Typ:

HELLA Part-No.: (2PF 959 855)
HELLA Bestell-Nr.: (2XA 959 855)

L-DL-FSCT
16.01.2014
Page 1 / Seite 1

Belongs to approval no.: E24 5878

Gehört zu Gen.-Nr.:

Front Position- or Rear Position Lamp for Automobile
Vordere Begrenzungs- oder Schlussleuchte für Kraftfahrzeuge

Light source(s): 2 LEDs
Leuchtquelle(n):

Test voltage: 13.5 V or / oder 28.0 V
Prüfspannung:

Nominal voltage: 12.0 V or / oder 24.0 V
Nennspannung:

Nominal wattage: 0.5 W
Nennleistung:

☆ = Centre of reference in accordance with the ECE-Regulation-No. 7.
Bezugspunkt nach der ECE-Regelung-Nr. 7.

☆ = 76/76 EEC or ECE-Regulation No. 48 (see Annex A).
Bezugspunkt zur Bestimmung der Grenzen der leuchtenden Fläche nach 76/76 EWG bzw. ECE-Regelung Nr. 48.
Markierung s. auf der Abschluss-Schleife. Maße s. Anlage A.

Axis of reference: Parallel to the car centre line and parallel to the road.
Bezugsachse: Parallel zur Fahrzeuglängsachse und parallel zur Fahrbahn.

Mounting of the horizontal installation is illustrated.
Der horizontale Aufbau ist dargestellt.

The lamp may be used for horizontal or vertical mounting installation.
Die Leuchte darf verwendet werden für den horizontalen und vertikalen Einbau.

The lamp may be used with a stainless steel trim or with two screw caps.
Die Leuchte darf verwendet werden mit einem Edelstahlblech oder mit zwei Schraubenabdeckungen.



Mounting instruction

Anbauanweisung

Type: 2PF 959 855

Typ:

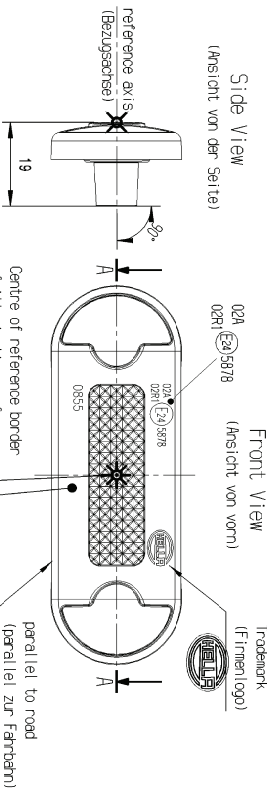
HELLA Part-No.: (2PF 959 855)
HELLA Bestell-Nr.: (2XA 959 855)

L-DL-FSCT
16.01.2014
Page 2 / Seite 2

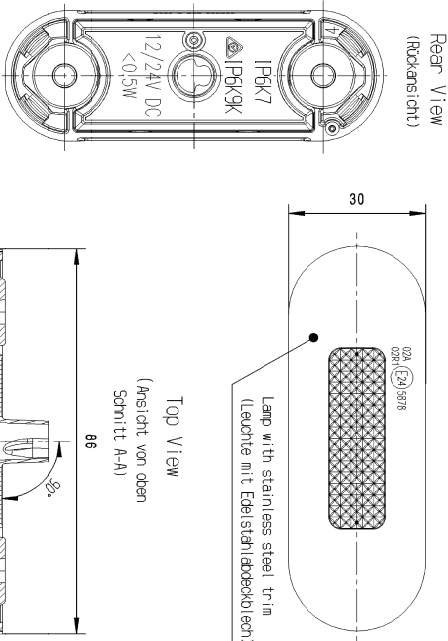
Belongs to approval no.: E24 5878

Gehört zu Gen.-Nr.:

Front Position Lamp for Automobile
Vordere Begrenzungsleuchte für Kraftfahrzeuge



Centre of reference border of illuminating surface (Bezugspunkt für die Grenzen der leuchtenden Flächen)
Lamp with screw caps (Leuchte mit Schraubenabdeckung)

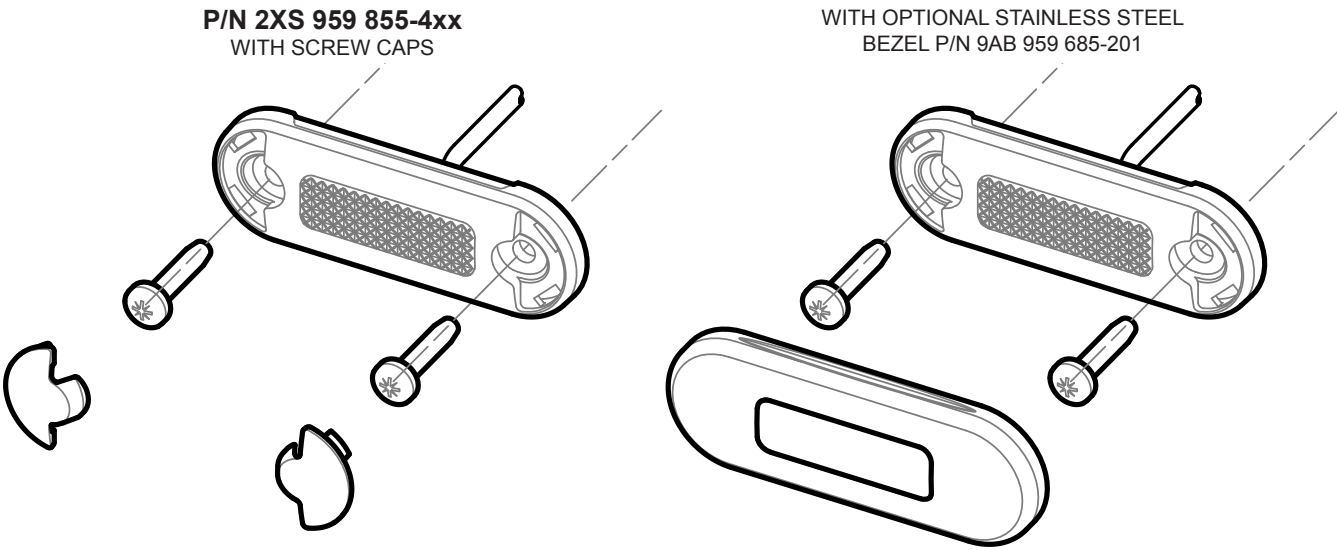


The lamp may be used for horizontal or vertical mounting installation.
Die Leuchte darf verwendet werden für den horizontalen und vertikalen Einbau.

The device must be mounted according to the enclosed fitting documents (e.g. sketch + Annex A).
Der Air bzw. Einbau der Geräte hat nach anliegenden Air bzw. Einbauunterlagen (z.B. Skizze und Anlage A) zu erfolgen.



INSTRUCTION SHEET
for: **Part No. 2XS 959 855-4xx**



Wiring Colour Coding

The LED lamp is multi voltage capable for optimum brightness in 12 and 24 Volt systems. LED modules are polarity conscious. Reverse polarity will not damage this product but will inhibit its function. HELLA recommends wire connections be soldered, and heat shrink tubing applied to seal the joint.

Colour	Connect to	Power Consumption
Black	Earth (-)	-
Red	Positive (+)	0.5 W

NB: Lamp must be protected by a fuse rated at 2 amperes maximum.



ECE TYPE-APPROVAL CERTIFICATE

Communication concerning approval granted of
a type of device pursuant to
Regulation No. 7.



Approval No.: **E24 7R-025878**
Reason for extension: - N/A
Extension No.: N/A

- Trade name or mark of the device: **HELLA**
- Manufacturer's name for the type of device:
Variant(s):
2PF 959 855
- with stainless steel trim
- with screw caps
- Manufacturer's name and address:
Hella New Zealand Limited
81-83 Ben Lomond Crescent, Pukununga
NZ Auckland, New Zealand.
- If applicable, name and address of manufacturer's representative:
Hella KGaA,
Rixebecker Straße 75,
DE-59552 Lippstadt,
Germany.
15.01.2014
- Submitted for approval on:
F.A.K.T.S.r.l.,
Via Lihos, 53,
I-25086 Rezzato (BS),
Italy.
22.01.2014
- Date of test report issued by that service:
IT14/0042-00, IT14/0043-00
- Number of report issued by that service:



Approval No.: **E24 7R-025878**
Extension No.: N/A

9. Concise description:
9.1 By Category of lamps:
- Front position lamp: A**
Rear position lamp: R1

For mounting either outside or inside or both:

Outside.

Colour of light emitted (red/selective yellow/white):

Front position lamp: White
Rear position lamp: Red

Number, category and kind of light source:

2, LEDs

Voltage and wattage:

12/24V – 0,5W

Light source module specific identification code:

N/A

Only for installation on M1 and/or N1 category vehicles:

No.

Geometric conditions of installation and relating variations (if any):

Reference axis parallel to the median longitudinal plane of the vehicle and parallel to the bearing plane of the vehicle on the road (see drawings of the information folder).

Only for limited mounting height of equal to or less than 750 mm above the ground (~~yes/no~~):

No.

Application of an electronic light source control gear/variable intensity control
(a) being part of the lamp (~~yes/no~~):

No.

(b) being not part of the lamp (~~yes/no~~):

No.

Input voltage(s) supplied by an electronic light source control gear/variable intensity control:

N/A



Approval No.: **E24 7R-025878**
Extension No.: N/A

Electronic light source control gear/variable intensity control manufacturer and identification number (when the light source control gear is part of the lamp but is not included into the lamp body):

N/A

Variable luminous intensity (~~yes/no~~):

No.

9.2 Function(s) produced by an interdependent lamp forming part of an interdependent lamp system:

No.

10. Position of the approval mark:

See drawings of the information folder.

11. Reason(s) for extension (if applicable):

N/A

12. Approval granted ~~extended/refused/withdrawn~~:

Granted.

13. Place:

Dublin.

14. Date: **3rd February 2014**

15. Signature:



16. The list of documents deposited with the Administrative Service which has granted approval, is annexed and may be obtained on request.

17. Remarks:

N/A