



Fog and Driving Lamps

The choice of professional and recreational drivers, Hella Fog and Driving Lamps provide superior illumination and enhanced safety expected from Hella lighting products.



Fog and Driving Lamps

<i>Fog and Driving Lamps Introduction</i>	74-75
<i>Rallye 4000</i>	76-77
<i>Rallye 4000 Compact</i>	78
<i>Micro DE Fog</i>	79
<i>Jumbo 220 Series</i>	80
<i>Jumbo 320 Series</i>	81
<i>Comet 500</i>	82
<i>Comet 550</i>	83
<i>Comet 450</i>	84
<i>Comet 100</i>	85
<i>Comet 200</i>	86
<i>Comet 300</i>	87
<i>FF 50</i>	88
<i>FF 75</i>	89



**SAFETY through
Vision and Innovation**

Fog and Driving Lamps

Innovative Lighting Technology

Professional drivers have relied for many decades on the superior performance of Hella driving lamps to increase the range and distance of their forward vision at night and in adverse weather conditions.

Driving for many hours at night can be tiring. Good forward lighting has long been recognised as an effective method to reduce fatigue and the loss of concentration.

Hella offers driving and fog lamps that suit even the most demanding applications engineered to Original Equipment Manufacturer (OEM) standards and trusted by millions of motorists around the world.



The high standard of Hella Auxillary Driving lamps is confirmed time and again in independent tests of major international automotive magazines.

Before a new Hella design is passed for production and sale it has to pass stringent endurance tests.

1. **Function even when driving in adverse conditions and in extreme terrain.**

Spraying with mud and water to simulate off road and cross country driving.

2. **Withstand harsh vibration and shock.**

Vibration testing with random as well as at fixed frequencies known to stress materials. This simulated tough road conditions such as cobblestone pavement and potholes.

3. **Freezing cold and fierce heat are no problem.**

The Driving Lamps are subjected to extreme temperature variations between -40 degrees C to + 80 degrees C.

4. **Watertight even in extreme weather.**

The driving lamps are subjected to water spray at pressures of 4 bar to simulate driving through torrential rain.



Protecting Your Lights from Damage

The best way to protect your Hella driving lights from damage is to use an authentic Hella protective cover – only Hella covers are designed to securely protect Hella lamps.

Lighting Tips For Safer Driving

1. Always get a professional alignment after you change a headlamp, driving lamp or replace a bulb.
2. Always use a bulb of the recommended wattage in your driving lamps. Using a higher wattage bulb than recommended will not increase the light output very much and may produce too much heat. In some cases this may cause damage to the lamps.
3. If you are blowing bulbs regularly, and/or your lights are not as bright as they used to be, try fitting a relay. A voltage drop of just 1 volt, equates to a loss of 20% of light output. 12V bulbs are designed to operate at 13.5V.
4. Don't forget to remove the driving lamp protective covers before turning your lights on, or use clear protective covers which can be left on at all times.



Safer Driving with Hella's Advanced Technology

Lights with Parabolic Reflector Systems

These Lights are designed with a reflector in the mathematically defined shape of a paraboloid. The reflector captures the luminous flux emitted by the bulb and reflects this forward as an almost parallel light beam.

The specific light distribution is produced by optical lenses and prisms in the profiled cover lens which precisely directs the light to the area to be illuminated. Good optic design produces an evenly lit surface whereas spotty appearance is the result of optics of lesser quality.

Very efficient headlamps with Parabolic Reflector Systems require a large reflector in order to capture the maximum luminous flux from the bulb.

Lights with Free-Form (FF) Reflector Technology

Lights incorporating Free-Form (FF) Technology are based on complex mathematical calculations. Over 50,000 individual surfaces of the reflector are calculated and formed to precisely reflect the light to the road in front of the vehicle. The outer cover lens contains minimal optic elements.

A well designed headlight based on Free-Form (FF) Technology produces a very evenly lit area in front of the vehicle which significantly contributes to safer driving.

Micro DE

The functional principle of a DE 'Dixial Ellipsoid' lamp is similar to that of a slide projector. An ellipsoid Free-Form (FF) reflector directs the light to a focused glass lens, which bundles and projects it onto the road. A shield positioned between the reflector and the lens provide a very sharp cut-off. The result - concentrated light output with a clear cut-off ensuring a smooth light distribution with very little stray light. DE Technology allows smaller dimensions with a higher luminance compared to a parabolic lamp.

Pencil Beam (for long-range illumination)

The Pencil Beam driving lamp is designed for maximum long-range illumination, providing improved visibility of objects and traffic situations further in the distance. Particularly suitable for off-road vehicles – when objects further in the distance must be recognised quickly to maximise reaction time for the driver.

Spread Beam (for a full field of vision)

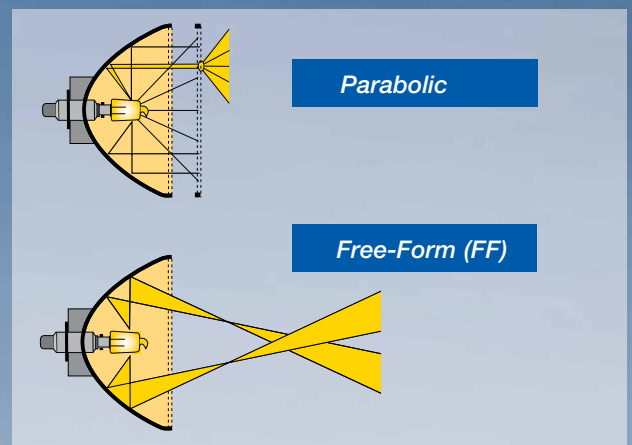
The Spread Beam driving lamp provides good illumination of both – the area immediately in front of the vehicle and the distance ahead. Particularly suitable for road vehicles, such as trucks and buses – when fatigue-free driving is more important than recognising objects in the distance.

Hella Fog Lamps

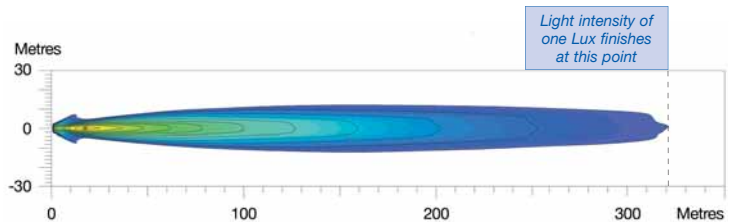
(for safe driving in inclement weather)

Fog, rain or snow can reflect the light of standard driving lights back into your eyes, creating a dangerous glare that makes it difficult to recognise hidden hazards.

Hella fog lamps are equipped with specially designed reflectors, which evenly illuminate the width of the road, providing you with a wide path of light for more safety through clearer visibility. Particularly suitable for any vehicle driving through humid or moist areas where fog, rain or snow is common.



ISOLUX CHARTS



Isolux charts represent the beam pattern and the distance illuminated on a flat road surface using a single lamp. The colour shades represent the distance in metres from the lamp. The dark blue shade indicates an illumination level of one Lux (320 metres in the above diagram). Hella's technical data is produced from Hella's own test facilities, laboratories and light tunnels. One Lux represents the intensity of the light of the full moon (under clear atmospheric conditions) or sufficient light by which to read a newspaper.



1366

Spread Beam Driving Lamp - 12 Volt



DESCRIPTION The Rallye 4000 range features a sturdy zinc die-cast metal body and bracket for excellent strength and vibration resistance. The lamp bracket has a large contact surface making the lamp stable in rough conditions. Suitable for professional, commercial and off-road drivers.

MOUNTING Upright or pendant.

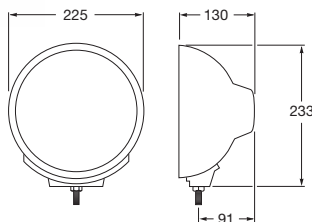
POWER CONSUMPTION 55W

BULBS TO SUIT

	12V	24V
Driving lamp:	C1255	C2470
Position lamp:	W125	W245

COMPLIANCE E1 44484

Note Includes protective cover P/N 8125 and allen keys.
(See page 95 for Pencil Beam version - P/N 1365)



1165

Fog Lamp, White Optic - 12 Volt



DESCRIPTION The Rallye 4000 range features a sturdy zinc die-cast metal body and bracket for excellent strength and vibration resistance. The lamp bracket has a large contact surface making the lamp stable in rough conditions. Suitable for professional, commercial and off-road drivers.

MOUNTING Upright or pendant.

POWER CONSUMPTION 55W

BULBS TO SUIT

12V	YC1255
24V	YC2470

COMPLIANCE E1 18245

Note Includes protective cover P/N 8125 and allen keys.



8125

Protective Cover

8141

Clear Protective Cover

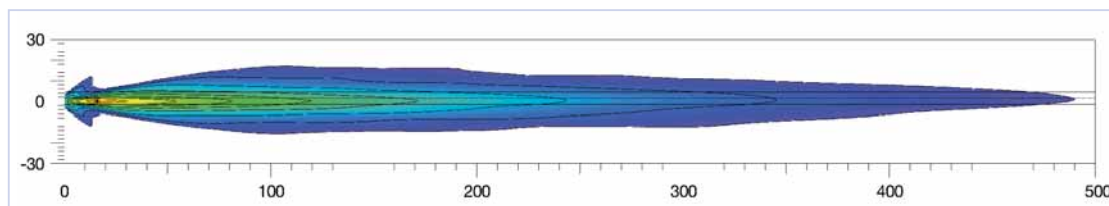
8126

Protective Grille

SPARE PARTS

9.1165.01	Fog lamp insert
9.1366.01	Spread beam driving lamp insert
9.1366.02	Spread beam driving lamp insert- clear lens
9.1365.05	Wiring loom
9.1365.07	Black lens retaining rim
9.1365.06	Knurled screw set (2)

Rallye 4000 Spread Beam Distance: Recorded with single lamp. Distance in metres.

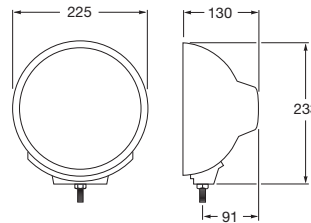


1366CHROME

Chrome Spread Beam Driving Lamp - 12 Volt



DESCRIPTION	The Rallye 4000 range features a spread beam driving lamp with clear glass optics. Chrome plated zinc die-cast metal housing.		
MOUNTING	Upright or pendant.		
POWER CONSUMPTION	55W		
BULBS TO SUIT	12V	24V	
	Driving lamp:	C1255CB	C2470
	Position lamp:	W125	W245
SPARE PARTS	9.1366.02	Spread beam insert	
	9.1366.07	Chrome lens retaining rim	
COMPLIANCE	Ⓔ 44484		



FOG AND DRIVING

1366C-BLUE

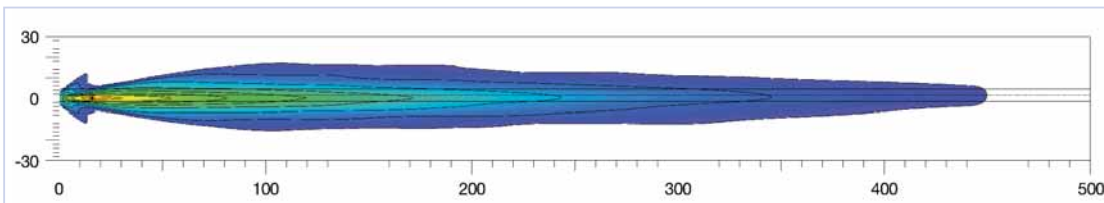
Chrome Spread Beam Driving Lamp with Blue Lens - 12 Volt



DESCRIPTION	The Rallye 4000 range features a spread beam driving lamp with blue clear glass optics. Chrome plated zinc die-cast metal housing. Suitable for colourless bulbs only.		
MOUNTING	Upright or pendant.		
POWER CONSUMPTION	55W		
BULBS TO SUIT	12V	24V	
	Driving lamp:	C1255	C2470
	Position lamp:	W125	W245
SPARE PARTS	9.1366C.01BL	Spread beam insert with blue lens	
	9.1366C.07	Chrome lens retaining rim	
COMPLIANCE	Ⓔ 44484		



Rallye 4000 Blue Spread Beam Distance: Recorded with single lamp. Distance in metres.





12V Bulb Incl.

1378

Spread Beam Driving Lamp - 12 Volt

ADR COMPLIANCE

DESCRIPTION 170mm compact version of the Rallye 4000 driving lamp, with clear Free-Form (FF) reflector lens design. Sturdy zinc die-cast weatherproof black metal housing.

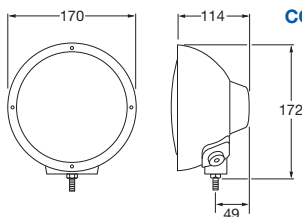
MOUNTING Upright.

POWER

CONSUMPTION 55W

BULBS TO SUIT 12V C1255
24V C2470

COMPLIANCE (E) 1901



NEW ENTRY



12V Bulb Incl.

1378CHROME

Chrome Spread Beam Driving Lamp - 12 Volt

ADR COMPLIANCE

DESCRIPTION Spread beam driving lamp with clear glass optics. Chrome plated zinc die-cast weatherproof metal housing.

MOUNTING Upright.

POWER

CONSUMPTION 55W

BULBS TO SUIT 12V C1255
24V C2470

COMPLIANCE (E) 1901



12V Bulb Incl.

1178

Fog Lamp, White Optic - 12 Volt

ADR COMPLIANCE

DESCRIPTION Clear Free-Form (FF) reflector lens design, 170mm compact version of the Rallye 4000 driving lamp, with sturdy zinc die-cast weatherproof black metal housing.

MOUNTING Upright.

POWER

CONSUMPTION 55W

BULBS TO SUIT 12V CA1255
24V CA2470

COMPLIANCE (E) 1901



8115

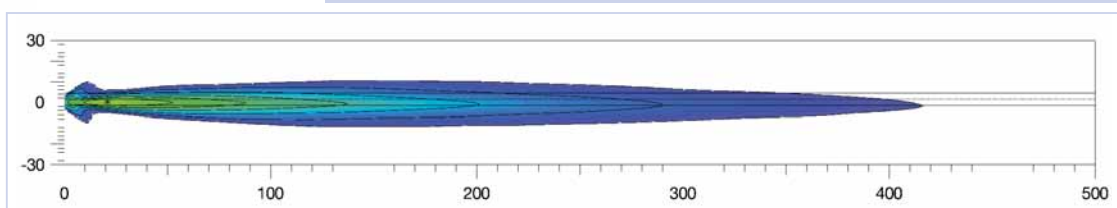
Protective Cover

8155

Clear Protective Cover

SPARE PARTS 9.1378.01 Spread beam driving lamp insert
9.1178.01 Fog lamp insert
9.1365.06 Knurled screw set (2)

Rallye 4000 Compact Spread Beam Distance: Recorded with single lamp. Distance in metres.

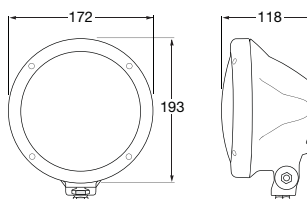


1369

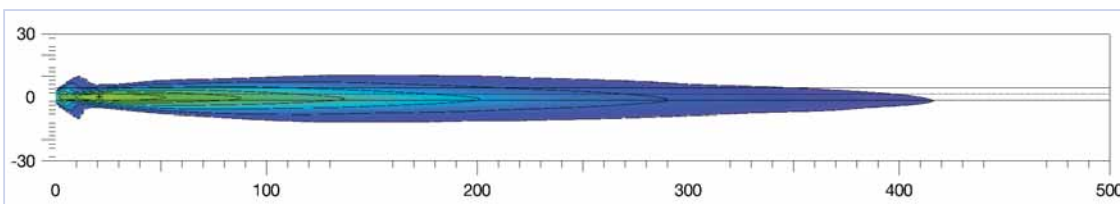
Spread Beam Driving Lamp - 12 Volt



- DESCRIPTION** Rallye 3003 compact spread beam driving lamp, with Clear Free-Form (FF) reflector lens design and high boost reflector.
- VOLTAGE** 12V
- POWER CONSUMPTION** 55W
- BULBS TO SUIT** 12V C1255
24V C2470
- COMPLIANCE** E1 1901



Rallye 3003 Spread Beam Distance: Recorded with single lamp. Distance in metres.

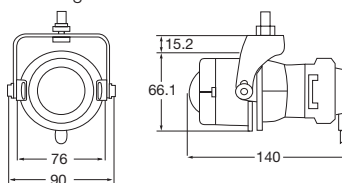


1115

Fog Lamp, White Optic - 12 Volt



- DESCRIPTION** Micro DE high performance compact fog lamp featuring a focused glass lens and modern Free-Form (FF) reflector. Hella's smallest auxiliary lamp is ideal for front spoilers. Housing and reflector made from magnesium.
- MOUNTING** Upright or pendant. Ideal for installations in or below front apron or front spoilers with limited mounting space. Standard mounting bracket and pre-assembled wiring harness included.
- POWER CONSUMPTION** 55W
- BULB TO SUIT** YC1255
- COMPLIANCE** E1 877



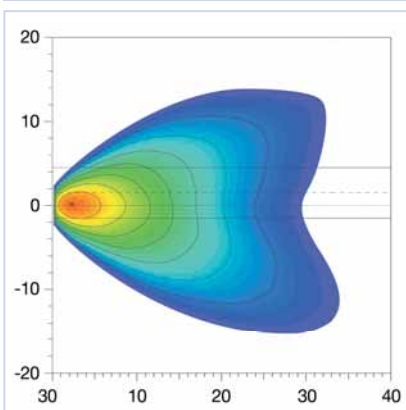
9.1115.08

9.1115.08

Mounting Bracket

- DESCRIPTION** Adjustable mounting bracket to suit Micro DE lamps.

Micro DE Fog Beam Distance: Recorded with single lamp. Distance in metres.





12V Bulb Incl.

1311

Spread Beam Driving Lamp - 12 Volt

ADR COMPLIANCE

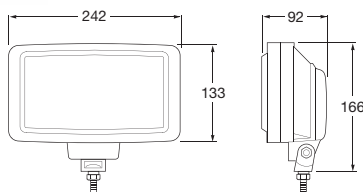
DESCRIPTION For trucks and large cars, the spread beam driving lamp has powerful light output and a housing made of shock-resistant plastic. Experienced drivers all over the world put their trust in this lamp.

MOUNTING Upright or pendant.

POWER CONSUMPTION 55W
BULBS TO SUIT 12V YC1255
 24V YC2470

COMPLIANCE E1 44444

Note Includes protective cover P/N 8124.



12V Bulb Incl.

1111

Fog Lamp, White Optic - 12 Volt

ADR COMPLIANCE

DESCRIPTION For trucks and large cars, powerful light output and a housing made of shock-resistant plastic. Experienced drivers all over the world put their trust in this lamp.

MOUNTING Upright or pendant.

POWER CONSUMPTION 55W
BULBS TO SUIT 12V YC1255
 24V YC2470

COMPLIANCE E1 18231

Note Includes protective cover P/N 8124.



8124

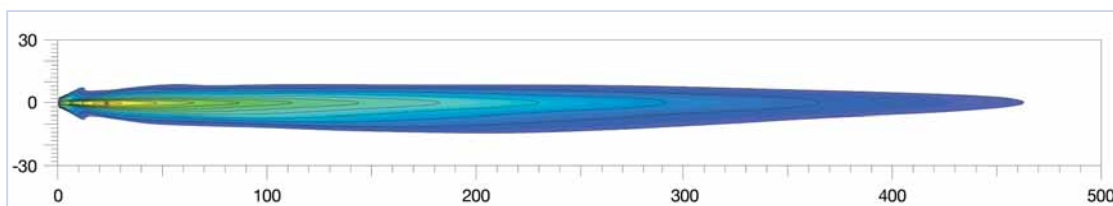
Protective Cover

8139

Clear Protective Cover

SPARE PARTS 9.1111.01 Fog lamp insert
 9.1111.02 Fog lamp insert - amber
 9.1311.07 Retaining rim black

Jumbo 220 Spread Beam Distance: Recorded with single lamp. Distance in metres.



1318	<i>Spread Beam Driving Lamp - 12 Volt</i>		
1318-24V	<i>Spread Beam Driving Lamp - 24 Volt</i>		

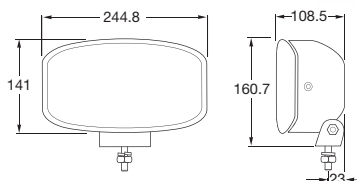
DESCRIPTION Free-Form (FF) reflector, clear glass lens spread beam driving lamp, with optimized light output due to the magnesium Free-Form (FF) reflector. Specially developed for professionals who are frequently on the road and off-road.

MOUNTING Upright or pendant.

POWER CONSUMPTION 55W

BULBS TO SUIT 12V CA1255
24V CA2470

COMPLIANCE



1318-BLUE	<i>Spread Beam Driving Lamp with Blue Lens - 12 Volt</i>		
------------------	--	--	--

DESCRIPTION The Jumbo 320 Blue successfully combines powerful lighting performance with modern 'Cool Blue' tinted glass lens design, making it the ideal supplement to a standard driving headlamp. The blue tinted lens gives the lamp an unmistakable and individual appearance without reducing its outstanding luminous efficiency. When used with colourless bulbs, the light colour remains white.

MOUNTING Upright or pendant.

POWER CONSUMPTION 55W

BULBS TO SUIT 12V CA1255
24V CA2470

COMPLIANCE



Note Suitable for colourless bulbs only.

1118	<i>Fog Lamp, White Optic - 12 Volt</i>		
-------------	--	--	--

DESCRIPTION High-performance fog lamp featuring modern clear glass lens and Free-Form (FF) reflector.

MOUNTING Upright or pendant.

POWER CONSUMPTION 55W

BULBS TO SUIT 12V CA1255
24V CA2470

COMPLIANCE

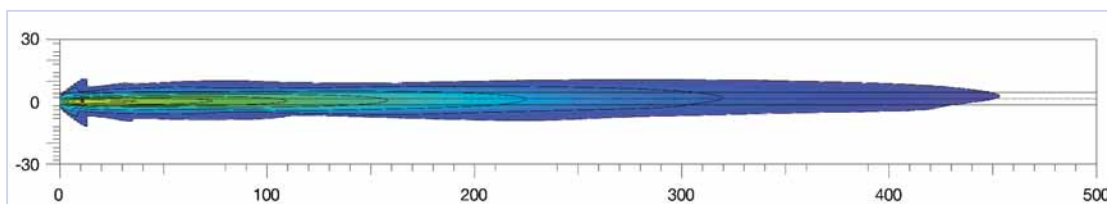


8117	<i>Protective Cover</i>
8153	<i>Clear Protective Cover</i>

SPARE PARTS 9.1318.01 Spread beam driving lamp insert
9.1318.01B Spread beam driving lamp insert
9.1118.01 Fog lamp insert



Jumbo 320 Spread Beam Distance: Recorded with single lamp. Distance in metres.



FOG AND DRIVING



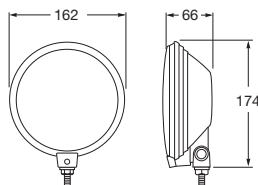
1308

Spread Beam Driving Lamp - 12 Volt



DESCRIPTION	Spread beam driving lamp with hardened glass lens and tough plastic body.	
MOUNTING	Upright.	
POWER CONSUMPTION	55W	
BULBS TO SUIT	12V	YC1255
	24V	YC2470
COMPLIANCE	E1 44404	

Note Includes protective cover P/N 8121.



1108

Fog Lamp, White Optic - 12 Volt



1108-2

Fog Lamp, Amber Optic - 12 Volt



DESCRIPTION	Fog beam lamp with hardened glass lens and tough plastic body.	
MOUNTING	Upright.	
POWER CONSUMPTION	55W	
BULBS TO SUIT	12V	YC1255
	24V	YC2470
COMPLIANCE	E1 18213	

Note Includes protective cover P/N 8121.



8121

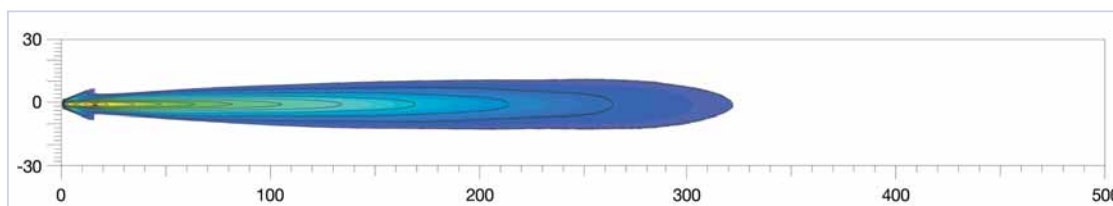
Protective Cover

8137

Clear Protective Cover

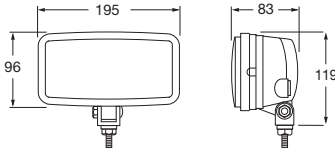
SPARE PARTS	9.1108.01	Fog lamp insert
	9.1308.01	Driving lamp insert
	9.1308.08	Mounting bracket assembly

Comet 500 Spread Beam Distance: Recorded with single lamp. Distance in metres.



1309 Spread Beam Driving Lamp - 12 Volt ADR COMPLIANCE 12V Bulb Incl.

DESCRIPTION Spread beam driving lamp with hardened glass lens and tough plastic body.
MOUNTING Pendant or upright.
POWER CONSUMPTION 55W
BULBS TO SUIT 12V YC1255
 24V YC2470
COMPLIANCE 44410
Note Includes protective cover P/N 8122.



FOG AND DRIVING

1109 Fog Lamp, White Optic - 12 Volt ADR COMPLIANCE 12V Bulb Incl.

1109-2 Fog Lamp, Amber Optic - 12 Volt ADR COMPLIANCE 12V Bulb Incl.

DESCRIPTION Fog beam lamp with hardened glass lens and tough plastic body.
MOUNTING Pendant or upright.
POWER CONSUMPTION 55W
BULBS TO SUIT 12V YC1255
 24V YC2470
COMPLIANCE 18216
Note Includes protective cover P/N 8122.



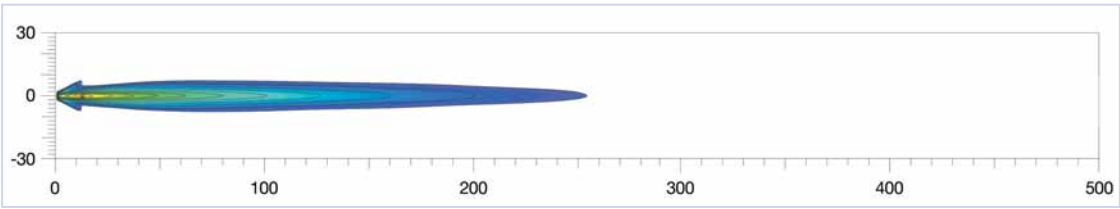
8122 Protective Cover

8138 Clear Protective Cover

SPARE PARTS 9.1309.01 Driving lamp insert
 9.1308.08 Mounting bracket assembly



Comet 550 Spread Beam Distance: Recorded with single lamp. Distance in metres.





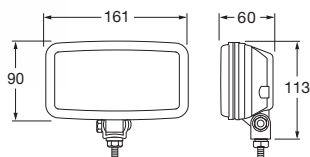
1310

Spread Beam Driving Lamp - 12 Volt



DESCRIPTION	Spread beam driving lamp with hardened glass lens and tough plastic body.
MOUNTING	Pendant or upright.
POWER CONSUMPTION	55W
BULB TO SUIT	YC1255
COMPLIANCE	E1 44442

Note Includes protective cover P/N 8123.



1110

Fog Lamp, White Optic - 12 Volt



1110-2

Fog Lamp, Amber Optic - 12 Volt



DESCRIPTION	Fog beam lamp with hardened glass lens and tough plastic body.
MOUNTING	Pendant or upright.
POWER CONSUMPTION	55W
BULB TO SUIT	YC1255
COMPLIANCE	E1 18227

Note Includes protective cover P/N. 8123.



8136

8123

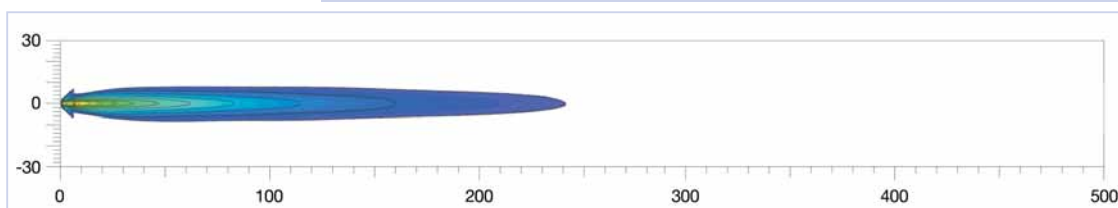
Protective Cover

8136

Clear Protective Cover

SPARE PARTS	9.1110.01	Fog lamp insert
	9.1110.02	Fog lamp insert - amber
	9.1308.08	Mounting bracket assembly
	9.1310.01	Driving lamp insert
	9.1310.09	Lamp housing

Comet 450 Spread Beam Distance: Recorded with single lamp. Distance in metres.



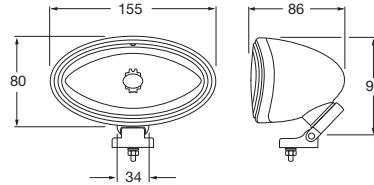
1312

Spread Beam Driving Lamp - 12 Volt



- DESCRIPTION** Spread beam driving lamp with modern clear hardened glass lens. The innovative Free-Form (FF) technology ensures concentrated light output.
- MOUNTING** Upright or pendant.
- POWER CONSUMPTION** 55W
- BULB TO SUIT** YC1255
- COMPLIANCE** E1 651

Note: Includes protective cover P/N 8100.



1112

Fog Lamp, White Optic - 12 Volt



- DESCRIPTION** Fog beam lamp with modern clear hardened glass lens. The innovative Free-Form (FF) technology ensures concentrated light output.
- MOUNTING** Upright or pendant.
- POWER CONSUMPTION** 55W
- BULB TO SUIT** YC1255
- COMPLIANCE** E1 650

Note: Includes protective cover P/N 8100.



8100

Protective Cover

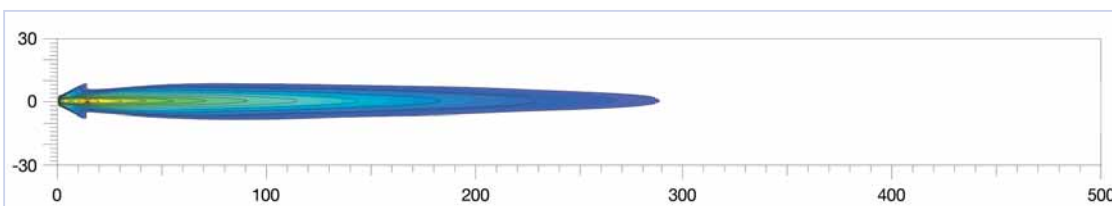
8143

Clear Protective Cover

- | | | |
|--------------------|-----------|---------------------------|
| SPARE PARTS | 9.1112.01 | Fog lamp insert - white |
| | 9.1312.01 | Driving lamp insert |
| | 9.1312.08 | Mounting bracket assembly |



Comet 100 Spread Beam Distance: Recorded with single lamp. Distance in metres.





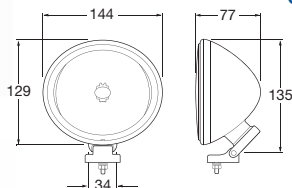
1313

Spread Beam Driving Lamp - 12 Volt



- DESCRIPTION** Spread beam driving lamp with modern clear hardened glass lens. The innovative Free-Form (FF) technology ensures concentrated light output.
- MOUNTING** Upright or pendant.
- POWER CONSUMPTION** 55W
- BULBS TO SUIT** 12V YC1255
24V YC2470
- COMPLIANCE** E1 645

Note Includes protective cover P/N 8101.



1313-BLUE

Spread Beam Driving Lamp, Blue Lens - 12 Volt



- DESCRIPTION** Modern 'Cool Blue' lens design version of 1313. The light colour remains white.
- MOUNTING** Upright or pendant.
- BULB TO SUIT** YC1255
- COMPLIANCE** E1 647



1113

Fog Lamp, White Optic - 12 Volt



- DESCRIPTION** Fog beam lamp with modern clear hardened glass lens. The innovative Free-Form (FF) technology ensures concentrated light output.
- MOUNTING** Upright or pendant.
- POWER CONSUMPTION** 55W
- BULBS TO SUIT** 12V YC1255
24V YC2470
- COMPLIANCE** E1 645

Note Includes protective cover P/N 8101.



8101

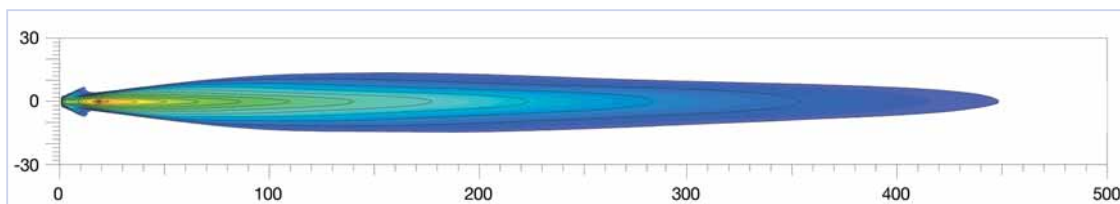
Protective Cover

8144

Clear Protective Cover

- SPARE PARTS**
- | | |
|------------|-------------------------------|
| 9.1113.01 | Fog lamp insert - white |
| 9.1313.01 | Driving lamp insert |
| 9.1313.01B | Blue lens driving lamp insert |
| 9.1312.08 | Mounting bracket assembly |

Comet 200 Spread Beam Distance: Recorded with single lamp. Distance in metres.



1314

Spread Beam Driving Lamp - 12 Volt



DESCRIPTION Spread beam driving lamp with modern clear hardened glass lens. The innovative Free-Form (FF) technology ensures concentrated light output.

MOUNTING Upright or pendant.

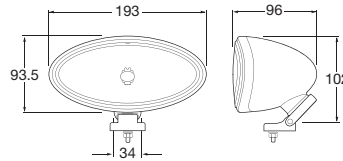
POWER

CONSUMPTION 55W

BULBS TO SUIT 12V YC1255
24V YC2470

COMPLIANCE E1 649

Note Includes protective cover P/N 8102.



1314-BLUE

Spread Beam Driving Lamp, Blue Lens - 12 Volt



DESCRIPTION Modern 'Cool Blue' lens design version of 1314. The light colour remains white.

MOUNTING Upright or pendant.

BULB TO SUIT YC1255

COMPLIANCE E1 649



1114

Fog Lamp, White Optic - 12 Volt



DESCRIPTION Fog beam lamp with modern clear hardened glass lens. The innovative Free-Form (FF) technology ensures concentrated light output.

MOUNTING Upright or pendant.

POWER

CONSUMPTION 55W

BULBS TO SUIT 12V YC1255
24V YC2470

COMPLIANCE E1 648

Note Includes protective cover P/N 8102.



8102

Protective Cover

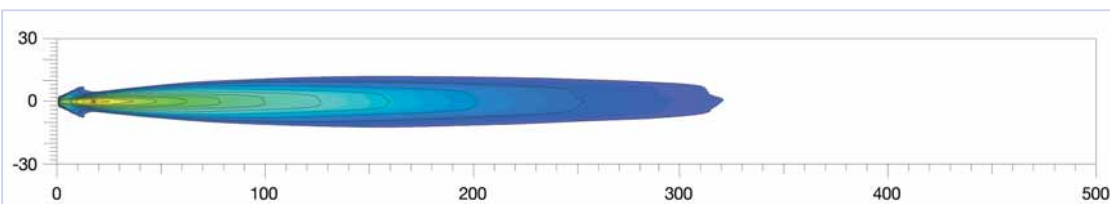
8145

Clear Protective Cover

SPARE PARTS	9.1114.01	Fog lamp insert - white
	9.1314.01	Driving lamp insert
	9.1314.01B	Blue lens driving lamp insert
	9.1312.08	Mounting bracket assembly



Comet 300 Spread Beam Distance: Recorded with single lamp. Distance in metres.





1322



1322-BLUE



FF 50



1322

Spread Beam Driving Lamp - 12 Volt



1322-BLUE

Spread Beam Driving Lamp, Blue Lens - 12 Volt



DESCRIPTION Compact driving lamp featuring modern clear lens design and Free-Form (FF) reflector.

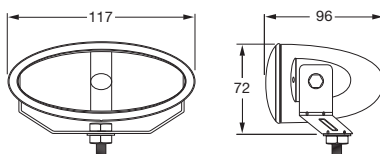
MOUNTING Upright or pendant.

POWER

CONSUMPTION 55W

BULB TO SUIT CA1255

COMPLIANCE E1 1210



1122

Fog Lamp, White Optic - 12 Volt



DESCRIPTION Compact fog lamp featuring modern clear lens design and Free-Form (FF) reflector.

MOUNTING Upright or pendant.

POWER

CONSUMPTION 55W

BULB TO SUIT CA1255

COMPLIANCE E1 1209



5613

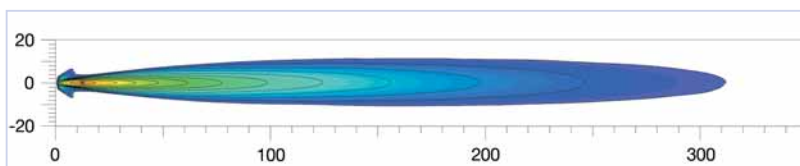
Halogen Driving Lamp Kit FF 50 - 12 Volt

CONTENTS Two lamps and installation parts.

8147

Clear Protective Cover


FF50 Spread Beam Distance: Recorded with single lamp. Distance in metres.



FF 75

1323 Spread Beam Driving Lamp - 12 Volt  

1323-BLUE Spread Beam Driving Lamp, Blue Lens - 12 Volt  

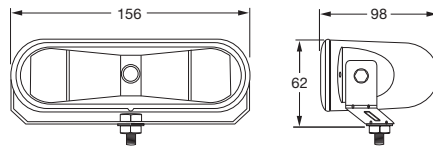
DESCRIPTION Compact driving lamp featuring modern clear lens design and Free-Form (FF) reflector.
MOUNTING Upright or pendant.
POWER CONSUMPTION 55W
BULB TO SUIT CA1255
COMPLIANCE 



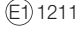
1323



1323-BLUE



1123 Fog Lamp, White Optic - 12 Volt  

DESCRIPTION Compact fog lamp featuring modern clear lens design and Free-Form (FF) reflector.
MOUNTING Upright or pendant.
POWER CONSUMPTION 55W
BULB TO SUIT CA1255
COMPLIANCE 



5615 Halogen Driving Lamp Kit FF 75 - 12 Volt

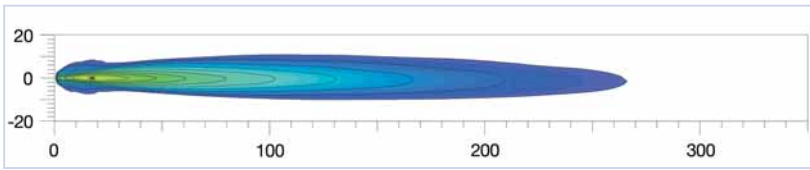
CONTENTS Two lamps and installation parts.



8148 Clear Protective Cover



Spread Beam Distance: Recorded with single lamp. Distance in metres.



FOG AND DRIVING