



Emergency Lighting and Signal Warning Lamps

Hella offers a comprehensive range of Emergency Lighting Products that meets the requirements of a modern Emergency Response Fleet.

To travel safely at high speeds in busy city traffic and through intersections requires effective lighting products which deliver a high degree of conspicuity by causing discomfort glare.

A large range of Signal Warning Lamps for a large number of applications is also listed in this section.





Emergency Lighting and Signal Warning Lamps

<i>Emergency Lighting and Signal Warning Lamps Introduction</i>	122-123
<i>LED Multi-flash Signal Lamps</i>	124-125
<i>LED Signal Warning Lamps</i>	126-127
<i>LED Beacons</i>	128-129
<i>LED Highlighter™ Light Bars</i>	130
<i>Light Bars</i>	131-132
<i>Revolving Beacons KL 7000</i>	133
<i>Revolving Beacons KL 700/KL 710</i>	134
<i>Revolving Beacons KL Junior</i>	135
<i>Revolving Beacons KL Junior Plus/KL 8000</i>	136
<i>Rotoflex/Rotofix</i>	137
<i>Strobe Beacons Firebolt Plus/Pulsator 451</i>	138
<i>Remote Strobe/Strobe Tubes</i>	139
<i>Flashing Beacons KL 30</i>	140
<i>Revolving Beacon Spare Parts</i>	141



SAFETY through
Vision and Innovation

Hella Emergency Lighting

New Levels of Performance and Reliability

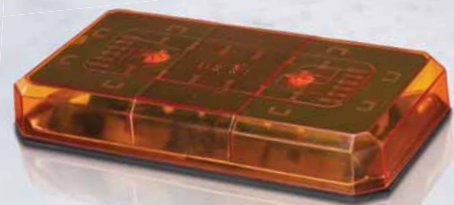
Hella's range of Emergency Lighting and Signal Warning Lamps provide new levels of performance and reliability for situations where a powerful warning light is required to attract attention.

Hella's revolving and LED lamps offer combinations of dimensions, lens colours, methods of attachment, luminous intensities and supply voltages, providing a complete range to suit all conditions and performance requirements.

Light Technology

A particular advantage of Hella rotating beacons is the high quality light technology. The high gloss vapour coated parabolic reflector and bulb form one unit, utilising the full light output from the Halogen bulb. This optimum utilisation of the available light is efficiently focused by computer designed light domes. The light signal is more intensive and ensures a significantly higher awareness, therefore offering maximum warning efficiency and safety.

The advanced ventilation principle prevents the light dome and reflector from fogging up – providing full functional safety at all times, while maintenance-free drive bearing and double belt technology ensure maximum running smoothness. The excellent start-up characteristics from ambient temperatures of -40°C to $+60^{\circ}\text{C}$ ensure instant activation when needed.



CAUTION: Mounting of Magnetic Base Revolving Lamps

Due to Hella being unable to control the condition of the mounting surface or the potential forces that may occur during deceleration, fitment of warning lamps with a magnetic base cannot be recommended for use on moving vehicles.

LED High Intensity Emergency Lighting

Following the success of Hella's advanced LED technology for the commercial transport industry, Hella has introduced high intensity LED Signal Warning Lamps specially designed for emergency services and special applications.

Features include long service life, reduced maintenance requirements, high reliability and outstanding light performance. The range of warning lamps has 10 programmable flash modes, and can be synchronised to flash alternatively or in unison.



Beacons and Optical Warning Systems

Advantages:

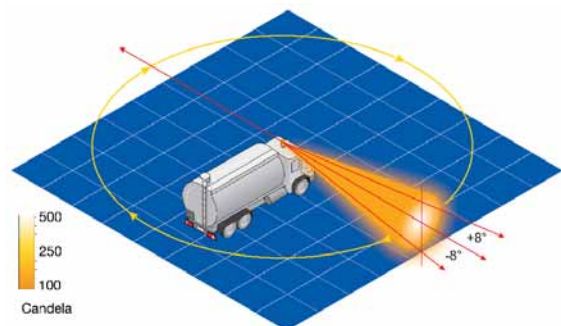
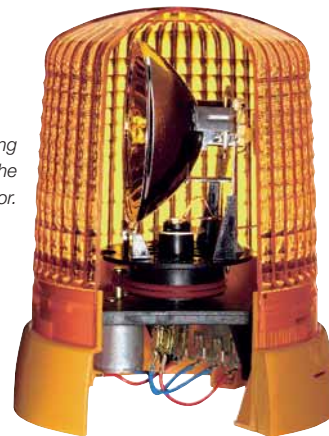
- Bulbs and reflectors form a rotating unit – the full light output of the Halogen bulbs is used.
- Optimum light beam and distribution – high range and maximum warning effectiveness.
- Reflector system and robust bulb socket for simple, fast light-source replacement – no contamination or misalignment of the reflector.
- Economic product solution – Low maintenance costs, e.g. when replacing the light source.

Revolving Lamps

Hella's revolving lamps are fitted with a corrosion resistant plastic housing, which is lightweight and insulated. Noise is effectively reduced by utilising silver contacts and dual drive belts, ensuring the lamp remains fully operational even if one of the belts should fail and will increase the lamp's service life.

Revolving lamps feature a safe and robust bulb holder, allowing bulbs to be replaced from the rear, preventing damage to the reflector. In addition, Hella's revolving lamps incorporate radio frequency (RF) suppression which reduces the interference with two-way/CB radios.

A cut away image showing the construction of the beacon and reflector.





LED Multivolt	95903701	<i>DuraLed® Multi-flash Signal Lamp - Red</i>
LED Multivolt	95903711	<i>DuraLed® Multi-flash Signal Lamp - Amber</i>
LED Multivolt	95903761	<i>DuraLed® Multi-flash Signal Lamp - Blue</i>
LED Multivolt	95903781	<i>DuraLed® Multi-flash Signal Lamp - Green</i>
LED Multivolt	95903791	<i>DuraLed® Multi-flash Signal Lamp - White</i>

DESCRIPTION Multi-purpose signal lamps for emergency vehicles. This range of warning lamps has 10 programmable flash modes and can be synchronised to flash alternately or in unison.

MOUNTING Two hole surface mount, mounting bushes supplied.

VOLTAGE Multivolt™ for optimum brightness at input voltages from 9 to 33 volts.

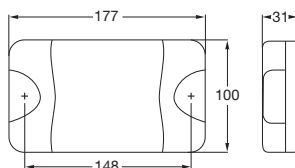
POWER

CONSUMPTION 9W continuous (less in flashing modes)

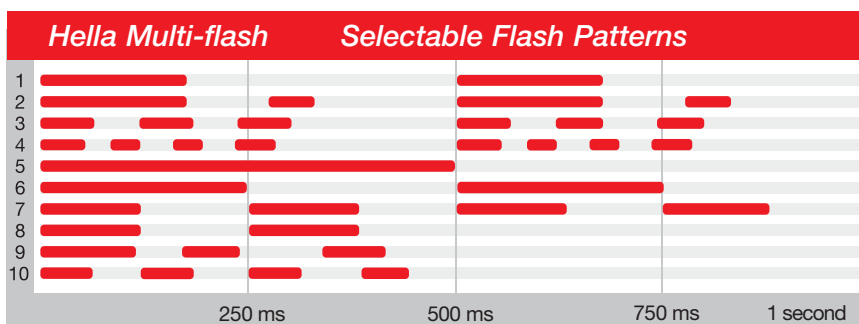
PROTECTION Reverse polarity and 5000 watt Transient Voltage Suppressor (TVS).
IP 6K6 (Protection against dust and high pressure water jets)
IP 6K7 (Protection against temporary water immersion)

CABLE LENGTH Pre-wired with 2.5m of cable.

COMPLIANCE 03 1925 Red, Amber SAE J845 Class 1



EMERGENCY



Note Multi-flash lamps can also function continuously on.

95901140	LED 83mm Round Multi-flash Signal Lamp - Red
95901145	LED 83mm Round Multi-flash Signal Lamp - Amber
95901160	LED 83mm Round Multi-flash Signal Lamp - Blue
95901165	LED 83mm Round Multi-flash Signal Lamp - Green

LED Multivolt
LED Multivolt
LED Multivolt
LED Multivolt



DESCRIPTION Multi-purpose 83mm diameter round LED signal lamp with single bolt mount for emergency vehicles. This range of warning lamps has 10 programmable flash modes and can be synchronised to flash alternately or in unison.

MOUNTING Single bolt 1/4" stainless UNC thread. Nut and washer supplied.

VOLTAGE Multivolt™ for optimum brightness at input voltages from 9 to 33 volts.

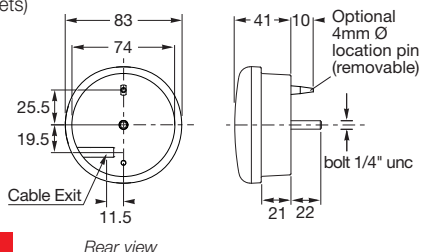
POWER CONSUMPTION 6W continuous (less in flashing modes)

PROTECTION Reverse polarity and voltage spike protection.
IP 6K6 (Protection against dust and high pressure water jets)
IP 6K7 (Protection against temporary water immersion)

CABLE LENGTH Pre-wired with 2.5m of cable.

COMPLIANCE 03 1681

Note For specific performance approvals please contact Hella.



Operating Modes

Hella multi-flash lamps have a variety of flashing options.

Steady state:	Lamp operates as a continuous ON signal
Independent flash:	Lamp operates from an external flashing system
Flash state:	Lamp operates in the flash mode pre-selected by the user
Blitz state:	Lamp operates in a burst of quad flashes (pattern 4)

Note: The blitz mode overrides the other operating modes, and is triggered by switching the blue cable to negative (-).

98091100	LED 360° Multi-flash Signal Lamp - White
98091120	LED 360° Multi-flash Signal Lamp - Green
98091140	LED 360° Multi-flash Signal Lamp - Red
98091160	LED 360° Multi-flash Signal Lamp - Amber
98091170	LED 360° Multi-flash Signal Lamp - Blue

LED Multivolt
LED Multivolt
LED Multivolt
LED Multivolt
LED Multivolt



DESCRIPTION Multi-purpose LED 360° multi-flash signal lamps with Grilamid® lens are available in four signal colours and white. This range of warning lamps has 10 programmable flash modes and can be synchronised to flash alternately or in unison.

MOUNTING Upright mounting with three point mount.

VOLTAGE Multivolt™ for optimum brightness at input voltages from 9 to 33 volts.

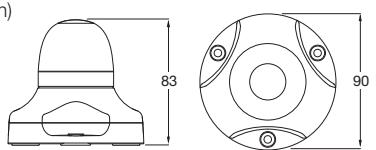
POWER CONSUMPTION Less than 5W (less in flashing modes)

PROTECTION Reverse polarity and voltage spike protection.
IP 67 (Protection against dust and temporary water immersion)

CABLE LENGTH Pre-wired with 2.5m of cable.

COMPLIANCE 03 1679

LENS MATERIAL Grilamid®



EMERGENCY



Signal Warning Lamp

- LED 95902081** LED Signal Warning Lamp, Red - 24 Volt
- LED 95902181** LED Signal Warning Lamp, Amber - 24 Volt

DESCRIPTION Low profile signal warning LED lamp featuring Ultra Wide Visibility Optics for significantly improved side visibility.

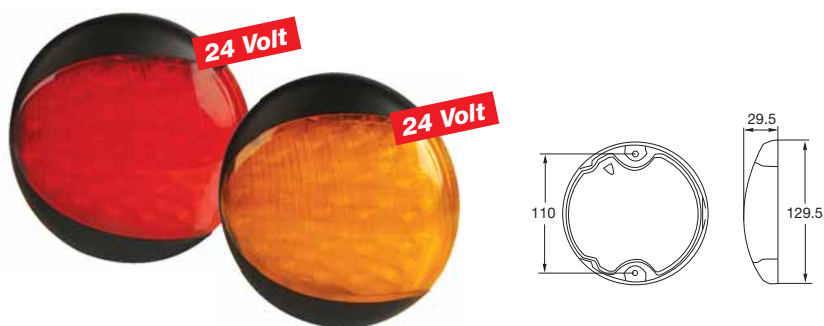
MOUNTING Two hole surface mount, mounting bushes supplied.

VOLTAGE 20-28V

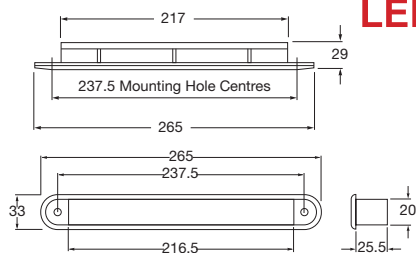
POWER CONSUMPTION 5W

PROTECTION Reverse polarity and Transient Spike Circuit protection.
IP 6K6 (Protection against dust and high pressure water jets)
IP 6K7 (Protection against dust and temporary water immersion)

CABLE LENGTH Pre-wired with 2.5m of cable.



EMERGENCY



- LED 95907360** LED Wide Rim Strip, Blue - 12 Volt
- LED 95907365** LED Wide Rim Strip, Blue - 24 Volt
- LED 95907370** LED Wide Rim Strip, Red - 12 Volt
- LED 95907375** LED Wide Rim Strip, Red - 24 Volt

DESCRIPTION Covert wide rim strip LED signal warning lamps available in red and blue colour variants. Optic appears clear until illuminated.

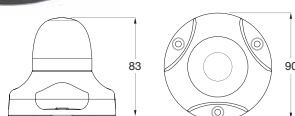
MOUNTING May be mounted vertically or horizontally. Two hole recess mount.

POWER CONSUMPTION 2W

PROTECTION Reverse polarity protected.

CABLE LENGTH Pre-wired with 2.5m of cable.

Note Includes gasket, screws and screw caps.



- LED Multivolt 98091004** LED 360° Warning Lamp - White
- LED Multivolt 98091024** LED 360° Warning Lamp - Green
- LED Multivolt 98091044** LED 360° Warning Lamp - Red
- LED Multivolt 98091064** LED 360° Warning Lamp - Amber
- LED Multivolt 98091074** LED 360° Warning Lamp - Blue

DESCRIPTION Multi-purpose LED 360° warning lamps with Grilamid® lens are available in four signal colours and white. Optics appear clear until illuminated.

MOUNTING Upright mounting with three point mount.

VOLTAGE Multivolt™ for optimum brightness at input voltages from 9 to 33 volts.

POWER CONSUMPTION 2W

PROTECTION Reverse polarity and voltage spike protection.
IP 67 (Protection against dust and temporary water immersion)

CABLE LENGTH Pre-wired with 2.5m of cable.

COMPLIANCE EN 6031679

Note: See page 125 for Multi-flash versions.

NEW ENTRY

95913610 LED Dash Mount Signal Lamp, Amber - 12 Volt

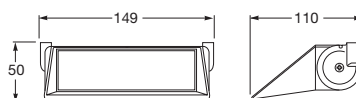
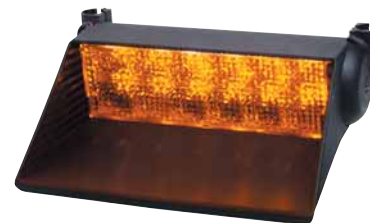
LED

DESCRIPTION Inconspicuous LED warning signal lamp. Its unobtrusive and aesthetic design allows for permanent fitment, making it the ideal alternative to revolving or strobe lamps attached to the vehicle roof. Optic appears clear until illuminated in amber signal colour.

MOUNTING Dash mount.

POWER CONSUMPTION 3W

CABLE LENGTH Pre-wired with 2.5m of cable.



NEW ENTRY

329000A LED Viper™ S2 Signal Lamp, Amber - 12 Volt

LED

329000R LED Viper™ S2 Signal Lamp, Red - 12 Volt

LED

DESCRIPTION Viper™ S2 advances auxiliary internal warning to a higher plateau with superior light output, easy-to-select flash patterns, and simple pattern synchronization. The superior warning capability of Solaris™ reflector technology provides a bold array of light and impressive off-axis reflection. Phenomenal light output, versatile mounting options and simplistic product functionality make the Viper™ S2 product stand out in the warning light industry.

MOUNTING Mounting bracket or suction caps.

POWER CONSUMPTION 19W

CABLE LENGTH Pre-wired with 2.7m of cable with switchable power plug.



NEW ENTRY

329000AA LED Viper™ S2 Signal Lamp, Amber - 12 Volt

LED

329000RR LED Viper™ S2 Signal Lamp, Red - 12 Volt

LED

DESCRIPTION Viper™ S2 advances auxiliary internal warning to a higher plateau with superior light output, easy-to-select flash patterns, and simple pattern synchronization. The superior warning capability of Solaris™ reflector technology provides a bold array of light and impressive off-axis reflection. Phenomenal light output, versatile mounting options and simplistic product functionality make the Viper™ S2 product stand out in the warning light industry.

MOUNTING Mounting bracket or suction caps.

POWER CONSUMPTION 19W

CABLE LENGTH Pre-wired with 2.7m of cable with switchable power plug.



EMERGENCY



Push button pattern selection makes selecting one of over 20 flash patterns simple.



Snap on guards attach or detach without requiring the use of hand tools and provide flash protection inside the vehicle.



The power Plug option allows for instant installation and features an on/off switch for fast activation.

LED
For Ultra Low Power Consumption



LED
Multivolt

212660A

LED Pulsator™ Beacon - Amber

DESCRIPTION

Amber LED beacon which combines a powerful, solid-state light source and encapsulated digital circuitry with advanced dome optics to produce a bold, high-intensity flash. The impact resistant, polycarbonate base and potted construction provide superior performance in extreme shock and vibration.

MOUNTING

Horizontal three point mount.

VOLTAGE

12-24V

CURRENT DRAW

0.80 - pulsed (0.35 average) at 12.8V
0.40 - pulsed (0.17 average) at 25.6V

POWER CONSUMPTION

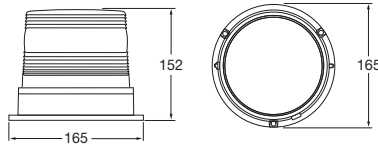
5W max average

FLASH RATE

10 selectable flash patterns.

COMPLIANCE

SAE J845 Class 1



LED
Multivolt

252650A

LED UltraStar™ Beacon - Amber

LED
Multivolt

252654R

LED UltraStar™ Beacon - Red

DESCRIPTION

LED beacon with 10 selectable flash patterns. Impervious to moisture, extreme shock and high vibration.

MOUNTING

Horizontal three point mount.

VOLTAGE

12-24V

CURRENT DRAW

1.2 - pulsed (0.6 average) at 12.8V
0.6 - pulsed (0.3 average) at 25.6V

POWER CONSUMPTION

10W max average

FLASH RATE

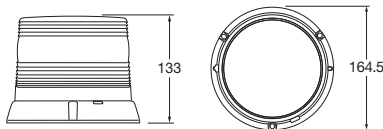
10 selectable flash patterns.

CABLE LENGTH

Pre-wired with 200mm of cable.

COMPLIANCE

SAE J845 Class 1



EMERGENCY

Flash Patterns



NEW
ENTRY

27091001

LED UltraRay® Warning Beacon - Amber

LED
Multivolt

DESCRIPTION

UltraRAY® LED beacons offer multiple, user-selectable flash patterns suit a large variety of applications. Additional user selectable features include a battery saver mode to alert users if the equipment power supply drops below normal operating voltage levels to conserve power, as well as a daylight sensing that can automatically adjust the intensity of the beacon to ambient light levels.

A reverse gear circuit allows the flash pattern to be changed to alert staff of the travel direction of the equipment. The desired operational mode can be selected by simply changing the DIP switch settings on the circuit board. UltraRAY® beacons are extremely robust, tolerant to severe vibration levels and very compact in design.

Each beacon is equipped with a high impact and shock resistant, amber polycarbonate lens bolted to a heavy-duty cast alloy base, sealed by a neoprene O-ring against dust and water ingress. UltraRAY® LED beacons are maintenance free and extremely power efficient, which greatly reduces both operating temperature and demand on the vehicle's electrical system..



MOUNTING

Direct mount.

VOLTAGE

12-30V

POWER CONSUMPTION

20W max

CABLE LENGTH

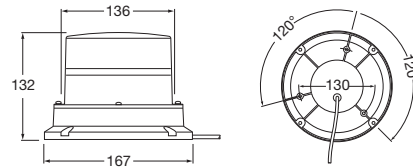
Pre-wired with two metres of cable.

PROTECTION

IP 6K5 (Protection against dust and powerful water jets at increased pressure)

COMPLIANCE

SAE J845 Class 1



27091071

LED UltraRAY® R Warning Beacon - Amber

LED
Multivolt

DESCRIPTION

UltraRAY® R LED beacons feature user selectable 'rotating' or quad flash patterns. They are extremely robust, tolerant to severe vibration levels and very compact in design. Equipped with a high impact and shock resistant, polycarbonate lens bolted to a heavy-duty cast alloy base and sealed by a neoprene O-ring against dust and water ingress.

UltraRAY® R LED warning beacons are maintenance free with no moving parts or fragile globes. All UltraRAY® R LED beacons are highly energy efficient delivering up to 70% energy saving over conventional beacons, which greatly reduces both operating temperature and demand on the vehicle's electrical system.



NEW
ENTRY

EMERGENCY

MOUNTING

Direct mount

VOLTAGE

12-30V

POWER CONSUMPTION

20W max

CABLE LENGTH

Pre-wired with two metres of cable.

PROTECTION

IP 6K5 (Protection against dust and powerful water jets at increased pressure)

COMPLIANCE

SAE J845 Class 1



454201A



454201AMAG



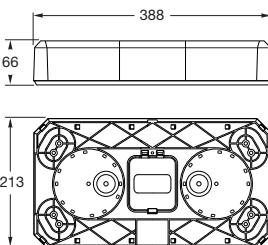
454201R



454201B



454218



LED Highlighter™ - Light Bars

LED	454201A	LED Highlighter™ Mini Light Bar, Amber - 12 Volt
LED	454201A-24V	LED Highlighter™ Mini Light Bar, Amber - 24 Volt
LED	454201AMAG	LED Highlighter™ Mini Light Bar Magnetic base, Amber - 12 Volt
LED	454201R	LED Highlighter™ Mini Light Bar, Red - 12 Volt
LED	454201R-24V	LED Highlighter™ Mini Light Bar, Red - 24 Volt
LED	454201B	LED Highlighter™ Mini Light Bar, Blue - 12 Volt

DESCRIPTION The Highlighter™ LED combines the high performance ROC™ (Reliable On-board Circuitry) with the high efficiency Solaris reflector design. The innovative reflector design offers uniform 360-degree light distribution, which means no dark spots or shadows. Light bars come complete with P/N 454218 mount.

FLASH RATE 20 selectable flash patterns.
CURRENT DRAW 12V-5.0A max/24V-3.0A max

SPARE PARTS 454217 Mount riser 52mm
 454218 Mount flat 12mm

COMPLIANCE SAE J845 Class 1

Note Hella does not recommend the magnetic base version for use on a moving vehicle. (See page 140)



LED Highlighter™ - Light Bars

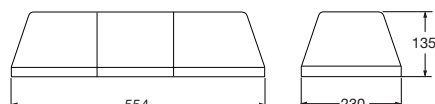
56 cm (22") Light Bar

7415111	Turbo Beam, Amber - 12 Volt	12V Bulb Incl.
7211908	Turbo Beam, Amber - 24 Volt	24V Bulb Incl.
7211702	Turbo Beam, Red - 12 Volt	12V Bulb Incl.
7211908-R	Turbo Beam, Red - 24 Volt	24V Bulb Incl.
7415111-P	Turbo Beam, Purple - 12 Volt	12V Bulb Incl.



7211702

Note Refer to description and spare parts below.



38 cm (15") Light Bar

7415010	Turbo Beam, Amber - 12 Volt	12V Bulb Incl.
7211900	Turbo Beam, Amber - 24 Volt	24V Bulb Incl.
7211700	Turbo Beam, Red - 12 Volt	12V Bulb Incl.
7211900-R	Turbo Beam, Red - 24 Volt	24V Bulb Incl.
7415010-P	Turbo Beam, Purple - 12 Volt	12V Bulb Incl.



7415010



7415010-P

DESCRIPTION Turbo beams are built from very highly reliable components to maximise their effectiveness in extreme conditions. They also feature impact-resistant polycarbonate domes and aluminium alloy extrusions to increase service life. In addition, the Turbo beams powerful rotators contain parabolic reflectors, providing exceptional performance and reliability.

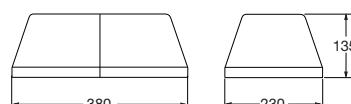
FLASH RATE 190 flashes per minute.

BULBS TO SUIT
12V C1255 x 2
24V C2470 x 2

SPARE PARTS

7210897	Magnetic mount kit
7210989	Lens Retainer/plug kit
7411010	Motor, gear, reflector assembly 12V
Z8559A002B	Worm gear - replacement
7439234	Motor, gear, reflector assembly 24V
7411187	● Amber lens (Left Hand)
7411177	● Amber lens (Centre)
7411167	● Amber lens (Right Hand)
7411189	● Red lens (Left Hand)
7411179	● Red lens (Centre)
7411169	● Red lens (Right Hand)
7411186	● Blue lens (Left Hand)
7411176	● Blue lens (Centre)
7411166	● Blue lens (Right Hand)
7411183	● Purple lens (Left Hand)
7411173	● Purple lens (Centre)
7411163	● Purple lens (Right Hand)

COMPLIANCE SAE J845 Class 1



EMERGENCY



12V Bulb Incl.

2RL 009 688 001

Light Bar 1100mm, Amber - 12 Volt

DESCRIPTION	Amber light bar with an attractive modern design in silver with a white central panel.
FLASH RATE	160 flashes per minute.
VOLTAGE	12V
PROTECTION	IP 5K4K (Protected against dust and water splashing with increased pressure) IP 9K (Protected against high-pressure/steam jet cleaning)
BULB TO SUIT	C1255 x 2
COMPLIANCE	Ⓔ1 1719 Ⓔ4 03 1140

6 Pod Viewpoint

12V Bulb Incl.

FV2252

6 Pod Light Bar, Amber - 12 Volt

24V Bulb Incl.

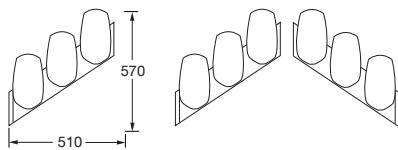
FV2252-024

6 Pod Light Bar, Amber - 24 Volt

24V Bulb Incl.

FV2258Y-24V

6 Pod Light Bar, Red/White/Red - 24 Volt



DESCRIPTION	A flexible split system able to be placed at any point on a vehicle roof.	
CURRENT DRAW	12V 29A	
	24V 18A	
POWER CONSUMPTION	12V - 340W 24V - 440W	
FLASH RATE	Two Pods at 95FPM. Four Pods at 175FPM.	
BULBS TO SUIT	12V C1255	
	24V C2470	
SPARE PARTS	8572001A ● Clear lens	
	8572001A-01 ● Red lens	
	8572001A-02 ● Amber lens	
	8572001A-03 ● Blue lens	
	8572001A-07 ● Purple lens (Heavy Haulage)	
COMPLIANCE	SAE J845 Class 1	

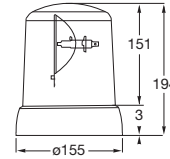
EMERGENCY



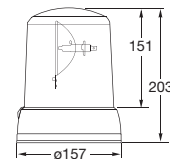
1728	Revolving Beacon, Amber - 12 Volt	12V Bulb Incl.
1728-24V	Revolving Beacon, Amber - 24 Volt	24V Bulb Incl.
1729	Revolving Beacon Magnetic Mount, Amber - 12/24 Volt	Both Bulbs Incl.
1735	Revolving Beacon Flexibase Mount, Amber - 12/24 Volt	Both Bulbs Incl.
1727	Revolving Beacon, Red - 12 Volt	12V Bulb Incl.
1727-24V	Revolving Beacon, Red - 24 Volt	24V Bulb Incl.
1726	Revolving Beacon, Blue - 12 Volt	12V Bulb Incl.
1726-24V	Revolving Beacon, Blue - 24 Volt	24V Bulb Incl.



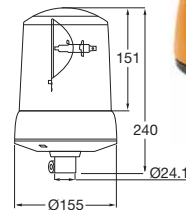
1728



1729



1735



DESCRIPTION KL 7000 High performance revolving beacon with light values well above the minimum requirements. All KL 7000 beacons can be operated on 12 or 24V by changing the bulb. The bulb is replaced from the rear of the reflector eliminating the need to touch the highly polished reflector surface. A twin belt drive ensures a smooth and quiet operation.

CURRENT DRAW 12V 5.5A
24V 3.5A

POWER CONSUMPTION 12V - 55W
24V - 70W

ROTATION 160rpm

RF SUPPRESSION Conducted Class 5 (CISPR25).

PROTECTION IP 5K4K (Protected against dust and water splashing with increased pressure)
IP 9K (Protected against high-pressure/steam jet cleaning)

BULBS TO SUIT 12V C1255
24V C2470

SPARE PARTS

9.1726.01	● Blue lens
9.1727.01	● Red lens
9.1728.01	● Amber lens
9.1737.91	Two drive belts
9.1726.23	Reflector assembly
9.1726.52	12/24V Motor assembly
8007	Connecting piece
8008	Connecting piece - threaded
8007FM	Connecting piece - flat mount
8007RA	Connecting piece - right angle mount

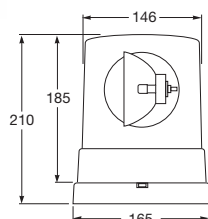
COMPLIANCE (E) 1241 e1 03 1740

*Note Hella does not recommend the magnetic base version for use on a moving vehicle. (See page 140)
See page 141 for spare part images.*





1724



1653

KL 700

1720

Revolving Beacon, Blue - 24 Volt

1721

Revolving Beacon, Red - 24 Volt

1722

Revolving Beacon, Amber - 24 Volt

1724

Revolving Beacon, Amber - 12 Volt

DESCRIPTION High performance revolving beacon. The bulb is replaced from the rear of the reflector eliminating the need to touch the highly polished reflector surface. Twin belt drive ensures a smooth and quiet operation.

POWER CONSUMPTION 12V - 55W
24V - 70W

ROTATION 160rpm

RF SUPPRESSION VDE 0879, Class 3, FM 5.

BULBS TO SUIT 12V C1255
24V C2470

PROTECTION IP 5K4K (Protected against dust and water splashing with increased pressure)
IP 9K (Protected against high-pressure/steam jet cleaning)

SPARE PARTS

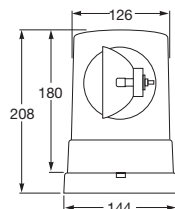
1653	Magnetic Mounting Kit
9.1717.01	● Blue lens
9.1718.01	● Red lens
9.1719.01	● Amber lens (no optic lens)
9.1724.01	● Amber lens
9.1723.01	● Green lens
9.1725.02	● Purple lens (Heavy Haulage)
9.1717.54	12V motor
9.1720.54	24V motor
9.1737.91	Two drive belts
9.1717.23	Reflector base assembly
9.1717.05	Base gasket

COMPLIANCE 88072

Note Hella does not recommend the magnetic base version for use on a moving vehicle (see page 140).
See page 141 for spare part images.



1702



KL 710

1702

Revolving Beacon, Amber - 12 Volt

1705

Revolving Beacon, Amber - 24 Volt

DESCRIPTION High performance revolving beacon. The bulb is replaced from the rear of the reflector eliminating the need to touch the highly polished reflector surface. Twin belt drive ensures a smooth and quiet operation.

POWER CONSUMPTION 12V - 55W
24V - 70W

ROTATION 160 +/- 30rpm

RF SUPPRESSION VDE 0879, Class 3, FM 5.

BULBS TO SUIT 12V C1255
24V C2470

PROTECTION IP 5K4K (Protected against dust and water splashing with increased pressure)
IP 9K (Protected against high-pressure/steam jet cleaning)

SPARE PARTS

9.1709.01	● Red lens
9.1708.01	● Blue lens
9.1713.01	● Amber lens
9.1717.54	12V motor
9.1720.54	24V motor
9.1737.91	Two drive belts
9.1717.23	Reflector base assembly

COMPLIANCE 6506 03 2183

Note See page 141 for spare part images.

71722 *Revolving Beacon, Amber - 24 Volt*

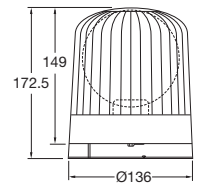
71723 *Revolving Beacon, Amber - 12/24 Volt*

71724 *Revolving Beacon, Amber - 12 Volt*

24V Bulb Incl.

12V Bulb Incl.

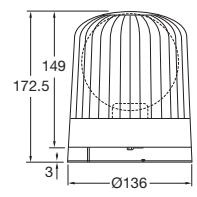
DESCRIPTION Economy revolving beacon with gear drive and fixed bulb.
MOUNTING Horizontal mount only. Three point mount.
POWER CONSUMPTION 12V - 55W
 24V - 70W
BULBS TO SUIT 12V C1255
 24V C2470
PROTECTION IP 5K4K (Protected against dust and water splashing with increased pressure)
 IP 9K (Protected against high-pressure/steam jet cleaning)
SPARE PART 9.71722.01 ● Amber lens
COMPLIANCE (E) 6514 (E) 03 2182



71725 *Revolving Beacon Magnetic Mount, Amber - 12/24 Volt*

DESCRIPTION Revolving beacon complete with magnetic base for quick and secure attachment to vehicle roof. Features a spiral cable and power socket.
ROTATION 160rpm
BULBS TO SUIT 12V C1255
 24V C2470
PROTECTION IP 5K4K (Protected against dust and water splashing with increased pressure)
 IP 9K (Protected against high-pressure/steam jet cleaning)
SPARE PART 9.71722.01 ● Amber lens
COMPLIANCE (E) 6514 (E) 03 2182

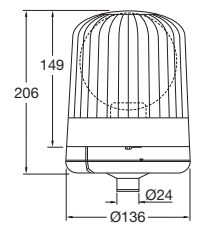
Note Hella does not recommend the magnetic base version for use on a moving vehicle. (See page 140)



71726 *Revolving Beacon Flexible Pipe Mount, Amber - 12/24 Volt*

DESCRIPTION Revolving beacon with flexible housing base with a spring action allowing beacon to bend on impact. The polycarbonate lens is particularly resistant to impact damage. The base incorporates a spigot tube mount.
ROTATION 160rpm
BULBS TO SUIT 12V C1255
 24V C2470
PROTECTION IP 5K4K (Protected against dust and water splashing with increased pressure)
 IP 9K (Protected against high-pressure/steam jet cleaning)
SPARE PARTS 9.71722.01 ● Amber lens
 8007 Connecting piece
 8008 Connecting piece - threaded
 8007FM Connecting piece - flat mount
 8007RA Connecting piece - right angle mount
COMPLIANCE (E) 6514 (E) 03 2182

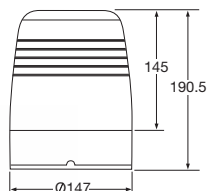
Note Must be used in conjunction with connecting piece part numbers 8007, 8007FM, 8007RA or 8008. To be ordered separately.



EMERGENCY



1797



1797-MAG

KL Junior Plus

1797

Revolving Beacon, Amber - 12 Volt

1797-24V

Revolving Beacon, Amber - 24 Volt

1797-MAG

Revolving Beacon Magnetic Mount, Amber - 12/24 Volt

DESCRIPTION The latest generation KL Junior Plus revolving beacon offers a belt drive, which enhances reliability, bulb life and lowers noise output. Light output has been improved with the bulb being located in the reflector.

POWER CONSUMPTION
12V - 55W
24V - 70W

ROTATION 180rpm

RF SUPPRESSION Conducted Class 3 (SISPR 25).

BULBS TO SUIT
12V C1255
24V C2470

PROTECTION IP 5K4K (Protected against dust and water splashing with increased pressure)
IP 9K (Protected against high-pressure/steam jet cleaning)

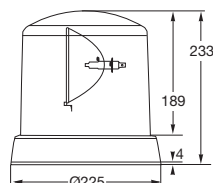
SPARE PARTS
9.1797.01 ● Amber acrylic lens
9.1797.91 Drive belt

COMPLIANCE (E) 1419 (E) 03 3954

Note Hella does not recommend the magnetic base version for use on a moving vehicle. (See page 140)
See page 141 for spare part images.



1796



KL 8000

1794

Revolving Beacon, Blue - 12/24 Volt

1795

Revolving Beacon, Red - 12/24 Volt

1796

Revolving Beacon, Amber - 12/24 Volt

DESCRIPTION KL8000 revolving beacon developed for large and heavy commercial vehicles. Particularly high light values guarantee utmost warning effectiveness and safety. Maximum smooth running thanks to the maintenance-free drive bearings and twin-belt technology.

POWER CONSUMPTION
12V - 55W
24V - 70W

ROTATION 160rpm

RF SUPPRESSION Conducted Class 5 (SISPR 25).

BULBS TO SUIT
12V C1255
24V C2470

PROTECTION IP 5K4K (Protected against dust and water splashing with increased pressure)
IP 9K (Protected against high-pressure/steam jet cleaning)

SPARE PARTS
9.1794.01 ● Blue lens
9.1795.01 ● Red lens
9.1796.01 ● Amber lens
9.1737.91 Two drive belts
9.1794.23 Reflector assembly
9.1726.52 12/24V Motor assembly

COMPLIANCE (E) 1243 (E) 03 1740

Note See page 141 for spare part images.

Rotoflex

1730	<i>Revolving Beacon, Amber - 12 Volt</i>	12V Bulb Incl.
1731	<i>Revolving Beacon, Amber - 24 Volt</i>	24V Bulb Incl.

DESCRIPTION Rotoflex revolving beacon with polycarbonate lens and flexible rubber base.

MOUNTING Tubular base incorporates connection plug.
Must be used in conjunction with connecting piece P/N 8007, 8007FM 8007RA or 8008.

POWER CONSUMPTION 12V - 55W
24V - 70W

ROTATION 160rpm

RF SUPPRESSION Conducted Class 5 (SISPR 25).

BULBS TO SUIT 12V C1255
24V C2470

PROTECTION IP 5K4K (Protected against dust and water splashing with increased pressure)
IP 9K (Protected against high-pressure/steam jet cleaning)

SPARE PARTS

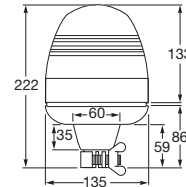
9.1730.01	● Amber polycarbonate lens
9.1732.52	12V Motor
9.1732.54	24V Motor
9.1730.23	Reflector for Rotoflex
8007	Connecting piece
8008	Connecting piece - threaded
8007FM	Connecting piece - flat mount
8007RA	Connecting piece - right angle mount

COMPLIANCE (E) 6509 (E) 03 2181

Note See page 141 for spare part images.

12V Bulb Incl.

24V Bulb Incl.



Rotofix

1732	<i>Revolving Beacon, Amber - 12 Volt</i>	12V Bulb Incl.
1732-24V	<i>Revolving Beacon, Amber - 24 Volt</i>	24V Bulb Incl.
1733	<i>Revolving Beacon Magnetic Mount, Amber - 12 Volt</i>	12V Bulb Incl.
1733-24V	<i>Revolving Beacon Magnetic Mount, Amber - 24 Volt</i>	24V Bulb Incl.

DESCRIPTION Rotoflex revolving beacon polycarbonate lens and rubber base.

MOUNTING Fixed base or with magnetic attachment.

POWER CONSUMPTION 12V - 55W
24V - 70W

ROTATION 160 +/- 30rpm

RF SUPPRESSION Conducted Class 5 (SISPR 25).

BULBS TO SUIT 12V C1255
24V C2470

PROTECTION IP 5K4K (Protected against dust and water splashing with increased pressure)
IP 9K (Protected against high-pressure/steam jet cleaning)

SPARE PARTS

9.1730.01	● Amber polycarbonate lens
9.1732.52	12V Motor
9.1732.54	24V Motor
9.1732.23	Reflector for Rotofix

COMPLIANCE (E) 6509 (E) 03 2181

Note Hella does not recommend the magnetic base version for use on a moving vehicle. (See page 140)
See page 141 for spare part images.

12V Bulb Incl.

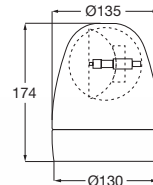
24V Bulb Incl.

12V Bulb Incl.

24V Bulb Incl.



1732

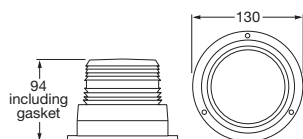


1733

EMERGENCY



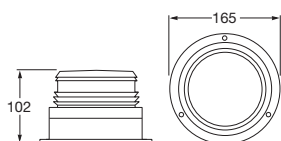
1657



8027 (extendable to two metres).



1645



8028 (extendable to two metres)

Firebolt Plus

1655	Strobe Beacon, Blue - 12-72 Volts
1656	Strobe Beacon, Red - 12-72 Volts
1657	Strobe Beacon, Amber - 12-72 Volts
1663	Strobe Beacon, Green - 12-72 Volts

DESCRIPTION The Firebolt Plus strobe features a 2 joule power supply that works from 12 to 72V. Modular construction incorporates a powerful replaceable strobe tube and vibration resistant circuit board. The unit also features a tough impact-resistant polycarbonate lens and base. Applications include fork-lift, electric vehicles, industrial trucks and equipment. Supplied with enclosed base and all necessary mounting hardware (mounts with three bolts).

VOLTAGE	12-72V.
CURRENT DRAW	0.24 - 0.04A
POWER	3 Watts, 2 Joules
FLASH RATE	60 +/- 10 per minute
PROTECTION	IP 55 (Protected against dust and water jets)
BULB TO SUIT	XN000 Strobe tube (see page 139)
SPARE PARTS	8027 Magnetic Mounting Kit
	9.1655.01 ● Blue lens
	9.1656.01 ● Red lens
	9.1657.01 ● Amber lens
	9.1655.03 Multi-voltage power supply, 12-72V

Note Hella does not recommend the magnetic base version for use on a moving vehicle. (See page 140)

Pulsator 451

1643	Strobe Beacon, Blue - 12-48 Volts
1644	Strobe Beacon, Red - 12-48 Volts
1645	Strobe Beacon, Amber - 12-48 Volts

DESCRIPTION The Pulsator 451 low-profile, 12 to 48V strobe is ideal for applications that require shock-resistant mounting, water-resistant performance and easy maintenance. The patented base design (U.S. Patent #4745530) and O-ring seal allow you to service the replaceable modular strobe tube and power supply without removing the strobe from its mount. The unit is reverse polarity protected with an isolated earth that enables both negative and positive ground installations.

VOLTAGE	12-48V
CURRENT DRAW	0.9 - 0.25A
POWER	11 Watts, 8 Joules
FLASH RATE	80 +/- 10 per minute, double flash.
PROTECTION	IP 55 (Protected against dust and water jets)
BULB TO SUIT	XN451 Strobe tube (see page 139)
SPARE PARTS	8028 Magnetic Mounting Kit
	9.1643.01 ● Blue lens
	9.1644.01 ● Red lens
	9.1645.01 ● Amber lens
	9.1643.03 Multi-voltage power supply, 12-48V
COMPLIANCE	SAE J1318 Class 2

Note Hella does not recommend the magnetic base version for use on a moving vehicle. (See page 140)

Remote Strobe

8ES 009 096-001 Strobe Power Supply Two head - 10-30 Volts

8ES 009 096-011 Strobe Power Supply Four head - 10-30 Volts

DESCRIPTION Regulated power supply for use with compact Xenon flash coils. Designed for alternating flash sequences. Can be programmed for double or quad flash. For use with the flash coils below. Wiring and connectors supplied.

PROTECTION Reverse polarity protected.
IP 5K4K (Protected against dust and water splashing with increased pressure)
IP 9K (Protected against high-pressure/steam jet cleaning)

COMPLIANCE 23606



8GS 863 467-001 Xenon Compact Flash Coil - Amber

8GS 863 467-011 Xenon Compact Flash Coil - Blue

8GS 863 467-021 Xenon Compact Flash Coil - Red

8GS 863 467-031 Xenon Compact Flash Coil - Clear

DESCRIPTION These extremely intense warning lamps are used in emergency warning vehicles. The Xenon compact flash coils can be used for installation in existing headlamp or tail lamp assemblies. Requires remote power supply as shown above.

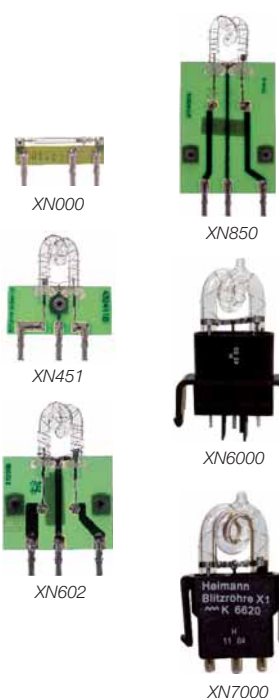


EMERGENCY

Strobe Tubes

Part No.	Voltage	Joule	Base	To Suit
XN000	12-72V	2	Circuit Board	Firebolt
XN451	12-48V	8	Circuit Board	Pulsator 451
XN602	12-48V	12	Circuit Board	Model 602
XN850	12-48V	12	Circuit Board	Model 851
XN6000	12-24V	10	Plastic	KLX Junior
XN7000	12-24V	12	Plastic	KLX 7000

Note Strobe lamps are rated in Joules. 1 Joule = 1 watt/second.





12V Bulb Incl.

1688

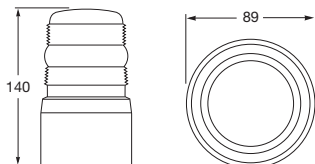
Flashing Beacon, Red - 12 Volt

12V Bulb Incl.

1689

Flashing Beacon, Amber - 12 Volt

DESCRIPTION	Fresnel lens. Flasher unit 3008 included.	
MOUNTING	Three holes for fixing screws.	
BULB TO SUIT	12V	U1245
SPARE PARTS	1.6502.012	● Red lens
	1.6502.01	● Amber lens
	1.6502.013	● Green lens
	1.6502.014	● Blue lens
	3008	12V Flasher unit



12V Bulb Incl.

1690

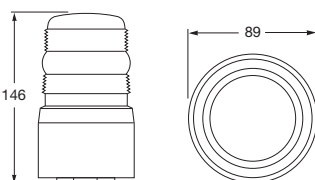
Flashing Beacon Magnetic Mount, Red - 12 Volt

12V Bulb Incl.

1691

Flashing Beacon Magnetic Mount, Amber - 12 Volt

DESCRIPTION	Fresnel lens. Flasher unit 3008, 3m cable, lighter plug.	
MOUNTING	Magnetic base.	
BULB TO SUIT	12V	U1245
SPARE PARTS	1.6502.012	● Red lens
	1.6502.01	● Amber lens
	1.6502.013	● Green lens
	1.6502.014	● Blue lens
	3008	12V Flasher unit



Note Hella does not recommend the magnetic base version for use on a moving vehicle. (See below)



12V Bulb Incl.

1692

Beacon, Red - 12 Volt

12V Bulb Incl.

1694

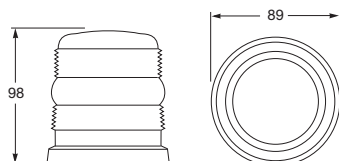
Beacon, Blue - 12 Volt

12V Bulb Incl.

1696

Beacon, Amber - 12 Volt

DESCRIPTION	Fresnel lens. Flasher unit not included.	
MOUNTING	Three holes for fixing screws.	
VOLTAGE	12V	
FLASHERS	12V	P/N 3008 or 3014
	24V	P/N 3015 (to be ordered separately)
BULBS TO SUIT	12V	U1245
	24V	U2445
SPARE PARTS	1.6502.012	● Red lens
	1.6502.014	● Blue lens
	1.6502.01	● Amber lens
	1.6502.013	● Green lens



Caution: Mounting of Magnetic Base Revolving Lamps

Due to Hella being unable to control the condition of the mounting surface or the potential forces that may occur during deceleration, fitment of warning lamps with a magnetic base cannot be recommended for use on moving vehicles.

KL 7000



9.1726.23



9.1726.52



9.1737.91

KL 700

KL 710



Screw mount
9.1717.23



Clip mount
12V - 9.1717.52
24V - 9.1720.52



9.1717.05



12V - 9.1717.54
24V - 9.1720.54



9.1737.91



1653

KL Junior Plus



9.1797.91

KL 8000



9.1794.23



9.1726.52



9.1737.91

Rotofix

Rotoflex



9.1730.23



9.1732.23



12V - 9.1732.52
24V - 9.1732.54

Pole Mounts



8007



8008



8007FM



8007RA