



4901

7 Pole Plastic Socket

DESCRIPTION Black plastic socket with removable contact set.
MAXIMUM LOAD 16A @ 12V with 1.5mm² cable (Total).
 25A @ 12V with 2.5mm² cable (Total).



4901X

7 Pole Plastic Socket

DESCRIPTION Black plastic socket with disconnecting contact for rear fog or rear parking sensors.



4902

7 Pole Plastic Plug

DESCRIPTION Black plastic plug with strain relief.
MAXIMUM LOAD 16A @ 12V with 1.5mm² cable (Total).
 25A @ 12V with 2.5mm² cable (Total).



4909

7 Pole Plastic Socket

DESCRIPTION Simply stores in boot until required. Requires no permanent bumper mounting.
MAXIMUM LOAD 16A @ 12V with 1.5mm² cable (Total).
 25A @ 12V with 2.5mm² cable (Total).



4911

7 Pole Metal Plug

4911-BULK

7 Pole Metal Plug (Pack of 25)

DESCRIPTION Solid metal plug with strain relief.
MAXIMUM LOAD 16A @ 12V with 1.5mm² cable (Total).
 25A @ 12V with 2.5mm² cable (Total).

4912

7 Pole Metal Socket

4912-BULK

7 Pole Metal Socket (Pack of 25)

DESCRIPTION Solid metal socket with removable contact set.
MAXIMUM LOAD 16A @ 12V with 1.5mm² cable (Total).
 25A @ 12V with 2.5mm² cable (Total).



8000

Trailer Plug Holder

DESCRIPTION Minimises potential damage to plug, to suit P/N's 4902 and 4911.
MOUNTING Simple screw mounting on caravan/trailer drawbar or any convenient location.



8005

Trailer Socket Bracket

DESCRIPTION Zinc plated steel. Suits P/N's 4901 and 4912.



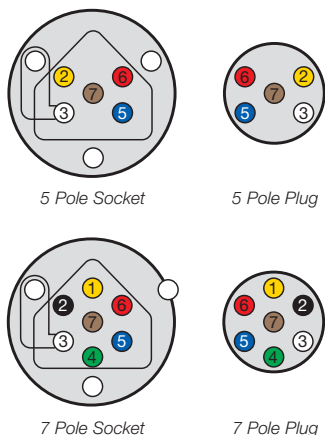
8022

Trailer Socket Bracket

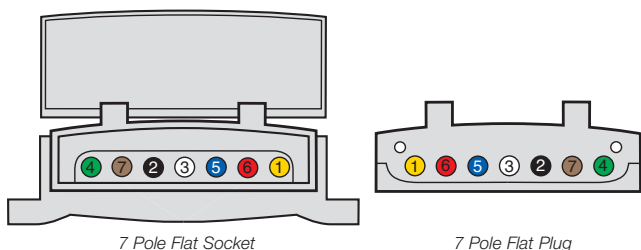
DESCRIPTION Zinc plated steel. Suits P/N's 4901 and 4912.

Trailer Connector Wiring Specifications

Cable Entry View



Front View



5 Pole Connector Wiring Specifications

Terminal No	Connect to
2	Left-hand flasher lamps
3	Earth return
5	Right-hand flasher lamps
6	Stop lamps
7	Rear position, number plate and clearance lamps

7 Pole Connector Wiring Specifications

Terminal No	Connect to
1	Left-hand flasher lamps
2	Reversing lamps
3	Earth return
4	Right-hand flasher lamps
5	Service Brakes (or Auxiliary)
6	Stop Lamps
7	Rear position, number plate and clearance lamps

Note: Where service brakes are not fitted, terminal No.5 may be used for auxiliaries.

4920

7 Pole Flat Socket

DESCRIPTION Impact resistant, UV stabilised plastic spring loaded lid. Nickel plated contacts for excellent electrical performance.

MAXIMUM LOAD 20A @ 12V (Total).
10A @ 24V (Total).



4921

7 Pole Flat Plug

DESCRIPTION Impact resistant, UV stabilised plastic. Nickel plated contacts for excellent electrical performance.

MAXIMUM LOAD 20A @ 12V (Total).
10A @ 24V (Total).



8009

Flat Trailer Plug Holder

8009-BULK

Flat Trailer Plug Holder (Pack of 20)

DESCRIPTION Flat plug holder to suit P/N 4921.





4907

7 Pole Heavy Duty Metal Socket

MAXIMUM LOAD 15A @ 24V with 1.5mm² cable (Total)
20A @ 24V with 2.5mm² cable (Total)



4908

7 Pole Heavy Duty Metal Plug

MAXIMUM LOAD 15A @ 24V with 1.5mm² cable (Total)
20A @ 24V with 2.5mm² cable (Total)



ABS Plugs, Sockets and Contacts

8JB 007 645-021

5/7 Pole ABS Socket

DESCRIPTION Made of black fibreglass reinforced nylon. For cable 9 - 16mm diameter. Socket comes complete with 9 contacts and 2 blanks (as per spare set below).

MAXIMUM LOAD 25A @ 24V (Total)

SPARE PARTS

9MK 726 762-831	Crimp contact set
	5 x 1.5mm ²
	2 x 4.0mm ²
	2 x 6.0mm ²
	2 x Blanks
8PE 863 807 001	Crimping tool (see page 223)



8JA 007 644-041

5/7 Pole ABS Plug

DESCRIPTION Made of black fibreglass reinforced nylon. For cable 11 - 13mm diameter. Plug comes complete with 9 contacts and 2 blanks (as per spare set below).

MAXIMUM LOAD 25A @ 24V (Total)

SPARE PARTS

9MK 726 759-831	Crimp contact set
	5 x 1.5mm ²
	2 x 4.0mm ²
	2 x 6.0mm ²
	2 x Blanks
8PE 863 807 001	Crimping tool (see page 223)

Adaptors

8JA 005 952 001

13 Pole to 7 Pole Adaptor

DESCRIPTION To suit late model vehicles with 13 pole plugs to standard 7 pole, 250mm long.

MAXIMUM LOAD 16A @12V (Total)

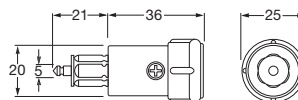


4914

2 Pole Plug

MAXIMUM LOAD 32A @ 12V
16A @ 24V

SOCKET TO SUIT 4915/4916/4917/4918

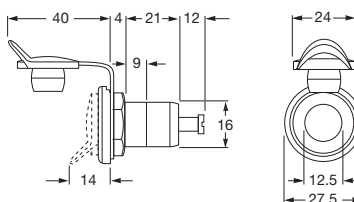


4915

2 Pole Socket with Cover

MOUNTING 19mm diameter opening.

MAXIMUM LOAD 16A @ 12V
8A @ 24V

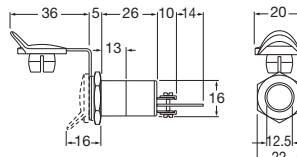


4916

2 Pole Socket with Cover - Insulated Earth

MOUNTING 19mm diameter opening.

MAXIMUM LOAD 16A @ 12V
8A @ 24V

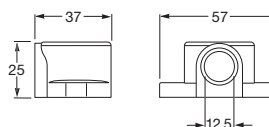


4917

2 Pole Surface Mount Socket

MOUNTING Surface mount.

MAXIMUM LOAD 32A @ 12V
16A @ 24V

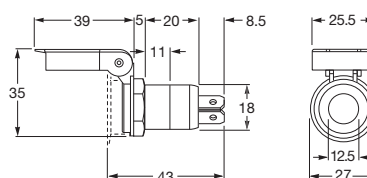


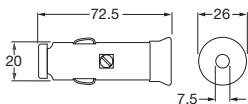
4918

2 Pole Socket with Metal Earth Tab and Cover

MOUNTING 22mm diameter opening.

MAXIMUM LOAD 16A @ 12V
8A @ 24V



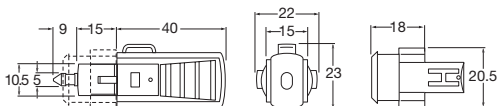


Power Plugs

4950

2 Pole Power Plug

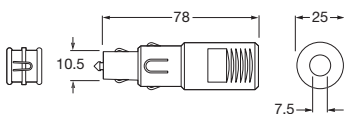
- DESCRIPTION** Suitable for standard cigarette sockets.
- MAXIMUM LOAD** 8A @ 12V
4A @ 24V
- SOCKET TO SUIT** 4943-R



4951

2 Pole Universal Power/DIN Plug

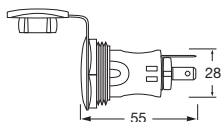
- MAXIMUM LOAD** 8A @ 12V
4A @ 24V
- SOCKETS TO SUIT** 4915/4916/4917/4918/4943-R



4952

2 Pole Fused Power/DIN Plug

- DESCRIPTION** Combination lighter/DIN 2-pole plug with in-built 8A ceramic type fuse suitable for both cigarette lighter and DIN ISO 4165 sockets (standard 2-pole sockets).
- MAXIMUM LOAD** 8A @ 24V
- SOCKETS TO SUIT** 4915/4916/4917/4918/4943-R



Power Socket

4943-R

2 Pole Power Socket

- DESCRIPTION** 2 pole cigarette lighter size power socket with protective cover for connection of a variety of electrical accessories.
- MAXIMUM LOAD** 15A @ 12V

6001 *Disc Horn Low Tone - 12 Volt*

6002 *Disc Horn Low Tone - 24 Volt*

- MOUNTING** Single bolt mounting. 92mm diameter.
- POWER CONSUMPTION** 72W
- FREQUENCY** 335Hz
- SOUND LEVEL** 115 dB @ 2.0m.



6003 *Disc Horn High Tone - 12 Volt*

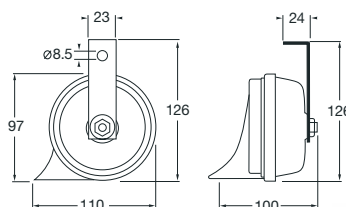
6020 *Disc Horn High Tone - 24 Volt*

- MOUNTING** Single bolt mounting. 92mm diameter.
- POWER CONSUMPTION** 72W
- FREQUENCY** 435Hz
- SOUND LEVEL** 115 dB @ 2.0m.



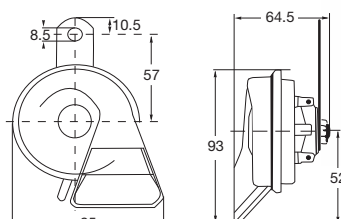
6004 *Scroll Horn (Set of 2) Twin Tone - 12 Volt*

- DESCRIPTION** Includes 12V relay.
- POWER CONSUMPTION** 72W x 2
- VOLTAGE** 12V
- FREQUENCY** High Tone 500Hz
Low Tone 400Hz
- SOUND LEVEL** Combined 110dB @ 2.0m.

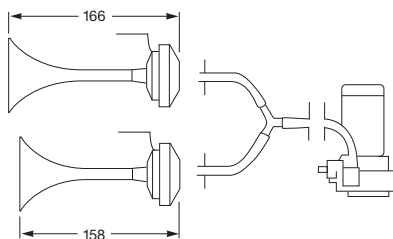


6005 *Scroll Horn (Set of 2) Twin Tone - 12 Volt*

- DESCRIPTION** Galvanised metal housing and plastic trumpet. Safe from corrosion. Can be mounted in even the smallest places.
- MOUNTING** Single bolt mounting.
- POWER CONSUMPTION** 72W x 2
- VOLTAGE** 12V
- FREQUENCY** High Tone 500Hz
Low Tone 400Hz
- SOUND LEVEL** Combined 110 dB @ 2.0m.



ACCESSORIES



6014 Dual Trumpet Air Horn Kit - 12 Volt

6027 Dual Trumpet Air Horn Kit - 24 Volt

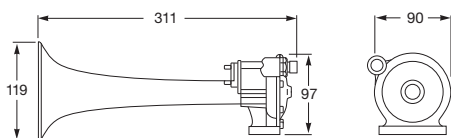
MOUNTING Installation accessories included.

VOLTAGE 20A@ 12V
10A@ 24V

FREQUENCIES 840/795Hz

SOUND LEVEL 117dB

OPERATING PRESSURE 110Kpa (16psi)



6025 Compressed Air Operated Horn - 12 Volt

6026 Compressed Air Operated Horn - 24 Volt

DESCRIPTION Ideal for trucks and buses. Grey shock-proof and corrosion resistant trumpet. This horn is designed to operate directly from the truck's air supply via the existing horn-button or separate switch.

POWER CONSUMPTION 36W

FREQUENCIES 400Hz

SOUND LEVEL 124dB (at 2.0 metres)

OPERATING PRESSURE 620-860Pa (90-125psi)

SIZE Length: 33mm

Note Air Tube: 10mm internal diameter.



6039 Scroll Horn Low Tone - 24 Volt

MOUNTING Single bolt mounting.

VOLTAGE 24V

POWER CONSUMPTION 72W

FREQUENCY 400Hz

SOUND LEVEL 112dB @ 2m

6040 Scroll Horn High Tone - 24 Volt

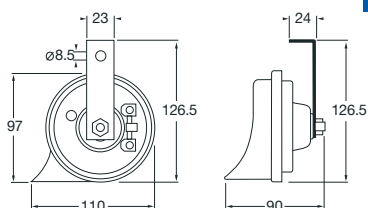
MOUNTING Single bolt mounting.

VOLTAGE 24V

POWER CONSUMPTION 72W

FREQUENCY 500Hz

SOUND LEVEL 112dB @ 2m



6047

Reversing Alarms - 82 to 107dB Automatic

DESCRIPTION Reactor heavy duty reversing and warning alarm automatically adjusts to changing noise environments. State-of-the-art, solid-state electronics self-adjust to a minimum of 5dB above surrounding noise levels, thus reducing irritation, complaints and hearing impairment. Reactor alarms feature integral universal mounting brackets and high impact ABS plastic resin housing and are totally environmentally sealed in epoxy to guard against moisture, dirt and vibration.

MOUNTING Universal mounting brackets.

VOLTAGE 9-56V

CURRENT DRAW Less than 0.25A

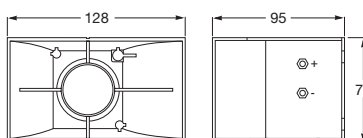
FREQUENCY 80 signals per minute

SOUND LEVEL 82 to 107dB @ 1.2m

TEMPERATURE -40°C to 77°C

PROTECTION IP 55 (Protection against dust and water jets)

COMPLIANCE SAE J994



6048

Reversing Alarms - 87 to 112dB Automatic

DESCRIPTION Reactor heavy duty reversing and warning alarm automatically adjusts to changing noise environments. State-of-the-art, solid-state electronics self-adjust to a minimum of 5dB above surrounding noise levels, thus reducing irritation, complaints and hearing impairment. Reactor alarms feature integral universal mounting brackets and high impact ABS plastic resin housing and are totally environmentally sealed in epoxy to guard against moisture, dirt and vibration.

MOUNTING Universal mounting brackets.

VOLTAGE 9-36V

CURRENT DRAW Less than 0.50A

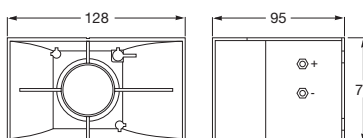
FREQUENCY 80 signals per minute

SOUND LEVEL 87 to 112dB @ 1.2m

TEMPERATURE -40°C to 77°C

PROTECTION IP 55 (Protection against dust and water jets)

COMPLIANCE SAE J994



6049

Reversing Alarms - 107 or 112dB Manual

DESCRIPTION This Reactor heavy duty reversing and warning alarm features manual selection of required sound level to suit surrounding noise environments. Reactor alarms feature integral universal mounting brackets and high impact ABS plastic resin housing and are totally environmentally sealed in epoxy to guard against moisture, dirt and vibration.

MOUNTING Universal mounting brackets.

VOLTAGE 9-36V

CURRENT DRAW Less than 0.8A

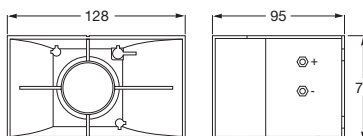
FREQUENCY 80 signals per minute

SOUND LEVEL 107 or 112dB @ 1.2m

TEMPERATURE -40°C to 77°C

PROTECTION IP 55 (Protection against dust and water jets)

COMPLIANCE SAE J994



Note Reactor alarms comply with SAE J994 requirements and OSHA regulations.



6021

Warning Alarm - 12 Volt

6022

Warning Alarm - 24 Volt

DESCRIPTION Piercing continuous sound. Suitable for a variety of applications e.g. headlamp, oil, handbrake, indicator, temperature, door close/open, brake fluid, etc. 40mm diameter.

POWER CONSUMPTION 6W
SOUND LEVEL 85dB



6023

Reversing Alarm - 12-36 Volts

DESCRIPTION Intermittent reversing buzzer. Easily fitted to any car or truck's reversing lamp wiring system or wire to a switch on your dashboard. 48mm diameter.

VOLTAGE 12-36V, current consumption less than 900mA.
SOUND LEVEL 85dB



6041

Activating Switch

DESCRIPTION Single direction. Off-On switch. Suits all reversing alarms and buzzers.
MOUNTING Adjacent to the gear shift lever or linkage.
PROTECTION IP 55 (Protection against dust and water jets)



6042

Reversing Alarm, 87dB - 12-24 Volts

6043

Reversing Alarm Plus, 97dB - 12-48 Volts

6044

Reversing Alarm Plus, 112dB - 12-48 Volts

DESCRIPTION The Evacuator Plus heavy duty reversing and warning alarm features a lightweight piezoelectric output circuit. This solid state design technology with no point-to-point wiring replaces the heavy magnetic coils and speakers found in conventional alarms.

The reduced weight of just 129 grams makes the Evacuator Plus virtually immune to vibration damage. Unique nickel plated conductive terminal inserts, which provide power to the alarm, are hermetically sealed, giving superior water resistant performance.

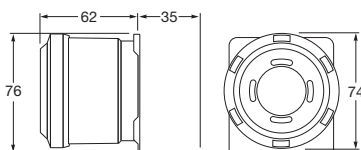
The housing is constructed of high impact ABS plastic resin and is environmentally sealed against moisture, dust and corrosion. Evacuator Plus reversing and warning alarms are steam cleanable.

MOUNTING Universal mounting comes complete with heavy-gauge plated steel mounting bracket. Can be installed on positive and negative ground vehicles.

CURRENT DRAW Less than 0.20A

FREQUENCY 80 signals per minute +/- 20

TEMPERATURE Operating range -40°C to 74°C



6008	<i>Reversing Alarm, 90dB - 12-24 Volts</i>
6009	<i>Reversing Alarm, 97dB - 12-24 Volts</i>
6010	<i>Reversing Alarm, 107dB - 12-24 Volts</i>
6011	<i>Reversing Alarm, 97dB - 12-48 Volts</i>



9.6008.06

DESCRIPTION Heavy-duty reversing alarm with integral AMP connection and fixed sound pressure levels between 90 and 107dB @ 1.2 metres. Epoxy encapsulated circuit boards offer protection against humidity, dirt and vibration. Manufactured in accordance with SAE J994 and SAE J1211 standards.

MOUNTING Integrated universal mounting bracket for upright, pendant or surface mounting.

VOLTAGE 12-24V
12-48V (6011)

CURRENT DRAW 6011 0.1A
6008/6009 0.2A
6010 0.3A

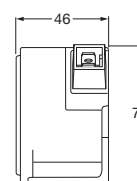
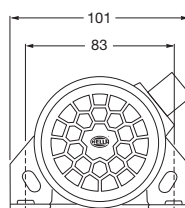
FREQUENCY 60 signals per minute (± 20%).

SOUND LEVEL 6008 90 ± 4dB @ 1.2m
6009 97 ± 4dB @ 1.2m
6010 107 ± 4dB @ 1.2m
6011 97 ± 4dB @ 1.2m

TEMPERATURE Operating range -40°C to 85°C.

PROTECTION IP 66 (Protection against high pressure washing)

SPARE PART 9.6008.06 Plug and lead



6012	<i>Reversing Alarm/Signal Horn, 102dB - 12-24 Volts</i>
-------------	---



DESCRIPTION Heavy-duty reversing alarm with integrated, dual tone signal horn. Epoxy encapsulated circuit boards offer protection against humidity, dirt and vibration. Manufactured in accordance with SAE J994 and SAE J1211 standards.

MOUNTING Integrated universal mounting bracket for upright, pendant or surface mounting.

VOLTAGE 12-24V

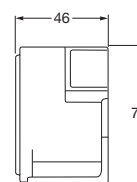
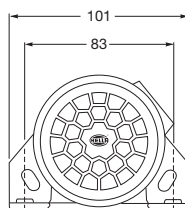
CURRENT DRAW 0.3A

FREQUENCY 60 signals per minute (± 20%)

SOUND LEVEL 102 ± 4dB @ 1.2m

TEMPERATURE Operating range -40°C to 85°C

PROTECTION IP 66 (Protection against high pressure washing)



6013	<i>Reversing Alarm, 82-102dB - 12-24 Volts</i>
-------------	--



DESCRIPTION Heavy-duty reversing alarm with integral AMP connection. Automatically adjusts sound pressure level to changing noise environments. Solid state electronics, self-adjusting to the minimum of 5dB above surrounding noise levels effectively reducing irritation. Epoxy encapsulated circuit boards offer protection against humidity, dirt and vibration. Manufactured in accordance with SAE J994 and SAE J1211 standards.

MOUNTING Integrated universal mounting bracket for upright, pendant or surface mounting.

VOLTAGE 12-24V

CURRENT DRAW 0.4A

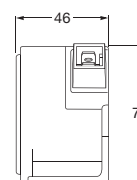
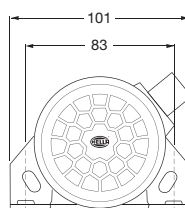
FREQUENCY 60 signals per minute (± 20%)

SOUND LEVEL 82 - 102 ± 4dB @ 1.2 metres

TEMPERATURE Operating range -40°C to 85°C

PROTECTION IP 66 (Protection against high pressure washing)

SPARE PART 9.6008.06 Plug and lead



9.6008.06

ACCESSORIES



6100

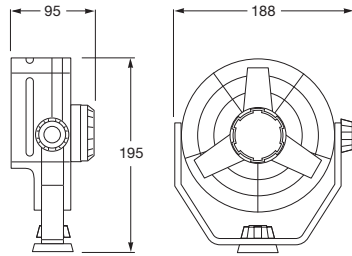
Turbo Fan - 12 Volt

6101

Turbo Fan - 24 Volt

DESCRIPTION Black shock proof housing. May be turned and locked in any position. Air flow can be regulated by 2 speed switch. Soft plastic fan blades, shielded by sturdy protective grille for added safety. Includes 1.55m of connecting cable.

POWER CONSUMPTION 6.5W



Circuit Tester

7013

Circuit Tester

DESCRIPTION For quick fault tracing in vehicle electrical systems. Sturdy metal construction with screw-off cap and testing needle.

SUITS 6, 12 and 24V applications only.

BULB TO SUIT M243

8271 Crimping Tool - Insulated Terminals

DESCRIPTION Especially designed for the handyman and hobbyist, a useful crimping tool that cuts cable, strips cable insulation and crimps all popular insulated terminals.



8272 Crimping Tool - Insulated Terminals

DESCRIPTION Spring return hand grips. Cuts and strips insulation from cable measuring 2.5-6mm in diameter (0.75 - 6mm²). Crimps all popular insulated and non-insulated terminals. Cuts bolts with metric threads M2.6, M3, M3.5, M4, M5.



8273 Crimping Tool - Insulated Terminals

DESCRIPTION Adjustable ratchet mechanism and spring release ensures a perfect crimp every time for insulated terminals.

SPARE PART 9.8273.01 Replaceable jaws for non-insulated terminals



8275 Crimping Tool - DT Terminals

DESCRIPTION Specially designed crimping tool with multiple jaws for an even crimp of DT terminals.

Note See page 224 for DT connectors.



8298 Crimping Tool - Super Seal Terminals

DESCRIPTION Crimping tool designed for use with Super Seal connector terminals.

Note See page 226 for super seal connectors.



8PE 863 807 001 Crimping Tool - ABS Terminals

DESCRIPTION Crimping tool designed for use with ABS connectors.

Note See page 214 for ABS plugs, sockets and connectors.





4960

2 Pole Plug and Socket

DESCRIPTION

Environmentally sealed connectors. Rated -55°C to 125°C. Supplied complete with 4 solid copper crimp contacts and 2 locking wedges. Supplied with large I.D. contacts.

MAXIMUM LOAD

13A - all contacts

SPARE PARTS

9.4960.01	Small I.D. female contact to suit plug
9.4960.02	Small I.D. male contact to suit socket
9.4960.03	Large I.D. female contact to suit plug
9.4960.04	Large I.D. male contact to suit socket
9.4960.05	Sealing plug

Note: Contacts are removable
Small I.D. = 1.6mm diameter
Large I.D. = 1.9mm diameter

4960FM

2 Pole Socket (Pack of 10)

4960MF

2 Pole Plug (Pack of 10)

DESCRIPTION

Pack of 10 plugs or sockets. 2 Pole connectors and contacts to suit.



4961

3 Pole Plug and Socket

DESCRIPTION

Environmentally sealed connectors. Rated -55°C to 125°C. Supplied complete with 6 solid copper crimp contacts and 2 locking wedges. Supplied with large I.D. contacts.

MAXIMUM LOAD

13A - all contacts

SPARE PARTS

9.4960.01	Small I.D. female contact to suit plug
9.4960.02	Small I.D. male contact to suit socket
9.4960.03	Large I.D. female contact to suit plug
9.4960.04	Large I.D. male contact to suit socket
9.4960.05	Sealing plug.

Note: Contacts are removable
Small I.D. = 1.6mm diameter
Large I.D. = 1.9mm diameter



4962

4 Pole Plug and Socket

DESCRIPTION

Environmentally sealed connectors. Rated -55°C to 125°C. Supplied complete with 8 solid copper crimp contacts and 2 locking wedges. Supplied with large I.D. contacts.

MAXIMUM LOAD

13A - all contacts

SPARE PARTS

9.4960.01	Small I.D. female contact to suit plug
9.4960.02	Small I.D. male contact to suit socket
9.4960.03	Large I.D. female contact to suit plug
9.4960.04	Large I.D. male contact to suit socket
9.4960.05	Sealing plug

Note: Contacts are removable
Small I.D. = 1.6mm diameter
Large I.D. = 1.9mm diameter

4963 6 Pole Plug and Socket

DESCRIPTION Environmentally sealed connectors. Rated -55°C to 125°C. Supplied complete with 12 solid copper crimp contacts and 2 locking wedges. Supplied with large I.D. contacts.

MAXIMUM LOAD 13A - all contacts

SPARE PARTS	9.4960.01	Small I.D. female contact to suit plug
	9.4960.02	Small I.D. male contact to suit socket
	9.4960.03	Large I.D. female contact to suit plug
	9.4960.04	Large I.D. male contact to suit socket
	9.4960.05	Sealing plug.

*Note: Contacts are removable
Small I.D. = 1.6mm diameter
Large I.D. = 1.9mm diameter*



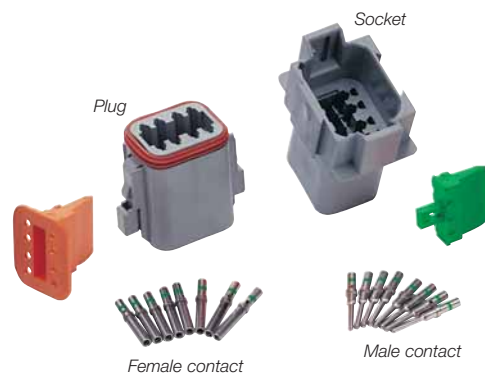
4964 8 Pole Plug and Socket

DESCRIPTION Environmentally sealed connectors. Rated -55°C to 125°C. Supplied complete with 16 solid copper crimp contacts and 2 locking wedges. Supplied with large I.D. contacts.

MAXIMUM LOAD 13A - all contacts

SPARE PARTS	9.4960.01	Small I.D. female contact to suit plug
	9.4960.02	Small I.D. male contact to suit socket
	9.4960.03	Large I.D. female contact to suit plug
	9.4960.04	Large I.D. male contact to suit socket
	9.4960.05	Sealing plug

*Note: Contacts are removable
Small I.D. = 1.6mm diameter
Large I.D. = 1.9mm diameter*



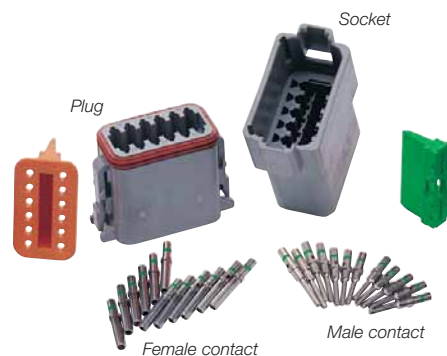
4965 12 Pole Plug and Socket

DESCRIPTION Environmentally sealed connectors. Rated -55°C to 125°C. Supplied complete with 24 solid copper crimp contacts and 2 locking wedges. Supplied with large I.D. contacts.

MAXIMUM LOAD 13A - all contacts

SPARE PARTS	9.4960.01	Small I.D. female contact to suit plug
	9.4960.02	Small I.D. male contact to suit socket
	9.4960.03	Large I.D. female contact to suit plug
	9.4960.04	Large I.D. male contact to suit socket
	9.4960.05	Sealing plug

*Note: Contacts are removable
Small I.D. = 1.6mm diameter
Large I.D. = 1.9mm diameter*



A Proper Crimp:

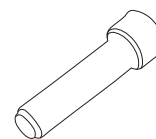


Conductor strands must be visible through the inspection hole.

Crimp centred between the inspection hole and crimp barrel end.

Visual Inspection Checklist

- NO damaged wire strands.
- NO missing wire strands.
- ALL strands entered into contact barrel.



Sealing plug
9.4960.05



Super Seal Connectors

DESCRIPTION 'Super seal' connector housings were developed to satisfy the constantly increasing requirements for safety and reliability in the field of electrical connections. The connectors can be connected to existing components and used with the equipment presently in use in the automotive industry (sensors, oil pressure sensors, water temperature monitoring circuits, etc.).

SPECIAL FEATURES

- IP 67
- Robust and reliable contact.
- Prefabricated secondary lock ensures that the terminal is plugged into the housing correctly and prevents slipping out of the connector.

4981-P 1 Pole Plug - (Pack of 4)

4981-S 1 Pole Socket - (Pack of 4)

4982 2 Pole Plug and Socket Kit

4982-P 2 Pole Plug - (Pack of 4)

4982-S 2 Pole Socket - (Pack of 4)

SPARE PART 9.4982.05 Rubber sealing boot - cable support

4983 3 Pin Plug and Socket Kit

4983-P 3 Pole Plug - (Pack of 3)

4983-S 3 Pole Socket - (Pack of 3)

SPARE PART 9.4983.05 Rubber sealing boot - cable support

4984 4 Pole Plug and Socket Kit

4984-P 4 Pole Plug - (Pack of 3)

4984-S 4 Pole Socket - (Pack of 3)

4985-P 5 Pole Plug - (Pack of 2)

4985-S 5 Pole Socket - (Pack of 2)

4986-P 6 Pole Plug - (Pack of 2)

4986-S 6 Pole Socket - (Pack of 2)

Note: For 'P' and 'S' versions only the bare connector is supplied. Select appropriate seals and terminals to suit. Plug and socket kits come complete with terminals and seals.

4980

Connector Kit

CONTENTS		
5 of each connector, plug and socket		
100	9.4980.02	Socket terminals
100	9.4980.04	Plug terminals
100	9.4980.06	Yellow seals
100	9.4980.09	Red cavity plugs



Terminals for Plug - (Pack of 50)

9.4980.01	Terminal to suit cable 0.35 – 0.50mm ²
9.4980.02	Terminal to suit cable 0.75 – 1.50mm ²

Terminals for Socket - (Pack of 50)

9.4980.03	Terminal to suit cable 0.35 – 0.50mm ²
9.4980.04	Terminal to suit cable 0.75 – 1.50mm ²

Seals for Plug/Socket - (Pack of 50)

9.4980.05	Green seal to suit cable insulation 1.4-1.7mm diameter
9.4980.06	Yellow seal to suit cable insulation 1.8-2.4mm diameter
9.4980.07	Red seal to suit cable insulation 2.5-3.3mm diameter
9.4980.09	Red cavity plug (no hole)

Rubber Sealing Boot - Cable support

9.4982.05	Rubber sealing boot to suit 2 pin connector
9.4983.05	Rubber sealing boot to suit 3 pin connector

9.4980.20 Super Seal Contact Extraction Tool

9.4980.21 Super Seal Secondary Lock Tool

DESCRIPTION Extraction tools for the popular Super Seal range of connectors, to assist in disassembly if required.



8298 Super Seal Crimp Pliers (Wire and Seal)

DESCRIPTION Crimping tool designed for use with Super Seal connector terminals.



Super Seal Specifications

SEALS Made from silicon rubber. Seals shaped for easy insertion into connector. The hoop rings in the crimping area ensure excellent pull relief for the terminals. Suitable with insulation 1.5-3.3mm diameter.

CONNECTOR Housing and secondary lock - polyamide 6.6 glass filled
RESISTANT TO Ozone, salts (CaCl₂-NaCl), petrol, diesel fuel, anti-freeze, ATM and engine oil.

TEMPERATURE RANGE -40°C to 125°C


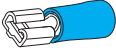
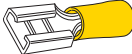

INSULATION RESISTANCE Minimum 200MΩ


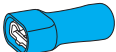
TERMINALS Male - Brass, tinned
 Female - Phosphor bronze, tinned

CURRENT RATING 14A maximum




INSERT FORCE Maximum 8N


CONTACT RESISTANCE Maximum 3MΩ

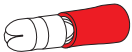
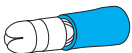
	<i>Blister Pack Part No.</i>	<i>Qty per Pack</i>	<i>Bulk Pack Part No.</i>	<i>Qty per Pack</i>	<i>Size</i>	<i>Cable</i>
Push-On Female Terminals						
	8200	20	8500	100	6.3mm	2.5 to 3mm cable 0.75 to 1.13mm ² cable
	8201	20	8501	100	6.3mm	4mm cable 1.84mm ² cable
	8202	15	8502	100	6.3mm	5 to 6mm cable 2.9 to 4.59mm ² cable
	8203	12	8503	100	9.5mm	

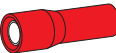
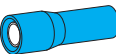
Fully Insulated Female Terminals						
	8204	12	8504	100	6.3mm	2.5 to 3mm cable 0.75 to 1.13mm ² cable
	8205	12	8505	100	6.3mm	4mm cable 1.84mm ² cable

Push-On 2-Way Male and Female Terminals						
	8210	15	8510	100	6.3mm	2.5 to 3mm cable 0.75 to 1.13mm ² cable
	8211	12	8511	100	6.3mm	4mm cable 1.84mm ² cable
	8212	15	8512	100	6.3mm	

Blade Male Terminals						
	8213	15	8513	100	6.3mm	2.5 to 3mm cable 0.75 to 1.13mm ² cable
	8214	12	8514	100	6.3mm	4mm cable 1.84mm ² cable
	8215	10	8515	100	6.3mm	5 to 6mm cable 2.9 to 4.59mm ² cable

Double Blade Male Connector						
	8216	12	8516	50	6.3mm	

Bullet Single Male Connectors						
	8220	12	8520	100		2.5 to 3mm cable 0.75 to 1.13mm ² cable
	8221	14	8521	100		4mm cable 1.84mm ² cable

Bullet Single Female Connectors						
	8222	12	8522	100		2.5 to 3mm cable 0.75 to 1.13mm ² cable
	8223	14	8523	100		4mm cable 1.84mm ² cable

	Blister Pack Part No.	Qty per Pack	Bulk Pack Part No.	Qty per Pack	Size	Cable
Cable Connectors						
	8224	13	8524	100	6.3mm	Suited for brass bullet terminals.
	8230	15	8530	100	6.3mm	2.5 to 3mm cable 0.75 to 1.13mm ² cable
	8231	15	8531	100	6.3mm	4mm cable 1.84mm ² cable
	8232	10	8532	100	9.5mm	5 to 6mm cable 2.9 to 4.59mm ² cable

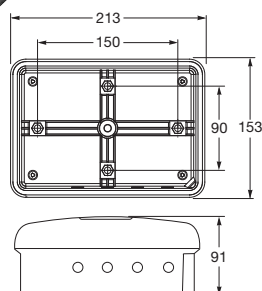
Quick Connect Cable Connectors						
	8235	15	8535	50		
<p><i>Features:</i> With the use of pliers, connects splices and insulates 0.75 to 1.13 mm² (2.5 to 3 mm) cable. Manufactured by 3M Company U.S.A.</p>						

Eye Terminals						
	8240	25	8540	100	4.3mm	2.5 to 3mm cable 0.75 to 1.13mm ² cable
	8241	20	8541	100	5.0mm	
	8242	15	8542	100	6.3mm	
	8243	20	8543	100	5.0mm	4mm cable 1.84mm ² cable
	8244	20	8544	100	6.3mm	
	8245	15	8545	100	8.4mm	
	8246	12	8546	100	6.3mm	5 to 6mm cable 2.9 to 4.59mm ² cable
	8247	12	8547	100	8.4mm	
	8248	10	8548	100	9.5mm	
	8249	10	8549	100	5.0mm	

Spade Terminals						
	8260	20	8560	100	4.3mm	2.5 to 3mm cable 0.75 to 1.13mm ² cable
	8261	15	8561	100	5.0mm	
	8262	20	8562	100	4.3mm	4mm cable 1.84mm ² cable
	8263	12	8563	100	5.0mm	

Non-Insulated Brass Lucar Terminal - To Suit 4973						
			8573	100	6.3mm	1.84mm ²

ACCESSORIES



8280

Insulated Terminal Assortment

CONTAINS A total quantity of 16 popular Hella connectors/terminals.

8281

Insulated Terminal Assortment

CONTAINS A total quantity of 31 popular Hella connectors/terminals.

8282

Insulated Terminal Kit

CONTAINS This assortment containing 173 Hella connectors/terminals is designed to meet the requirements of the automotive industry.

A quantity of 12 complete Packs

Part No.	Description	Quantity
8200	Push-on female terminal	18
8201	Push-on female terminal	14
8202	Push-on female terminal	12
8203	Push-on female terminal	10
8210	Push-on 2 way male and female terminal	10
8211	Push-on 2 way male and female terminal	10
8230	Cable connector	15
8231	Cable connector	15
8232	Cable connector	12
8241	Eye terminal	25
8244	Eye terminal	20
8247	Eye terminal	12

8284

Insulated Terminal and Connector Kit

DESCRIPTION This assortment contains 16 x 50 types of Hella connectors/terminals designed to meet the requirements of the automotive industry.

CONTAINS 16 x 50 types of Hella connectors/terminals.

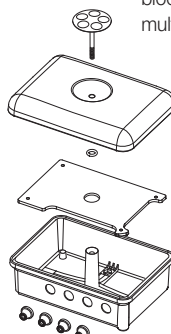
8200 x 50	8223 x 50
8201 x 50	8230 x 50
8204 x 50	8231 x 50
8205 x 50	8235 x 50
8213 x 50	8241 x 50
8214 x 50	8244 x 50
8220 x 50	8247 x 50
8221 x 50	8272 x 1
8222 x 50	

Junction Box

2755

Junction Box

DESCRIPTION Heavy duty nylon junction box. Box can be opened without tools via a single stainless steel bolt. Large sealing gasket withstands high pressure water blasting. Internal mounting plate for fitment of connector blocks and/or relays by self-tapping screws. Large size allows for multiple connections.



8300

Self Bonding Rubber Tape, Black - 19mm x 5m

DESCRIPTION Self bonding adhesive tape. Supple, waterproof, permanently resilient and high stretch. This self bonding adhesive tape is used for assembling cable sleeves and repairing damaged cable and leads and is also suitable for sealing hoses. For optimum insulation and self bonding, a minimum 50% overlap and tensile stretch of at least 50% is recommended.

TAPE THICKNESS 1.0 +/- 0.2mm
TEAR RESISTANCE >20.0 N/cm
ELONGATION AT BREAK >600%
TEMPERATURE RANGE -40°C to 105°C



8306

Insulation Tape, Black - 18mm x 10m

8312

Insulation Tape, Black - 18mm x 20m

DESCRIPTION Black insulation tape. Made from lead free PVC. Suitable for fine wire, cables and applications requiring non-corrosive tape.

TAPE THICKNESS 0.18mm
ELONGATION AT BREAK 200%
TEMPERATURE RANGE -40°C to 105°C



8320

Duct Tape, Black - 48mm x 30m

DESCRIPTION Premium quality plastic coated rayon fabric backing, with a high tack aggressive rubber based adhesive on one side.

TEMPERATURE RANGE -40°C to 105°C



8322

Flame Retardant PVC Trade Insulation Tape, Black - 19mm x 20m

DESCRIPTION Flame retardant PVC electrical insulation tape, complying with British standards BS3924 31/90Tp, BS3J10, BS3887 (1985 Part 2 Category 1 and IEC 454-3-1.

TEAR RESISTANCE >26.0 N/cm
INSULATION RESISTANCE 107MΩ
TEMPERATURE RANGE -40°C to 105°C



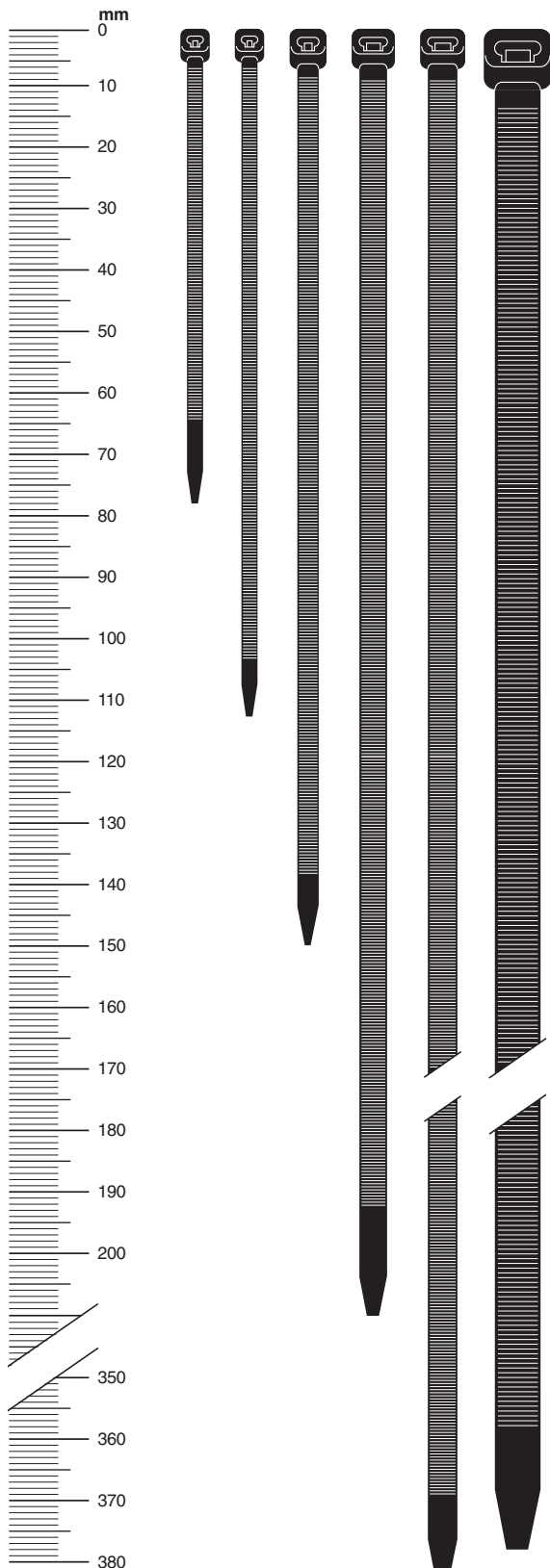


Diagram not to scale

Clear Cable Ties

	Quantity 100 per Pack	Length mm	Width mm
	8341	78	2.0
	8342	103	2.0
	8343	150	3.0
	8344	200	4.0
	8345	380	4.0
	8346	380	7.0

Black UV Resistant Cable Ties

Quantity 10 per Pack	Quantity 100 per Pack	Length mm	Width mm
8331UV	8341UV	80	2.0
8332UV	8342UV	100	2.0
8333UV	8343UV	150	3.0
8334UV	8344UV	210	4.0
8335UV	8345UV	382	4.8
8336UV	8346UV	382	7.6

DESCRIPTION 100% 6/6 nylon cable ties.

FEATURES Very flexible locking latch. Bell-mouthed-head allows easier threading than previous ties. Strongest possible locking power without damaging the serrations of the tie. Quick fastening and simple locking mechanism. Black ties are UV resistant.

8455

Cable Connectors

DESCRIPTION Set of 12 brass terminals. Flexible plastic.
SUITS Cables up to 2.5mm (0.75mm²).



8452

Cable Connectors

DESCRIPTION Set of 12 brass terminals. Flexible plastic.
SUITS Cables up to 3mm (1.13mm²).



8453

Cable Connectors

DESCRIPTION Set of 12 brass terminals. Flexible plastic.
SUITS Cables up to 5mm (2.90mm²).



8454

Cable Connectors

DESCRIPTION Set of 12 brass terminals. Flexible plastic.
SUITS Cables up to 6mm (4.59mm²).



Fuse holders

8701

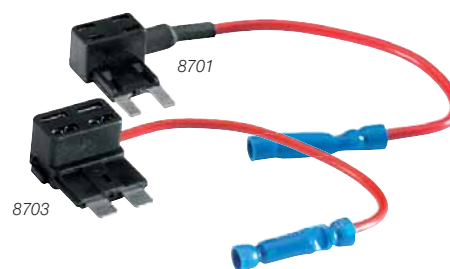
Auxiliary Mini Blade Fuse Holder

8703

Auxiliary Blade Fuse Holder

DESCRIPTION Add on fuse holder. Fuse holder allows you to piggy back off the original fuse with an additional holder and separate fused circuit. Comes complete with 4 fuses (3A, 5A, 7.5A and 10A).

SUITS Mobile Phones
 Stereos
 Amplifiers
 Navigation systems
 Fridges



8704

Fuse Holder - Single Blade Fuse

DESCRIPTION Single blade fuse holder. Several holders may be joined together or mated with P/N 4973 (Relay Holder). Comes complete with 2 terminals for cable up to 2.5mm².



8707

Fuse Holder - Maxi Blade Fuse

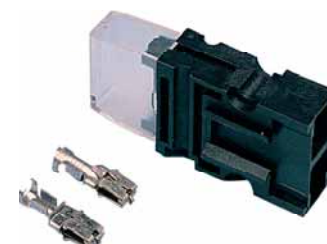
DESCRIPTION Single maxi blade fuse holder. Splash-proof with plastic cover. For loads up to 60A. Complete with 2 sets of terminals, set one for 2.5-6mm² and set two for 5-10mm².



8718

Blade Fuse Box Holder - 1 Fuse

DESCRIPTION 30 amps maximum. May be interlocked face to face or end to end. Complete with transparent dust cover lid and snap-in terminals. Suitable for cable up to 5mm (Conductor cross sectional area up to 2.90mm²).

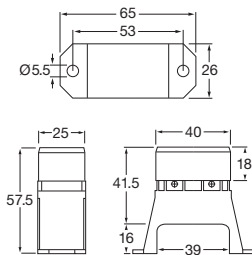


8719

In-Line Blade Fuse Holder - 1 Fuse

DESCRIPTION 20 amps maximum. Complete with 15A blade fuse. Quick connect type, manufactured by 3M U.S.A. Suitable for cable up to 4mm (Conductor cross sectional area up to 1.84mm²).



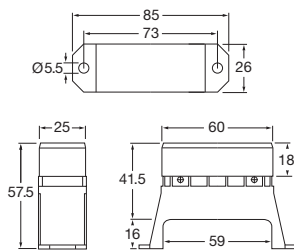


Blade Fuse Boxes

8720 *Blade Fuse Box - 4 Fuses*

8720-S *Blade Fuse Box Side Connectors - 4 Fuses*

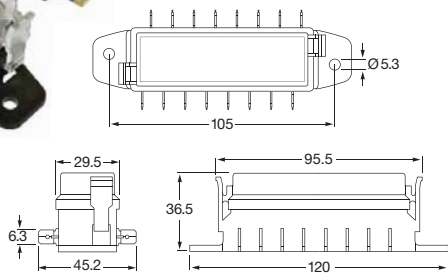
DESCRIPTION Black plastic housing with transparent snap-fit lid. Flat plug connections.
NUMBER OF FUSES 4
FUSE TYPE 2 x 10A
 2 x 15A



8721 *Blade Fuse Box - 6 Fuses*

8721-S *Blade Fuse Box Side Connectors - 6 Fuses*

DESCRIPTION Black plastic housing with transparent snap-fit lid. Flat plug connections.
NUMBER OF FUSES 6
FUSE TYPE 3 x 10A
 3 x 15A



8722 *Blade Fuse Box - 8 Fuses*

8722-S *Blade Fuse Box Side Connectors - 8 Fuses*

DESCRIPTION Black plastic housing with transparent snap-fit lid. Flat plug connections.
NUMBER OF FUSES 8
FUSE TYPE 4 x 10A
 4 x 15A



8723 *Blade Fuse Box - 12 Fuses*

DESCRIPTION Black plastic housing with transparent snap fit lid incorporating sealing gasket. Provision for storing 4 spare fuses. Special sealing gland for cable entry.
NUMBER OF FUSES 12
FUSE TYPE 4 x 10A
 4 x 15A
 2 x 20A
 2 x 25A

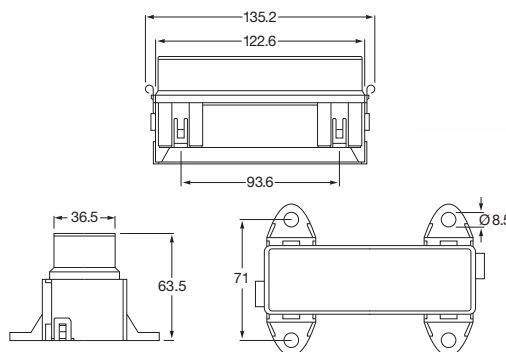
8724

Blade Fuse Box - 16 Fuses

DESCRIPTION 16-way fuse box featuring black plastic housing with secondary locks, transparent cover and sealing gasket. Supplied with mounting brackets (male and female).

NUMBER OF FUSES 16

FUSE TYPE
 6 x 10A
 6 x 15A
 2 x 20A
 2 x 25A



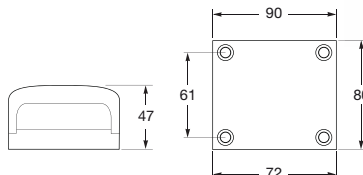
8725

Blade Fuse Box - 6 Fuses

DESCRIPTION Black plastic housing with transparent snap-fit lid and 6.3mm male blade terminals. 6mm diameter stud input. Complete with 2 spare fuse holders and label set.

NUMBER OF FUSES 6

FUSE TYPE
 3 x 10A
 3 x 15A



Circuit Breakers

8736	Heavy Duty Circuit Breaker, Purple - 3A
8737	Heavy Duty Circuit Breaker, Green - 6A
8738	Heavy Duty Circuit Breaker, Red - 10A
8739	Heavy Duty Circuit Breaker, White - 15A
8740	Heavy Duty Circuit Breaker, Yellow - 20A
8741	Heavy Duty Circuit Breaker, Blue - 25A

DESCRIPTION Compact single pole, heavy duty thermal circuit breakers with push-to-reset mechanism and separate (colour coded) manual release for extra low voltage wiring systems on all types of vehicles and marine craft. Fitted with blade terminals for plug-in mounting and retaining clips and ribs for increased pull-out force and vibration resistance. Ideal replacement for blade fuses in heavy duty applications.

VOLTAGE Max 28V (Min. 10V)





<i>Blade Fuses - 10 Per Pack</i>	
8771	<i>Blade Fuse, Tan - 5A</i>
8772	<i>Blade Fuse, Brown - 7.5A</i>
8773	<i>Blade Fuse, Red - 10A</i>
8774	<i>Blade Fuse, Blue - 15A</i>
8775	<i>Blade Fuse, Yellow - 20A</i>
8776	<i>Blade Fuse, White - 25A</i>
8777	<i>Blade Fuse, Green - 30A</i>

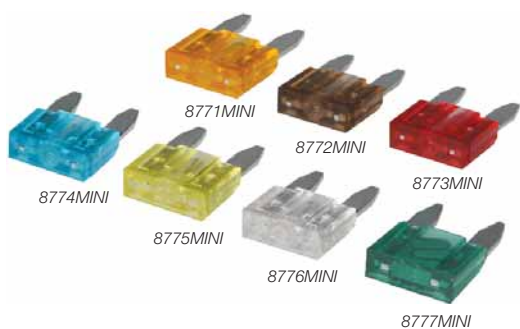
Fuse Assortment - 10 Per Pack

8779	<i>Motorist Fuse Assortment</i>
-------------	---------------------------------

DESCRIPTION	
	10 popular blade fuses - ideal for the glove box.
Contains:	1 x 7.5A
	2 x 10A
	2 x 15A
	2 x 20A
	2 x 25A
	1 x 30A

Mini Blade Fuses - 10 Per Pack

8771MINI	<i>Mini Blade Fuses, Tan - 5A</i>
8772MINI	<i>Mini Blade Fuses, Brown - 7.5A</i>
8773MINI	<i>Mini Blade Fuses, Red - 10A</i>
8774MINI	<i>Mini Blade Fuses, Blue - 15A</i>
8775MINI	<i>Mini Blade Fuses, Yellow - 20A</i>
8776MINI	<i>Mini Blade Fuses, White - 25A</i>
8777MINI	<i>Mini Blade Fuses, Green - 30A</i>



Low Profile Mini Blade Fuses - 10 per Pack	
8771LP	Low Profile Blade Fuse, Tan - 5A
8772LP	Low Profile Blade Fuse, Brown - 7.5A
8773LP	Low Profile Blade Fuse, Red - 10A
8774LP	Low Profile Blade Fuse, Blue - 15A
8775LP	Low Profile Blade Fuse, Yellow - 20A
8776LP	Low Profile Blade Fuse, White - 25A
8777LP	Low Profile Blade Fuse, Green - 30A



Maxi Blade Fuses - 1 per Pack	
8790	Maxi Blade Fuse, Yellow - 20A
8791	Maxi Blade Fuse, Green - 30A
8792	Maxi Blade Fuse, Orange - 40A
8793	Maxi Blade Fuse, Red - 50A
8794	Maxi Blade Fuse, Blue - 60A
8796	Maxi Blade Fuse, Brown - 70A
8795	Maxi Blade Fuse, White - 80A

